

June 22, 2012

Announcements



Yale Cancer Center Answers Ranks #1

Our weekly radio show, *Yale Cancer Center Answers*, recently moved up to the number one listed podcast for

cancer information in the world on iTunes! I would like to thank Drs. Francine Foss and Lynn Wilson for taking time from their busy schedules to host the show. The program topics and guests are an excellent reflection of the exciting clinical and research initiatives at Smilow Cancer Hospital and Yale Cancer Center.

The 30-minute radio show airs on Sunday evenings at 6 PM on WNPR and is archived on our website and on iTunes. Each week features a different cancer-related topic and guest expert. Please contact [Emily Fenton](#) if you are interested in participating as a guest on the show to discuss your clinical or research specialties.

[Learn More >>](#)

YCC Grand Rounds Evaluation

Please take a moment to complete the end of year evaluation for Yale Cancer Center's Grand Rounds. The evaluations are used for CME compliance and help us plan our schedule for next year.

[Download Evaluation >>](#)

Notables

Yale Cancer Center members **Valerie Horsely**, **Natalia Ivanova**, **Frank Slack**, and **Julie Ann Sosa** have received grants **Connecticut Stem Cell Fund** to support research projects and to seed new ideas in stem cell research for cancer.

from the desk of

Thomas J. Lynch, Jr., MD

Director, Yale Cancer Center

Physician-in-Chief Smilow Cancer

Hospital at Yale-New Haven



Countdown to the CCSG Submission

95 days

until our CCSG grant is due on September 25, 2012.

Join Yale Cancer Center on Facebook

Like us on Facebook 

[Learn More >>](#)

Alfred Lee, MD, PhD, received the **Teacher of the Year Award** from the Department of Internal Medicine for his leadership in the Traditional Internal Medicine Residency Program.

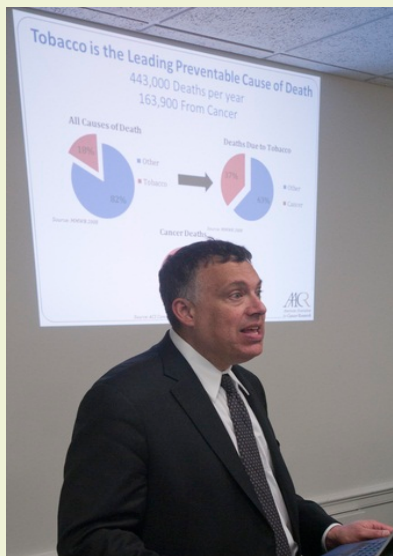
Diane Krause, MD has been selected to participate in a prestigious year-long leadership training program for women in medicine called **Executive Leadership in Academic Medicine** (ELAM) at Drexel University.

Julie Ann Sosa, MD has been named to the Society for Surgical Oncology Steering Committee directed to create the Surgical Oncology Self-Assessment Program (SOSAP), which is modeled after the American College of Surgeon's SESAP program. Dr. Sosa will represent the endocrine/head and neck disease sites.

Zhiwei Hu, PhD is the Editor-in-Chief of *The Journal of Analytical & Bioanalytical Techniques* and editor/editorial board member of *The Journal of Immune Based Therapies, Vaccines and Antimicrobials*, *The Journal of Solid Tumors*, and *Advances in Breast Cancer Research*.

Valentina Pirazzoli, a postdoctoral fellow in the **Politi lab**, has received a fellowship renewal from the **American Italian Cancer Foundation**. Valentina's project is entitled, *Uncovering mechanisms of resistance to new combinations of targeted therapies using mouse models of EGFR mutant lung adenocarcinoma*.

In the News



ACR Tobacco Control Briefing on Capitol Hill

Inside yalecancercenter.org

CV Library

The CV library is a new resource available to our members, with CVs of post-docs and others looking for positions at Yale. Please browse the listings if you have openings, and send the CVs you receive to share.

[Learn More >>](#)

Research in Progress

Video presentations from Yale Cancer Center faculty on current research projects are now available online.

[Learn More >>](#)

In the News

Read recent articles featuring experts from Yale Cancer Center.

[Learn More >>](#)

Subscribe to Yale Cancer Center Answers on iTunes

Yale Cancer Center's weekly radio program on CT Public Radio is ranked number 2 in the world for cancer programs on iTunes. Subscribe to the show.

[Learn More >>](#)

Yale Cancer Center Grand Rounds

Video presentations from Yale Cancer Center members are now available online.

[Learn More >>](#)

DirectConnect Archives

[Learn More >>](#)

Events

June 22; 7:30AM
CME / Yale Cancer Center
Present: Yale ASCO Review 2012

New Haven Lawn Club
Highlights of the Annual Meeting
Roy S. Herbst MD, PhD
[Learn More >>](#) (PDF)

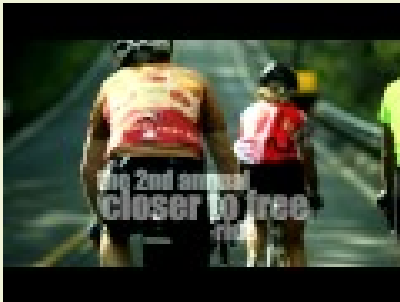
Roy S. Herbst, MD, PhD, Chief of Medical Oncology at Yale Cancer Center and Smilow Cancer Hospital, participated in a congressional briefing on Capitol Hill on Tuesday, June 12 to raise awareness of the continued need for tobacco control and research, and legislative support for the issues. Also in attendance from Yale was Dr. Benjamin Toll, Director of the Smoking Cessation Program at Smilow Cancer Hospital.

Connecticut Senator, the Honorable Richard Blumenthal, gave the closing remarks at the briefing and reiterated his support for tobacco control and research.

[Learn More >>](#)

Closer to Free Bike Ride

Join us on September 8, 2012



[Watch Video >>](#)

Employee Profile: Sage Vogel

The Employee Profile recognizes the diverse contributions made by Yale Cancer Center and Smilow Cancer Hospital staff have to meet our patient care, research, education, and outreach goals. The staff profiled are examples of the great work being done here, and the dedication and values we possess. To suggest someone to be profiled, please contact [Emily Fenton](#).

Sage Vogel, Clinical Oncology Social Worker on the 8th floor outpatient clinic at Smilow Cancer Hospital, interacts with patients diagnosed with melanoma, GI cancers, or brain tumors. The number of patients Sage



June 22; 1PM YCC Genetics and Genomics Research Program Seminar

SHM C-428

Sleep Cells: The Secret Life of Quiescent Fibroblast

Hilary Collier, PhD

[Learn More >>](#) (PDF)

June 24; 12 PM Pediatric Cancer Survivor Carnival: "Family Fun at Lighthouse Point

Lighthouse Point Park

A Celebration of Survivorship

[Learn More >>](#) (PDF)

June 24; 6 PM

Yale Cancer Center Answers WNPR

Advances in Colorectal Cancer

Howard Hochster, MD

[Learn More >>](#)

June 25; 12 PM

Yale PET Center / A Special Didactic PET Talk

Brady Auditorium, B-131

(Almost) Everything You

Wanted to Know About What

We Measure With PET, But Were

Afraid to Ask

Evan D. Morris, PhD

[Learn More >>](#)

July 1; 6 PM

Yale Cancer Center Answers WNPR

Cancer Care in the Community

Jeffrey Orell, MD

[Learn More >>](#)

Funding Opportunities

V Foundation for Cancer Research: V Scholar Grants

Yale Cancer Center has the opportunity to nominate one person for consideration for a 2012 V Scholar Grant, which provides \$100,000/year for two years for cancer research. Candidates must have completed at least two years of

meets with on a daily basis can vary, but they are all dealing with unique problems related to their cancer.

"Cancer touches every aspect of a patient's life, whether it is their career, relationships, or finances. I enjoy helping them adjust to their new life with cancer, because it is not easy, and being involved in that process is very rewarding for me," Sage explained.

Sage facilitates the GI and Melanoma Support Groups at Smilow, and commented that although patients may initially be hesitant to attend support groups, it often helps them realize that they are not alone, and it can be an empowering experience. Sage is also involved with the PACT (Parenting at a Challenging Time) Program, which helps guide parents, and grandparents, diagnosed with cancer. "PACT is specifically for parents or grandparents that have been diagnosed and working with them to figure out the best way to communicate with their children. I enjoy the variety of ways in which this allows me to interact with patients."

Bonnie Indeck, LCSW, Manager of Oncology Social Work at Smilow Cancer Hospital, and Sage's manager commented, "Sage is warm, courteous, friendly, and skilled. She is our "go to" person and is always willing to help our Social Work team, as well as members of the medical team. She goes out of her way to ensure that the needs of all patients and family members are met. Sage embodies what social work, and Smilow, are all about."

Recent Publications

Tobacco Quitlines Need to Assess and Intervene with Callers' Hazardous Drinking.

Toll BA, Cummings KM, O'Malley SS, Carlin-Menter S, McKee SA, Hyland A, Wu R, Hopkins J, Celestino P.
Alcohol Clin Exp Res. 2012 Jun 15.

[Learn More >>](#)

Obesity and endometrial cancer survival: a systematic review.

Arem H, Irwin ML.
Int J Obes (Lond). 2012 Jun 19. doi: 10.1038/ijo.2012.94.

[Learn More >>](#)

EGFR/TGF α and TGF β /CTGF Signaling in Neuroendocrine Neoplasia: Theoretical Therapeutic Targets.

Kidd M, Schimmack S, Lawrence B, Alaimo D, Modlin IM. Neuroendocrinology. 2012 Jun 15.

[Learn More >>](#)

fellowship training, hold a tenured track faculty position, have been at the assistant professor level for no more than five years, and be no more than 10 years since obtaining their MD or PhD degree. Researchers who have secured their own R01 funding are not eligible, but K08 recipients are eligible.

Please submit by email a one-page letter of introduction, a two-page outline of a proposed research project and its rationale, and a current CV for consideration to [Janice Zulkeski](#) in Daniel DiMaio's office by Friday, June 29th at 5:00 PM.

Employment Opportunities

Yale Cancer Center has several positions open.

Please share these opportunities with colleagues who may be interested in joining our team.

Operations Manager; Urology
Req# 17466

Medical Assistant
Req# 17568

Data Manager
Req# 16340

CRN 2: Clinical Research Nurse
Req# 17202

Registered Nurse; Pediatrics
Req# 17021

[Learn More >>](#)

Submissions

Please submit your recent publication and grant announcements to:

Validation of the Knowledge of Care Options Instrument To Measure Knowledge of Curative, Palliative, and Hospice Care.

Schulman-Green D, Ercolano E, Jeon S, Dixon J.
J Palliat Med. 2012 Jun 13.

[Learn More >>](#)

Deletion of the endothelial Bmx tyrosine kinase decreases tumor angiogenesis and growth.

Holopainen T, López-Alpuche V, Zheng W, Heljasvaara R, Jones D, He Y, Tvorogov D, D'Amico G, Wiener Z, Andersson LC, Pihlajaniemi T, Min W, Alitalo K.
Cancer Res. 2012 May 16.

[Learn More >>](#)

Lin28 regulates HER2 and promotes malignancy through multiple mechanisms.

Feng C, Neumeister V, Ma W, Xu J, Lu L, Bordeaux J, Maihle NJ, Rimm DL, Huang Y.
Cell Cycle. 2012 Jul 1;11(13).

[Learn More >>](#)

Sexual functioning among testicular cancer survivors: A case-control study in the U.S.

Kim C, McGlynn KA, McCorkle R, Li Y, Erickson RL, Ma S, Niebuhr DW, Zhang G, Zhang Y, Bai Y, Dai L, Graubard BI, Zheng T, Aschebrook-Kilfoy B, Barry KH, Zhang Y.
J Psychosom Res. 2012 Jul;73(1):68-73.

[Learn More >>](#)

Tipping the balance in the powerhouse of the cell to "protect" colorectal cancer.

Kidane D, Sweasy JB.
PLoS Genet. 2012 Jun;8(6):e1002758.

[Learn More >>](#)

Nanomedicine: Downsizing tumour therapeutics.

Cheng CJ, Saltzman WM.
Nat Nanotechnol. 2012 Jun 6;7(6):346-7.

[Learn More >>](#)

Renee Gaudette
Director, Public Affairs and Marketing

renee.gaudette@yale.edu

 Forward to a Friend