

# DirectConnect

Inside Yale Cancer Center

February 6, 2015

## Announcements

### Smilow Cancer Hospital Celebrates 5 Years

Last Friday was our most joyous occasion as we came together as a Smilow family to celebrate 5 years of progress since the opening of Smilow Cancer Hospital in November 2009. The Closer to Free community we have created between Yale Cancer Center and Smilow Cancer Hospital over the last 5 years is one that I am immensely proud of, and it was never more evident than throughout the heartfelt evening. The leadership of Smilow is grateful to Marna Borgstrom for her commitment throughout the building project and through our growth the last 5 years.

The greatest part of the evening was the recognition of the 5-year awards recognizing compassionate care and achievement. The energy in the room, and support for our colleagues was phenomenal! Thank you to all those who took time to nominate deserving caregivers for the awards, and to the entire Smilow family who truly inspires teamwork, achievement, and compassionate care each day.



from the desk of

**Thomas J. Lynch, Jr., MD**

Director, Yale Cancer Center

Physician-in-Chief Smilow Cancer

Hospital at Yale-New Haven



### Recent News

Read recent articles featuring experts from Yale Cancer Center [News Center >>](#)

### LATEST ARTICLES:



Coffee and Cancer  
[Read More >>](#)

Rogerio Lilienbaum, Hari Deshpande, and Roy Herbst

The **Physician Compassionate Caregiver Award** was presented to **Hari Deshpande, MD** who was nominated by the oncology nursing cluster as "the kindest, most considerate person I have ever had the pleasure of working with" and as someone who "sees the importance of highlighting the good in people." Dr. Roy Herbst welcomed Dr. Deshpande to the stage describing him as "an expert clinician in multiple diseases...a successful and respected teacher...and a wonderful, consummate physician."



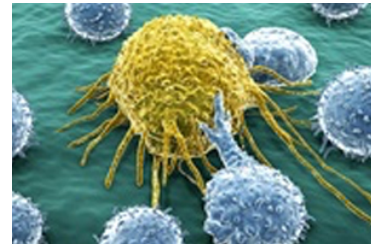
Rogerio Lilienbaum, Marisol Lassalle, and Bonnie Indeck

The **Social Worker Compassionate Caregiver Award** was presented to **Marisol Lassalle, LCSW**, following a nomination from the pediatric oncology team. Presented by Bonnie Indeck, LCSW, Marisol was honored for her dedication to her patients, and for being calm and caring, while providing a strong support system for the families of pediatric cancer patients. Bonnie said she is "uniquely gifted" to support the families in the clinic and shared a story of a 10 year old girl whose last wish was to go to Disneyland in Paris. Her trip was canceled because she was too ill to go, so Marisol brought Paris to the clinic and decorated a party for her to help bring her dream a little closer.



Watch the pure joy as toddler reunites with mom after her 3-week chemo treatment

[Read More >>](#)



New tool helps identify lung cancer patients who will respond to immune therapies

[Read More >>](#)

## Join Yale Cancer Center on Facebook

Like us on Facebook 

### LATEST POSTS:

Take a few minutes to read our Year in Review, celebrating 40 years of Yale Cancer Center and 5 years of Smilow Cancer Hospital!



[Read More >>](#)

February 4 was **#WorldCancerDay!** Join all of us here at Yale Cancer Center



Rogerio Lilenbaum, Fran Jaworowicz, and Maureen Major Campos

"Nurses are the guardians of our patients," said Dr. Rogerio Lilenbaum as he welcomed Maureen Major Campos, RN to the stage to present the **Nurse Compassionate Caregiver Award to Francine Jaworowicz, RN**, who has been caring for patients for over 30 years at the Saint Raphael Campus. Fran was nominated for the award by the oncology nursing cluster and is known and respected for her sensitivity and respect of each patient's values and unique situation. Fran accepted the award stating, "I love my job because I work with the best people in the most challenging time in their lives. I encourage you to do the best that you can for your patients every day because you need to love what you do every day."

and Smilow Cancer Hospital at Yale-New Haven as we honor patients, caregivers, researchers, nurses, and doctors around the globe for their amazing contribution to the fight against cancer.

Although significant challenges still exist in the fight against cancer, it is **#NotBeyondUs** to treat these diseases. By choosing healthy lives, delivering early detection, achieving treatment for all, and maximizing the quality of life, we can begin to minimize the impact of cancer. With 11 Care Centers across Connecticut delivering advanced clinical trials, Yale Cancer Center and Smilow Cancer Hospital are continuing the fight against cancer.



[Read More >>](#)

When last week's blizzard prevented a Connecticut bone marrow donor from reaching his donation center in Boston, nurses, doctors and researchers at Smilow Cancer Hospital at Yale-New Haven and Yale Cancer Center knew that they had to act to help save the recipient's life. With less than 24 hours of notice, our skillful team, working along side personnel from the National Marrow Donor Program (NMDP), were able to collect the stem cells from the donor and send them by courier to the patient waiting for transplant in the UK.

We are so proud of our team in New Haven and we are so thankful for all of the support provided by the NMDP!



Members of the Oncology Pharmacy Services Team

**The Smilow Outstanding Team Award** was presented by Art Lemay to the **Oncology Pharmacy Team**, and accepted by Lori Lee on behalf of the 85 pharmacists and technicians on the oncology staff. The award was given in recognition of the dedication the pharmacy team put forth in 2014 to implement remote supervision and telepharmacy services at our Care Centers to improve medication safety for our patients. The American Society of Health-System Pharmacists also honored the entire team with the 2014 Award for Excellence in Medication Use Safety.

**The Smilow Achievement Awards** were to recognize the contributions of a member of the Smilow community who has made a significant contribution to the culture and patient care at Smilow or at our Care Centers over the last 5 years. Their career has demonstrated a sustained and lasting contribution to the field of oncology and their influence has made a positive impact on the care of our patients. Two Achievement Awards were given.



[Read More >>](#)

Over the past year, Dr. Daniel Petrylak used a new antibody on 15 patients whose bladder cancer had not been reduced by traditional chemotherapy through a breakthrough clinical trial. Typically these harsh chemotherapies are the final treatment option for patients. This new antibody treatment, however, is beginning to change that. "We found a very high response rate," said Dr. Petrylak. "After twelve weeks of treatment, more than half of the patients had at least a 50 percent decline in their tumor measurements. Two patients had complete disappearance of the tumor."




[Read More >>](#)

## Follow Yale Cancer Center on Twitter

Follow us on [twitter](#)

### LATEST TWEETS:

 Diet quality and survival after ovarian cancer: results from the Wo... - PubMed - NCBI

 Is #coffee associated with lower risk for #melanoma? Here



Tom Lynch, Tracy Carafeno, and Cathy Lyons

**Tracy Carafeno, RN** was recognized with a Smilow Achievement Award for her leadership of NP 14 and 15 over the last 5 years. Tracy has been with Yale-New Haven Hospital since 1987 and the patient satisfaction scores on the two floors continually exceed national benchmarks. Cathy Lyons introduced Tracy and welcomed her to the stage by saying "it's a special privilege to recognize her work by awarding her the Smilow Achievement Award. Tracy has written the book on employee engagement." "To the staff on NP 14 and 15, every day is all about the patient and I am honored to accept this award on their behalf," Tracy said.



Tom Lynch, Thomas Duffy, and Susan Higgins

The second Smilow Achievement Award was presented to **Thomas Duffy, MD** by Dr. Susan Higgins, who recognized him for three main principles that he has carried throughout his distinguished career at Yale since 1981: a master clinician; a colleague who values his colleagues; and a physician who has mastered the art of medicine. Dr. Duffy accepted the award with a

from researcher Erikka Loftfield @YaleSPH @NCIMedia

@DrRoyHerbstYale gives Top Ten Lessons learned re: #immunotherapy for #lungcancer

A new tool for predicting how #NSCLC patients might respond to #immunotherapy paper by Kurt Schalper et al @JNCI\_Now <http://bit.ly/1C1nVBt>

#WorldCancerDay the search for better #cancer treatments is global. Thanks to .@CancerResearch for a hopeful video <http://bit.ly/1Kr7aBI>

### Closer to Free

**closer to free**  
The fund to advance cancer research and enhance patient care

### Events

**February 6; 12:00 PM**  
**YCC Research in Progress Meeting**  
NP4-101A  
*Harnessing Chemokine System for Cancer Therapy*  
Peter Jaseok Koo, PhD  
[Read More >> \(PDF\)](#)

**February 6; 3:00 PM**  
**YCC Signal Transduction Research Program**  
SHM I-116  
*Multiparameter Single Cell Investigations Using CyTOF*

few words of wisdom to end the evening, "A patient does not experience their illness in a void, but in totality. We have the responsibility to take care of them in their totality."

### **Yale Cancer Center Announces Pilot Grant Applications**

Yale Cancer Center is pleased to announce the 2015 Internal Grants competitions. These grants will support innovative basic, clinical, computational, prevention/control, and translational cancer research. The primary review criteria will be scientific excellence, innovation, cancer relevance, and the likelihood of the project evolving into federally funded cancer research. Members of Yale Cancer Center or faculty who have applied for membership are eligible to apply. Up to 8YCC Pilot Grants of up to \$50,000 for a specific project headed by a member of Yale Cancer Center will be awarded. Up to 2 YCC Collaborative Pilot (Co-Pilot) Grants of up to \$100,000 for groups of two or more members of Yale Cancer Center.

**Application Deadline:** February 19, 2015

[Learn More >>](#)

### **Castle Connolly Top Doctor Nominations Now Open**

Castle Connolly invites all licensed physicians to participate in the nomination process for the selection of Castle Connolly Top Doctors. Please take a moment to submit:

10 nominations in your specialty and up to 5 Family Medicine, 5 Internal Medicine, 5 Pediatrics, and 3 in all remaining specialties.

[Nominate Now >>](#)

## **Notables**

**Joseph Schlessinger, PhD**, the William H. Prusoff Professor of Pharmacology has been awarded the **2015 Frontiers of Knowledge Award in Biomedicine** from the Madrid-based BBVA Foundation in recognition of his work leading to the first personalized treatments for cancer. Dr. Schlessinger shares the prize with Tony Hunter of the Salk Institute and Charles L. Sawyers, MD, of Memorial Sloan Kettering Cancer Center, for "carving out the path that led to the development of a new class of successful cancer drugs."

[Read More >>](#)

**Pasquale Patrizio, MD**, Professor of Obstetrics, Gynecology & Reproductive Sciences and Director of Fertility Preservation Program and a member of the Yale Cancer Center Developmental Therapeutics Program, has been elected President of the **International Society for Fertility Preservation**.

Ruth Montgomery, PhD  
*CRISPR/Cas9 Technology;  
Revolutionizing Genome Editing*  
Jonathan Alderman and William  
Philbrick, PhD

[Read More >> \(PDF\)](#)

**February 8; 6:00 PM**  
**Yale Cancer Center Answers**  
WNPR

*Genetic Heterogeneity in Breast  
Cancer*

Christos Hatzis, PhD

[Read More >>](#)

**February 9; 11:00 AM**  
**YCC Radiobiology and  
Radiotherapy Research  
Program Seminar**

SHM I-304

*Hypoxia and Cancer Stem Cell  
Functions*

Zhong Yu, PhD

[Read More >>](#)

**February 10; 9:30 AM**  
**Pathology Research in  
Progress Talks**

TAC N-107

TBA

Daniel Carvajal, MD and

Arvindhan Nagarajan, PhD

[Read More >>](#)

**February 10; 12:00 PM**  
**Yale Cancer Center Grand  
Rounds**

Park Street Auditorium

*Genomes and Therapeutic  
Vulnerabilities in*

*Gastroesophageal Cancer*

Adam Bass, MD, PhD

[Read More >> \(PDF\)](#)

**February 10; 5:00 PM**  
**YNHH Transforming  
Healthcare Grand Rounds**

Fitkin Amphitheater, LMP 1094

*Innovating with Impact: Turning  
Ideas into Actions and Outcomes*

Roy Rosin, MBA

[Read More >>](#)

**February 12; 5:00 PM**  
**YCC Who's Who of 2014**

BCMM 206/208

*New YCC Members Happy Hour*

[Read More >> \(PDF\)](#)

**Qin Yan, PhD**, Associate Professor of Pathology and a member of Yale Cancer Center's Genetics and Genomics Research Program, has been awarded **R21 Grant** from the **National Cancer Institute** to study the roles of epigenetic regulators in breast cancer metastasis. The \$398,352 grant will be conducted in collaboration with Drs. Don Nguyen, Narendra Wajapeyee, and David Rimm.

**James Hansen, MD**, Assistant Professor of Therapeutic Radiology and a member of the Yale Cancer Center Radiobiology and Radiotherapy Research Program gave the invited State-of-the-Art Lecture in Immunology and Rheumatology at the **Western Regional Meeting of the American Federation for Medical Research** last week, entitled "Targeting cancer with lupus autoantibodies." Dr. Hansen's postdoctoral research associate, Philip Noble, PhD, was selected as a Scholar of the Western Section of the American Federation for Medical Research. In addition, the team presented the abstract: "An optimized lupus autoantibody fragment for targeted therapy of DNA repair-deficient malignancies", with authors: Philip W. Noble, Grace Chan, Melissa R. Young, Richard H. Weisbart, and James E. Hansen.

## Research in the News

### Study Offers New Look at Complex Head and Neck Tumor Behavior

Head and neck squamous cell cancer (HNSCC) ranks among the top ten most prevalent cancers in the United States. Despite its prevalence, little is known about how this cancer develops and spreads. However, in a paper published in *Nature*, researchers offer critical new information about head and neck cancers.

An increasing number of head and neck cancers are caused by the human papilloma virus (HPV). Using tissue from HPV-positive and HPV-negative (largely linked to smoking) HNSCC tumors, researchers from institutions around the country referenced The Cancer Genome Atlas to develop a comprehensive assessment of alterations, or oncogenes, that could play a role in how the tumors develop and metastasize, said Wendell Yarbrough, MD, section chief of otolaryngology at Yale School of Medicine and Clinical Program Leader of the Head & Neck Cancer Program at Smilow Cancer Hospital at Yale-New Haven.

[Read More >>](#)

### New Tool Helps Identify Lung Cancer Patients Who Will Respond to Immune Therapies

A Yale-led team of researchers has developed a new assay, or investigative tool, to measure the anti-tumor immune activity in non-small cell lung cancer tumors that could lead to a more

### February 13; 12:00 PM YCC Research in Progress Meeting

NP4-101A  
TBA

[Read More >>](#)

### February 15; 6:00 PM Yale Cancer Center Answers WNPR

*Myelodysplasia Syndromes*  
Valeria Santini, MD

[Read More >>](#)

### February 16; 11:00 AM YCC Radiobiology and Radiotherapy Research Program Seminar

SHM I-304

*Regulation of Fanconi Anemia DNA Repair Pathway by Hypoxic Stress*

Susan Scanlon, PhD

[Read More >>](#)

### February 17; 9:30 AM Pathology Research in Progress Talks

TAC N-107

TBA

Wang Min, PhD and Nicole Calabro

[Read More >>](#)

### February 17; 12:00 PM Smilow Case Notes

Park Street Auditorium

*Anticoagulation Havoc*

Katherine Harvey, MD

*Palliation with Dignity*

Mehmet Altan, MD

[Read More >> \(PDF\)](#)

### February 18; 12:00 PM YCC Cancer Prevention and Control Research Program

YSPH Room 216

*Patterns of Oral and Injected Chemotherapy Use in Cancer*

Amy Davidoff, PhD, MS

[Read More >>](#)

### February 20; 12:00 PM YCC Research in Progress Meeting

NP4-101A

accurate determination of which patients will respond to immune therapy drugs. Findings from the study were published in the *Journal of the National Cancer Institute*.

The assay simultaneously measures subpopulations of tumor-infiltrating lymphocytes (TILs), a type of white blood cell that attacks tumors. The presence of high amounts of TILs in tumors is associated with better treatment outcomes. The new method differs from existing immune-measuring assays in that it is objective, quantitative, and reproducible, said the paper's first author, Dr. Kurt Schalper, associate research scientist in Yale School of Medicine and director of the Translational Immunology Laboratory at Yale Cancer Center.

[Read More >>](#)

TBA  
Harriet Kluger, MD  
[Read More >>](#)

## Submissions

Please submit your recent publication and grant announcements to:

**Renee Gaudette**  
Director, Public Affairs and Marketing  
[renee.gaudette@yale.edu](mailto:renee.gaudette@yale.edu)

## Employee Profile: Carol Deminie, PhD

The Yale Gastrointestinal Cancer Biorepository houses tissue and blood specimens from patients diagnosed with Gastrointestinal (GI) cancers at Smilow Cancer Hospital to be used in future research. Carol Deminie, PhD, is a Research Associate that helps recruit patients to participate in the biorepository, administers the intake questionnaire and also acquires and processes tissues collected from surgical specimens in collaboration with the Yale Pathology Tissue Services. With specimens from over 450 people, The GI Cancer Biorepository has thousands of blood and tissue specimens.



The main inclusion criterion for Biorepository enrollment is a primary GI tumor such as liver, colon or pancreatic, that has not yet been exposed to treatment such as chemotherapy. If a physician thinks that a patient is a good candidate, Carol will meet with them to explain the process. "Most patients are very eager to participate," said Carol. "They know that by allowing us to bank their specimen, they are potentially furthering cancer research down the road."

Researchers may use a specimen to isolate the RNA or DNA to find new genetic markers through next-generation sequencing or sample proteins from tissue or blood. Carol takes a full history of the patient, including family history of cancer, lifestyle habits such as smoking, physical activity and dietary preferences, and basic questions about other health conditions in order to provide

 [Forward to a Friend](#)



researchers a complete clinical and epidemiologic annotation that complements each archived specimen. All collected data is then stored in OnCore, Yale Cancer Center's clinical trials data management tool, to help accurately track and retrieve samples and data once a project is approved. Each sample is also linked to the patient's EPIC medical record which captures offered treatments and patient response. This comprehensive resource is unique to Yale Cancer Center and is a benefit to our researchers.

Dr. Bonnie Gould Rothberg, Assistant Professor of Medicine (Medical Oncology), Epidemiology and Pathology, whose lab Carol works in, commented, "Carol is responsible for handling all biospecimens in the lab as well as collecting all of the clinicopathologic data on enrolled participants. By necessity, she has forged relationships with Smilow patients as she performs direct face-to-face interviews as part of our study protocol. She is an invaluable asset to the team." The Yale GI Cancer Biorepository is generously supported by Dr. Howard Hochster and the team is grateful to all of the clinicians who allow Carol access to their clinics and patients.

## Funding and Award Opportunities

### Grants to Improve Patient Care

Yale Cancer Center and Smilow Cancer Hospital at Yale-New Haven are pleased to announce a new program to fund small projects to improve patient care at Smilow Cancer Hospital. Monies for this program have come through our "Closer to Free" fund. Any employee at Smilow Cancer Hospital who develops a small project may apply by submitting an application for review. Projects can range from a patient education program to stress management for staff. In order to be eligible, a current Cancer Center Member must sponsor the employee. A listing of active cancer center members is available [here](#).

**Application Deadline:** February 27, 2015

[Learn More and Download Application >>](#)

### Bladder Cancer Advocacy Network (BCAN) Young Investigator Awards

The \$100,000 grants will cover costs associated with a two-year bladder cancer-specific research proposal. The purpose of this grant is to support the development of outstanding research scientists and clinical cancer research investigators who have demonstrated a commitment to improving the understanding and treatment of bladder cancer. Investigators may be working in basic, translational, clinical, epidemiologic, bioengineering or any other field, but must be working in a research environment capable of supporting transformational bladder cancer research.

**Application Deadline:** March 4, 2015

[Learn More >>](#)

### **2015 Taub Foundation Grants Program for MDS Research**

Funding up to \$600,000 over 3 years.

The Taub Foundation Grants Program for Myelodysplastic Syndromes Research was created to support high-impact, innovative translational research to understand the underlying causes of MDS and to advance its treatment and prevention. The Program specifically focuses on MDS research, exclusive of AML and MPN. Studies focusing on molecular genetics, epigenetics, splicing factors, stem cells, the microenvironment and novel therapeutic targets relevant to MDS are encouraged. The Taub Program supports independent investigators at all stages of their careers. Awards are not restricted to investigators currently working in MDS. Applications from investigators in other fields and collaborative efforts are encouraged.

**Application Deadline:** March 17, 2015

[Learn More >>](#)

### **2015 New York Stem Cell Foundation - Innovator Awards for Early Career Investigators in Translational Stem Cell Research**

Funding up to \$1.5 M over 5 years.

NYSCF is soliciting applications from early career investigators for Innovator awards to be used for exploring the basic biology and translational potential of stem cells. The goal of this initiative is to foster bold and innovative scientists with the potential to transform the field of stem cell research, and advance understanding and use of stem cells in the development of treatments for human disease. In addition to providing funding, NYSCF partners with investigators to advance and translate their research. To be eligible, candidates must be within 5 years of starting a faculty or comparable position on June 1, 2015.

**Application Deadline:** March 18, 2015

[Learn More >>](#)

### **2015 Sontag Foundation - Early Career Distinguished Scientist Award for Brain Cancer Research**

Career development award supporting early career scientists with inspiring, potential-laden brain cancer proposals. The foundation is highly interested in researchers that may bring new perspectives to bear on the complex questions related to brain cancer.

Applicant's initial faculty appointment must have been no earlier than March 2012.

Up to \$600,000 over 4 years.

**Application Deadline:** March 19, 2015

[Learn More >>](#)

### **Yale-CORE Career Development Program in Patient-Centered Outcomes Research**

The Yale-CORE Career Development Program in Patient-Centered Outcomes Research (Y-CORE PCOR) is an AHRQ-funded K12 program within the Yale-New Haven Hospital Center for Outcomes Research and Evaluation that is designed to train junior faculty and postdoctoral fellows in patient-centered outcomes research. Y-CORE PCOR will provide training and career development support for 2 scholars who have a clinical or research doctoral degree and are committed to a career in patient-centered outcomes research (PCOR) and comparative effectiveness research (CER).

**Application Deadline:** April 1, 2015

[Learn More >>](#)

## **Recent Publications**

### **The role of infliximab in the treatment of superficial granulomatous pyoderma of the head and neck.**

Ibrahim O, Bunick CG, Srivastava B, Lazova R, Ko CJ, Watsky KL.

J Am Acad Dermatol. 2014 Nov;71(5):e222-5.

[Read More >>](#)

### **Clinical characteristics associated with Spitz nevi and Spitzoid malignant melanomas: the Yale University Spitzoid Neoplasm Repository experience, 1991 to 2008.**

Lott JP, Wititsuwannakul J, Lee JJ, Ariyan S, Narayan D, Kluger HH, Lazova R.

J Am Acad Dermatol. 2014 Dec;71(6):1077-82.

[Read More >>](#)

### **Comparison of the expression of vimentin and actin in spitz nevi and spitzoid malignant melanomas.**

Alomari AK, Klump V, Neumeister V, Ariyan S, Narayan D, Lazova R.

Am J Dermatopathol. 2015 Jan;37(1):46-51.

[Read More >>](#)

### **Clinicopathologic features and survival in Spitzoid malignant melanoma and conventional malignant melanoma.**

Semkova K, Lott JP, Lazova R.

J Am Acad Dermatol. 2014 Sep;71(3):516-20.

[Read More >>](#)

**The Left Sided Predominance of Breast Cancer is Decreasing.**

Onibokun O, Killelea BK, Chagpar AB, Horowitz NR, Lannin DR. Breast J. 2015 Jan 13.

[Read More >>](#)

**Role of Chitinase 3-like-1 and Semaphorin 7a in Pulmonary Melanoma Metastasis.**

Ma B, Herzog EL, Lee CG, Peng X, Lee CM, Chen X, Rockwell S, Koo JS, Kluger H, Herbst RS, Szol M, Elias JA. Cancer Res. 2015 Feb 1;75(3):487-96.

[Read More >>](#)

**Objective Measurement and Clinical Significance of TILs in Non-Small Cell Lung Cancer.**

Schalper KA, Brown J, Carvajal-Hausdorf D, McLaughlin J, Velcheti V, Syrigos KN, Herbst RS, Rimm DL. J Natl Cancer Inst. 2015 Feb 3;107(3).

[Read More >>](#)

**Phase 1b study of the mammalian target of rapamycin inhibitor sirolimus in combination with nanoparticle albumin-bound paclitaxel in patients with advanced solid tumors.**

Abu-Khalaf MM, Baumgart MA, Gettinger SN, Doddamane I, Tuck DP, Hou S, Chen N, Sullivan C, Lezon-Geyda K, Zelterman D, Hatzis C, Deshpande H, Digiovanna MP, Azodi M, Schwartz PE, Harris LN.

Cancer. 2015 Feb 3.

[Read More >>](#)

**Highly multiplexed profiling of single-cell effector functions reveals deep functional heterogeneity in response to pathogenic ligands.**

Lu Y, Xue Q, Eisele MR, Sulistijo ES, Brower K, Han L, Amir EA, Pe'er D, Miller-Jensen K, Fan R.

Proc Natl Acad Sci U S A. 2015 Feb 2.

[Read More >>](#)

**Uptake of exemestane chemoprevention in postmenopausal women at increased risk for breastcancer.**

Aktas B, Sorkin M, Pusztai L, Hofstatter EW.

Eur J Cancer Prev. 2015 Jan 30.

[Read More >>](#)

**Central vs. peripheral tumor location: influence on survival, local control, and toxicity following stereotactic body radiotherapy for primary non-small cell lung cancer.**

Park HS, Harder EM, Mancini BR, Decker RH.

J Thorac Oncol. 2015 Jan 28.

[Read More >>](#)

**Zombies in TCGA.**

DiMaio D.

J Virol. 2015 Jan 28.

[Read More >>](#)

**MicroRNA let-7a Modifies the Effect of Self-Renewal Gene HIWI on Patient Survival of Epithelial Ovarian Cancer.**

Lu L, Katsaros D, Risch HA, Canuto EM, Biglia N, Yu H.

Mol Carcinog. 2015 Jan 28.

[Read More >>](#)

**BRAF inhibitor resistance mediated by the AKT pathway in an oncogenic BRAF mouse melanoma model.**

Perna D, Karreth FA, Rust AG, Perez-Mancera PA, Rashid M, Iorio F, Alifrangis C, Arends MJ, Bosenberg MW, Bollag G, Tuveson DA, Adams DJ.

Proc Natl Acad Sci U S A. 2015 Jan 26.

[Read More >>](#)

**The Wonderful World of the Windpipe: A Review of Central Airway Anatomy and Pathology.**

Lawrence DA, Branson B, Oliva I, Rubinowitz A.

Can Assoc Radiol J. 2015 Feb;66(1):30-43.

[Read More >>](#)