

DirectConnect

Inside Yale Cancer Center

January 8, 2016

Announcements

Smilow Welcomes New Care Center

On January 1, Smilow Cancer Hospital expanded our Care Center network to include Lawrence & Memorial's Cancer Center in Waterford, CT. I am pleased to have Smilow services available to patients in the southeast corner of Connecticut and would like to thank Anne Chiang, Smilow Chief Network Officer, Art Lemay, Executive Director of the Smilow Network, Monica Fradkin, Program Manager for Oncology Nursing, and Kevin Vest, Deputy Director for the Cancer Center, for their leadership during this integration.

This new collaboration brings three new physicians to Yale Cancer Center's sections of medical oncology and hematology. Their strategic alignment with our Disease Teams will bring new clinical trial opportunities to patients at Lawrence & Memorial Cancer Center. Please join me in welcoming Drs. Hellman, Haldas, and Newton to Smilow; I know they will be a timely addition to our patient care priorities and clinical research efforts.



Dr. Richard M. Hellman is the Medical Director of the L+M Cancer Center and his area of clinical interest is in neuro-oncology. He earned his medical degree at Wake Forest School of Medicine in Winston-Salem, NC. Dr. Hellman was an intern and resident at North Carolina Baptist Hospital, and later served clinical fellowships in hematology and oncology at Beth Israel Hospital and Harvard Medical School.

from the desk of

Peter G. Schulam, MD, PhD

Director, Yale Cancer Center
and Physician-in-Chief,
Smilow Cancer Hospital (Interim)

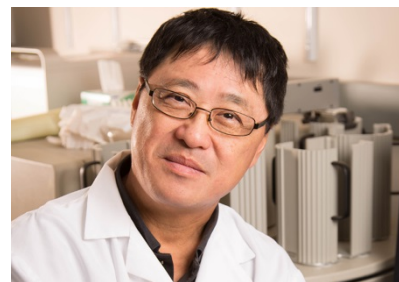


Recent News

Read recent articles featuring experts from Yale Cancer Center

[News Center >>](#)

LATEST ARTICLES:



Record \$67M Investment Round for Yale Researcher to Develop New Cancer Drugs

[Read More >>](#)



Dr. Jason R. Haldas received his medical degree from the University of Virginia School of Medicine in Charlottesville, Va. He cares for patients with all diagnoses at the Waterford Care Center. His residency was in general internal medicine at Rhode Island Hospital (Brown University), followed by his fellowship in hematology and oncology at Medical University of South Carolina in Charleston, SC. His clinical expertise is in genitourinary oncology, focused on prostate cancer and the newest treatment options for his patients.



Dr. Benjamin R. Newton earned his medical degree at Tufts University School of Medicine, followed by internship and residency in internal medicine at Tufts-New England Medical Center. Dr. Newton served a clinical fellowship in hematology/oncology at Tufts Medical Center from 2006-2009. He has a special interest in caring for patients with gastrointestinal malignancies.

Melinda Irwin Receives Award

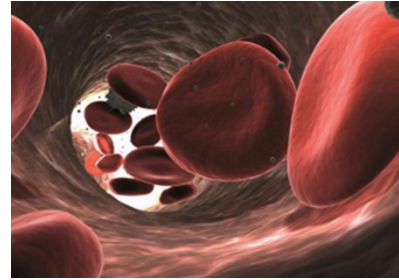
The leadership of Yale Cancer Center has selected Melinda L. Irwin, PhD, MPH, Associate Director for Population Sciences and Professor of Epidemiology, as the first recipient of the Yale Class of 1961 Cancer Research Award. This annual award recognizes significant accomplishments in cancer research at Yale University by a young member of the faculty, coupled with the expectation for future outstanding contributions to our understanding of the causes and cures for cancer.



[Learn More >>](#)

Mindfulness Solutions

Please register for this free eight-week course, facilitated by Phillip Levine, mindfulness instructor, teaches both formal and informal mindfulness practices to caregivers. Class intended for Smilow and Yale Cancer Center



New Weapons in the Fight Against Multiple Myeloma
[Read More >>](#)



A Survival Advantage for Older Patients with LS-SCLC who Receive Both Chemotherapy and Radiation? Yes, says a Study in JCO
[Read More >>](#)



After mastectomy, breast reconstruction may boost body image
[Read More >>](#)

Join Yale Cancer Center on Facebook

caregivers, but all employees may register as space allows. Attendees will learn to appreciate each moment and life to its fullest, moment by moment. Mondays from 4-5pm, beginning on January 25. Contact [Bud Wassell](#) for more information

[Learn More >>](#)

Notables

Mark A. Lemmon, PhD, Co-Director of the **Yale Cancer Biology Institute**, has been named the David A. Sackler Professor of Pharmacology. Dr. Lemmon is a biochemist and structural biologist whose research focuses on how molecules work and how cells signal, especially in growth control.

[Learn More >>](#)

Michigan State University (MSU) hosted commencement ceremonies on Friday, December 18. MSU College of Osteopathic Medicine alumna **Patricia LoRusso, DO**, professor of medicine and associate director of innovative medicine at Yale Cancer Center, addressed graduates and received an **honorary doctorate of science** at the ceremony.

[Learn More >>](#)

The Breast Cancer Alliance recently awarded two grants to members of the Breast Center. The first is to **Dr. Brigid Killelea** to support the Breast Center's Interdisciplinary Breast Fellowship Program for the 2016-17 year. **Dr. Andrea Silber** also received an education and outreach grant from the Alliance to support her outreach efforts in the community from the Breast Center. Congratulations to both Dr. Killelea and Dr. Silber for their efforts!

The 2016 Small Projects to Improve Patient Care grant recipients, funded through the **Closer to Free Fund**, have been announced. Chosen by committee chaired by Ruth McCorkle, RN, PhD, Assistant Director for Psychosocial Oncology, the following projects have been funded:

Like us on **Facebook** 

LATEST POSTS:

Congratulations to Yale alumnus, Jonathan Rothberg, PhD, who will be awarded the National Medal of Technology and Innovation at the White House later this month!

Dr. Rothberg is a pioneer in genome sequencing and his introduction of massively parallel DNA sequencing technology greatly increased the speed and efficiency of genomic analysis. He has led or been a major part of well-known sequencing projects - including the first human genome (of Nobel laureate Jim Watson), the Neanderthal genome, and incorporation of sequencing technology on semi-conductor chips. He is an adjunct professor of genetics at Yale.



[Read More >>](#)

Yale Cancer Center welcomes our newest Care Center - Smilow Cancer Hospital Care Center at Waterford - to the team! Joining our faculty are Drs. Richard Hellman, Jason Haldas, and Banjamin Newton

- **Jane Jeuland**, Palliative Care Chaplain - Beyond Why.org: Online Social Support for Oncology Staff
- **Dana Shaffer**, Art Expression Coordinator - Development of an Anthology of Patient Stories written during personal story writing workshops
- **Lisa Barbarotta, APRN-BC**, Nurse Practitioner - IMPACT- Improving the mindset and perceptions about cancer together: An educational conference for young adults living with cancer
- **Taylor Healey, BSN, RN**, North Pavilion 12 - Respite Room for patients and families

Congratulations to the **2016 Lion Heart Grant** recipients! The grant committee reviewed several outstanding applications and chose the following three projects for funding:

Preclinical Evaluation of Candidate Drug Combinations for Treatment of Triple Negative Breast Cancer

David F. Stern, PhD

Targeting CaSR/GABABR1 Heterodimers to Treat Bone Metastases in Breast Cancer

John J Wysolmerski, MD

How Does Na⁺/I Symporter (NIS) Expression in Metastatic Breast Cancer Correlate with Histopathological, Biological and Clinical Parameters?

Nancy Carrasco, MD

Congratulations to Yale Cancer Center's 2015-16 **American Cancer Society Institutional Research Grant** award winners:

Sidi Chen, PhD

Department of Genetics & Systems Biology Institute
Investigating Functional Roles of MIR-345 in Cancer Metastasis

Nadya Dimitrova, PhD

Department of Molecular, Cellular and Developmental Biology
The roles of p53-regulated long non-coding RNAs in tumorigenesis

Smita Krishnaswamy, PhD

Department of Genetics
Understanding and Disrupting Dynamic Rewiring in Signaling and Gene Regulatory Pathways during the Epithelial-to-Mesenchymal Transition

Christos Hatzis, PhD

from Lawrence and Memorial's Cancer Center.



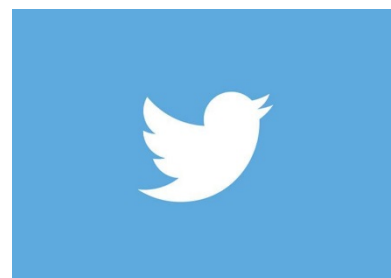
[Read More >>](#)

Thanks to so many generous donors who gave toys to Yale-New Haven Children's Hospital, the Child Life Department's Snowflake Shoppe was well stocked with fun this holiday season! Families hospitalized on Christmas Day were invited to choose gifts for the patient and siblings - all at no charge - to bring joy to the whole family.



[Read More >>](#)

Help @YaleCancer meet it's New Year's goal on Twitter.



[Read More >>](#)

Section of Medical Oncology Exploring the dynamics of de-differentiation in breast cancer cells

Matthew Strout, MD, PhD

Section of Hematology Therapeutic targeting of programmed DNA damage in B cell lymphoma

Research in the News

Immune therapy drug results in prolonged survival in advanced lung cancer

A Yale-led international study in patients with advanced non-small cell lung (NSCLC) cancer resistant to chemotherapy has found a promising weapon in an immune therapy drug commonly used to treat other cancers. The findings were published Dec. 19 in *The Lancet* and presented at the 2015 annual conference of the European Society for Medical Oncology in Singapore.

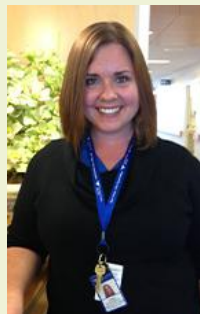
The study, called KEYNOTE 010, compared pembrolizumab with the chemotherapy drug docetaxel in 1,034 patients with NSCLC whose tumors expressed the PD-L1 biomarker. PD-L1 is a protein expressed by many tumor types that can render the cancer invulnerable to immune attack. The study endpoints were overall survival (OS), progression-free survival (PFS), and safety.

Patients whose tumors expressed even low levels of PD-L1 benefited significantly from pembrolizumab.

[Read More >>](#)

Employe Profile: Cara Henderson


Cara Henderson, RN, Assistant Patient Service Manager (APSM) on NP-15 has a very personal reason for deciding to start her nursing career in oncology and dedicating her work to the safety and care of her patients. 11 years ago, she was the patient, being treated at Yale Cancer Center for lymphoma, and has committed herself to making sure patients are supported and receive the highest quality of care.





Follow Yale Cancer Center on Twitter

Follow us on 


LATEST TWEETS:

 MT Dr. Madhav Dhodapkar on New weapons in the fight against multiple myeloma <http://on.wsj.com/1JTNGGI> via @WSJ

 @DrChrisCorso A study Survival Advantage for Older Patients with LS-SCLC who Receive Chemo, Radiation <http://bit.ly/1OHO4bW> @ASCO

 Dr. Madhav Dhodapkar comments in @WSJ on a decade's worth of progress against multiple #myeloma <http://on.wsj.com/1Z1YSaS> @ronwinslow @YaleMed

 Basic facts matter: Asuming your risk of #cancer with tools from @nci <http://bit.ly/1JTSG2z>

 We are so thankful for the generosity of people who give what they can. Every gift has the power to transform <http://on.fb.me/1QYRxKf>

Closer to Free

closer to free

The fund to advance cancer research and enhance patient care

In her current role under Tracy Carafeno, RN, MS, Patient Service Manager for both the women's oncology and surgical oncology units, Cara helps to oversee the day to day operations of the surgical oncology inpatient unit. She interacts closely not only with patients, but also staff to make sure they have the tools necessary to provide safe and efficient care to patients.

"It's important that the staff feels supported so that they can be successful at the bedside. When they have the proper tools, everyone benefits, especially the patients. This is one of the reasons why we consistently have high Press Ganey scores. I try to be an advocate for my staff and in turn, they are some of the hardest working people I know," said Cara.

By providing daily electronic surveys to patients, Cara can address and resolve issues while patients are still in the hospital, instead of learning about it once they have left. She is constantly working to make improvements based on patient insight, as they have the opportunity to observe all aspects of care. They see all types of cancers in the unit, but the two most common are head and neck and GI cancers. A recent initiative spearheaded by Cara and her team aims to keep head and neck cancer patients out of the ICU after surgery to the floor of the mouth. By keeping select patients that qualify out of the ICU, they avoid complications such as delirium and are able to get up and moving faster and are discharged sooner.

Tracy commented, "Cara is a dedicated and compassionate nurse and leader, and is passionate about her role. Cara puts the patients and families at the center of all her decisions. This shows in the outcomes on her unit where patient satisfaction is at the 99th percentile."

Cara commented that without the staff on this unit, none of these outcomes would be possible and that their dedication is directly related to the high quality of care that patients receive at Smilow.

Funding and Award Opportunities

Lymphatic Education & Research Network Postdoctoral Fellowship Awards Program

The Lymphatic Education & Research Network (LE&RN) is committed to supporting basic and translational research

Events

January 8; 1PM

YCC Virus and Other Infection-Associated Cancers Research Program

SHM I-304

The Innate Immune Response to HPV Infection

Alex Lipovsky, PhD

[Read More >>](#)

January 10; 6PM

Yale Cancer Center Answers

WNPR

The Role of Pathology in Fighting Cancer

David Rimm, MD, PhD

[Read More >>](#)

January 12; 9:30AM

Pathology Research in Progress Talks

TAC N-107

TBA

Jian "CJ" Cao, PhD and Marissa Holmbeck

[Read More >>](#)

January 12; 12PM

Yale Cancer Center Grand Rounds / Blanche Tullman Memorial Lectureship

Park Street Auditorium

Therapy of Lymphoma Inspired by Functional and Structural Genomics

Louis M. Staudt, MD, PhD

[Read More >>](#)

January 12; 5PM

YNHH Transforming Healthcare Grand Rounds

Fitkin Amphitheater

The Effect of Competition, Mergers and Antitrust in Healthcare

Fiona Scott Morton

that fosters an interdisciplinary field of investigators conducting lymphatic research. The supported research will improve our understanding and advance the prevention, diagnosis, and novel treatments of lymphedema and other lymphatic disorders. In each grant cycle, at least one fellowship will specifically focus on lymphedema.

Application Deadline: January 15, 2016

[Learn More >>](#)

Pancreatic Cancer Action Network Grants

Two funding options are available: a Research Acceleration Network (RAN) grant and a Research Acceleration Network (RAN) - 2 grant. The RAN grant provides a total of \$1 million to pancreatic cancer research projects that include a clinical project designed to improve the prevention, detection/diagnosis/ prognosis, treatment, or supportive care for pancreatic cancer. The RAN-2 grant provides a total of \$2 million to pancreatic cancer research projects that include a Phase II treatment clinical trial or a robust prevention, detection/diagnosis/prognosis, or supportive care trial implemented no later than the beginning of the second year of the grant term.

Letter of Intent Deadline: January 15, 2016

[Learn More >>](#)

L'Oréal-UNESCO For Women in Science Fellowship Program Award

The L'Oréal-UNESCO For Women in Science program recognizes and rewards the contributions women make in STEM fields and identifies exceptional women researchers committed to serving as role models for younger generations. More than 2,250 women scientists in over 110 countries have been recognized since the program began in 1998.

In the US, the For Women In Science fellowship program awards five post-doctoral women scientists annually with grants of \$60,000 each. Applicants are selected from a variety of fields, including the life and physical/material sciences, technology (including computer science), engineering, and mathematics.

I invite you to collaborate with us and spread the word to your community about this special fellowship program for exceptional female post-doctoral researchers who are also committed to serving as role models for the next generation of girls in STEM.

[Read More >>](#)

January 12; 5PM

YCC Breast Clinical Lecture Series

Smilow First Floor Conference Room, 1-330

Mastectomy: Update on a Traditional Approach

Nina Horowitz, MD

[Read More >>](#)

January 14th; 12PM

Yale Cancer Center / Schwartz Center Rounds

Park Street Auditorium

TBA

[Read More >>](#)

January 14; 12:30PM

Pathology Grand Rounds

Fitkin Amphitheater

A Time for Myc, Metabolism and Cancer

Chi Van Dang, MD, PhD

[Read More >>](#)

January 15; 2PM

YSM Dean's Workshop

TAC N-107

Enhancing Hematology Research

Carolyn W. Slayman, PhD and Diane Krause, MD, PhD

[Read More >>](#)

January 17; 6PM

Yale Cancer Center Answers

WNPR

Taking Control of Cancer through Nutrition and Exercise

Heidi Larson, RD and Courtney McGowan, MS, RD

[Read More >>](#)

January 19; 9:30AM

Pathology Research in Progress Talks

TAC N-107

Application Deadline: February 5, 2016

[Learn More >>](#)

NCCN and Immunogen

National Comprehensive Cancer Network® (NCCN®) is pleased to announce that it has received a research grant from ImmunoGen Inc. to support NCCN investigator initiated clinical studies of mirvetuximab soravtansine (previously known as IMGN853) in the treatment for selected solid tumors. In brief, investigators are asked to submit RFPs detailing proposed research studies. The overall aim of this RFP is to develop innovative studies of mirvetuximab soravtansine in ovarian, endometrial, and breast cancer. Collaborative studies between NCCN Member Institutions are encouraged.

Application Deadline: February 15, 2016

[Learn More >>](#)

Damon Runyon-Sohn Pediatric Cancer Fellowship Award

This award provides funding to basic scientists and clinicians who conduct research with the potential to significantly impact the prevention, diagnosis or treatment of one or more pediatric cancers. Applicants are not required to be pediatricians or members of pediatric departments; however, the proposed research must have direct relevance to one or more pediatric cancers. This four year award is \$50,000 per year for basic scientists, and \$60,000 per year for physician scientists. In addition, an annual \$2,000 expense allowance is awarded to the laboratory in which the Fellow is working and can be used by the Fellow for his/her educational and scientific expenses. The Foundation also provides a Dependent Child Allowance of \$1,000 per child per year. The award may not be used for institutional overhead or indirect costs.

Application Deadline: March 16, 2016

[Learn More >>](#)

Recent Publications

PMCA2 regulates HER2 protein kinase localization and signaling and promotes HER2-mediated breast cancer.

TBA

Amalia Avila Figueroa, PhD and Robert Amezcuita

[Read More >>](#)

January 19; 5PM

Digestive Diseases Research Seminar Series

TAC, S-247

New Trends in Molecular Stratification of Liver Cancer Patients

Augusto Villanueva, MD, PhD

[Read More >>](#)

January 19; 5PM

YCC Breast Clinical Lecture Series

Smilow First Floor Conference Room, 1-330

TBA

[Read More >>](#)

January 20; 7AM

Urology Grand Rounds

Beaumont Room

Salvage Treatment for Recurrent Prostate Cancer after Radiation Therapy

Preston Sprenkle, MD

[Read More >>](#)

January 20; 12PM

YCC Cancer Prevention & Control Research Program Seminar

YSPH, Room 216

Yale Weight Loss Program

Wajahat Mehal, PhD, MD

[Read More >>](#)

January 21; 12:30PM

Pathology Grand Rounds

Fitkin Amphitheater

A Connecticut Children's Story

Manju Prasad, MD

[Read More >>](#)

Jeong J, VanHouten JN, Dann P, Kim W, Sullivan C, Yu H, Liotta L, Espina V, Stern DF, Friedman PA, Wysolmerski JJ.

Proc Natl Acad Sci U S A. 2016 Jan 4.

[Read More >>](#)

Acute myeloid leukemia requires Hhex to enable PRC2-mediated epigenetic repression of Cdkn2a.

Shields BJ, Jackson JT, Metcalf D, Shi W, Huang Q, Garnham AL, Glaser SP, Beck D, Pimanda JE, Bogue CW, Smyth GK, Alexander WS, McCormack MP.

Genes Dev. 2016 Jan 1;30(1):78-91.

[Read More >>](#)

A Novel Inherently Radiopaque Bead for Transarterial Embolization to Treat Liver Cancer - A Pre-clinical Study.

Duran R, Sharma K, Dreher MR, Ashrafi K, Mirpour S, Lin M, Schernthaner RE, Schlachter TR, Tacher V, Lewis AL, Willis S, den Hartog M, Radaelli A, Negussie AH, Wood BJ, Geschwind JF.

Theranostics. 2016 Jan 1;6(1):28-39.

[Read More >>](#)

Application of Medicare's New Technology Add-on Payment Program for Blinatumomab.

Dhruva SS, Prasad V.

JAMA Oncol. 2015 Dec 30:1-2.

[Read More >>](#)

Configuration-dependent presentation of multivalent IL-15:IL-15R α enhances the antigen-specific T cell response and anti-tumor immunity.

Hong E, Usiskin IM, Bergamaschi C, Hanlon DJ, Edelson RL, Justesen S, Pavlakis GN, Flavell RA, Fahmy TM.

J Biol Chem. 2015 Dec 30.

[Read More >>](#)

Pembrolizumab versus docetaxel for previously treated, PD-L1-positive, advanced non-small-cell lung cancer (KEYNOTE-010): a randomised controlled trial.

Herbst RS, Baas P, Kim DW, Felip E, Pérez-Gracia JL, Han JY, Molina J, Kim JH, Arvis CD, Ahn MJ, Majem M, Fidler MJ, de Castro G Jr, Garrido M, Lubiniecki GM, Shentu Y, Im E, Dolled-Filhart M, Garon EB.

Submissions

Please submit your recent publication and grant announcements to:

Renee Gaudette

Director, Public Affairs and Marketing

renee.gaudette@yale.edu

 Forward to a Friend

Lancet. 2015 Dec 18.

[Read More >>](#)

Association of 21-gene recurrence score assay and adjuvant chemotherapy use in the medicare population, 2008-2011.

Su KW, Hall J, Soulos PR, Abu-Khalaf MM, Evans SB, Mougalian SS, Rutter CE, Davidoff AJ, Gross CP.

J Geriatr Oncol. 2015 Dec 15.

[Read More >>](#)

Epithelial-to-Mesenchymal Transition and Cancer Invasiveness: What Can We Learn from Cholangiocarcinoma?

Brivio S, Cadamuro M, Fabris L, Strazzabosco M.

J Clin Med. 2015 Dec 19;4(12):2028-41.

[Read More >>](#)

Melanoma brain metastasis pseudoprogression after pembrolizumab treatment.

Cohen J, Alomari AK, Vortmeyer AO, Jilaveanu LB, Goldberg SB, Mahajan A, Chiang VL, Kluger HM.

Cancer Immunol Res. 2015 Dec 23.

[Read More >>](#)

Financial toxicity in insured patients with multiple myeloma: a cross-sectional pilot study.

Huntington SF, Weiss BM, Vogl DT, Cohen AD, Garfall AL, Mangan PA, Doshi JA, Stadtmauer EA.

Lancet Haematol. 2015 Oct;2(10):e408-16.

[Read More >>](#)

Knowledge, attitudes, and intentions toward fertility awareness and oocyte cryopreservation among obstetrics and gynecology resident physicians.

Yu L, Peterson B, Inhorn MC, Boehm JK, Patrizio P.

Hum Reprod. 2015 Dec 17.

[Read More >>](#)