

October 30, 2020

Announcements

Dr. Michaela Dinan Named Co-Leader of Cancer Prevention and Control

I am proud to announce that Michaela A. Dinan, PhD, has been appointed Co-Leader of the Cancer Prevention and Control Research Program beginning January 1, 2021. Dr. Dinan was also named Associate Professor in the Department of Chronic Disease Epidemiology at the Yale School of Public Health and will also be a core faculty member of the Cancer Outcomes, Public Policy, and Effectiveness Research (COPPER) Center at Yale.



In her new role, Dr. Dinan will be an integral member of the YCC leadership team and will undoubtedly make a profound impact on the great research from our Cancer Prevention and Control Research Program and our Cancer Center. We look forward to her leadership in this important area to help us improve the lives of our cancer patients. Dr. Dinan joins Yale from Duke Cancer Institute/Duke Clinical Research Institute where she was an Associate Professor in the Department of Population Health Sciences within the Department of Medicine, Medical Oncology, and where she also co-led the Patient Experience and Survivorship Focus Area in the Cancer Control and Population Sciences Program. She received her undergraduate degree from the University of Virginia in biology and her PhD from the University of North Carolina at Chapel Hill in health policy and management. Dr. Dinan's research focuses on emerging medical technology in cancer using nationally representative, longitudinal data to examine trends in the evaluation and management of cancer, associated outcomes, and costs. She is currently funded by the National Cancer Institute to study Disparities in the Use of Oral Anticancer Agents in Kidney Cancer.

from the desk of

Charles S. Fuchs, MD, MPH
Director, Yale Cancer Center
and Physician-in-Chief
Smilow Cancer Hospital



Yale
NewHaven
Health
Smilow Cancer
Hospital

Yale **CANCER**
CENTER
A Comprehensive Cancer Center Designated
by the National Cancer Institute

News Center

**Yale Doc Says Lowering Recommended Age For
Colon Screening is Critical Following Rise in
Colorectal Cancer in Younger Patients**



Watch Now

**New COVID-19 Related Genes – Helpful and
Harmful – Found in Massive Screen**

Debra Brandt, DO Announces Departure

It is with very mixed emotions that we share the news that our esteemed friend and colleague, Dr. Debra Brandt, Medical Director of our Smilow Cancer Hospital Care Center in Torrington, will be leaving Smilow for a new leadership opportunity in Florida in December. Debbie officially joined the Yale faculty in 2014, and became Medical Director of our Torrington Care Center in 2015. Debbie has been a pillar of the medical community in Litchfield County since 1998



when she launched her in practice in Torrington, soon after her graduation from Hematology/Oncology Fellowship at Yale. Since 2014, Debbie has been a valued leader and member of our faculty in Smilow and the Cancer Center. Over the past years under Debbie's leadership, our Care Center in Torrington represents the destination center for cancer care and clinical trials for the Northwest population of Connecticut and neighboring regions of New York. Please join us in congratulating Debbie on her new leadership role and thanking her for many contributions to the mission of our Cancer Center and her legacy of accomplishments at YCC and SCH.

Dr. Katherine Harvey will serve as Interim Medical Director for the Care Center following Debbie's departure.

Ray of Hope Fund

In memory of Raymond Lenox, APRN, a colleague and friend who died of pancreatic cancer a few weeks ago, a fund has been established in his name to honor his memory and to be used by patients who are under the care of the Stem Cell Transplant Program at Smilow Cancer Hospital. The funds will help meet the financial needs and obligations necessary to maintain patient well-being during the challenging effects associated with a stem cell/bone marrow transplant. To contribute, please send donations to the Ray of Hope Fund at the YNHH Development Office, PO Box 1849, New Haven, CT 06508, or [online](#).

Radiation Oncology at ASTRO

Our radiation oncology team presented outstanding research from Yale Cancer Center and Smilow Cancer Hospital earlier this week at the virtual American Society for Radiation Oncology annual meeting, highlighting radiation therapy in a changing world. Presentations are available online, and a full list of Yale faculty participation is [available](#).

Smilow Cares Oncology Scholarships

Nominations are open for the 2020 Smilow Cares Oncology Scholarships for our nurses, PCAs, and ACAs who are continuing their



[Read More](#)

Image Processing and Analysis Group Wins International Best Paper Award for 2nd Straight Year



[Watch Now](#)

Video: Learn more about Yale Cancer Center Director and Physician-in-Chief of Smilow Cancer Hospital, Dr. Charles Fuchs



[Watch Now](#)

Müschen Named to Arthur H. and Isabel Bunker Professorship at Yale



[Read More](#)

Positively Pink: Technology Making Mammogram Callbacks Less Frequent



professional education.

[Learn More](#)

Grant Submission Reminders

Please remember to include cancer-related keywords in your grant submissions to maximize the cancer-relevance score for non-NCI funding opportunities. When writing your project terms list, please include cancer keywords. If studying a disease that predisposes to cancer or a basic mechanism that is either integral to cancer or of potential relevance to cancer, mention the link to cancer in the abstract and include keywords. Thank you in advance for your attention to this, and best of luck on your grant submissions.

Yale ENGAGE Series

In conjunction with Yale Cancer Center, the Yale Corporate Strategy and Engagement office presents YALE ENGAGE, an interactive webinar series promoting impactful collaboration between academic experts and industry executives. The next session, scheduled for November 5 at 11am, is focused on Novel Therapeutics and Delivery Systems.

[Learn More](#)

Notables

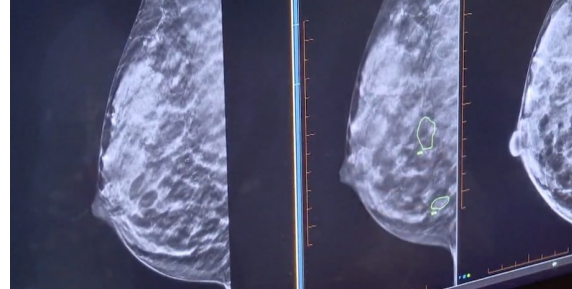
Sanjay Aneja, MD, Assistant Professor of Therapeutic Radiology and a member of the Radiobiology and Radiotherapy Research Program, and his team won the Abstract Award for Neuro-Imaging at this year's **Society for Neuro-Oncology Conference** for "Deep Learning Survival Analysis for Multiple Brain Metastases." The first author is **Enoch Chang, BS**, a Yale Medical Student studying in his lab.

Stavroula Hatzios, PhD, Assistant Professor of Molecular, Cellular and of Developmental Biology and of Chemistry, and a member of the Cancer Microbiology Research Program, received a "Conquer Cancer Now" Award from the **Concern Foundation** for her project, "Connecting Cysteine Oxidation to Cancer Cell Signaling in Infection-associated Cancers."

The **Cancer Signaling Networks Research Program** welcomes **Min Wu, PhD**, Associate Professor of Cell Biology. There are three overlapping areas in Dr. Wu's group that are linked to cancer: phosphoinositide, metabolism, mitosis, and cell size homeostasis. While Dr. Wu's interests are clearly on the basic sciences side of the cancer

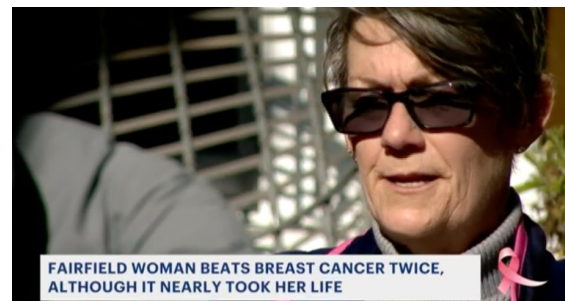


research, her group is addressing long-standing cell biological topics that are central to the mechanistic understanding of mis-regulated cell growth and metabolism. Her program looks forward to interacting with



[Watch Now](#)


'You Can't Give Up Hope' - Fairfield Woman Shares Story of Beating Breast Cancer Twice



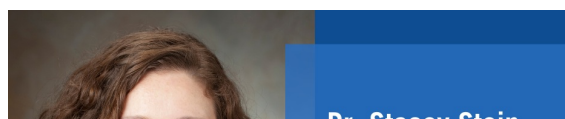
[Watch Now](#)



Join Smilow Cancer Hospital on Facebook

 Like us on Facebook

"In the last ten years, we have made tremendous strides having more treatment options that are more effective for liver cancer." Medical oncologist Dr. Stacey Stein was a recent guest on Yale Cancer Answers with host Dr. Anees Chagpar, and discussed, among many topics, how treatments are evolving for patients with liver cancer.



members of the Cancer Center, and their expertise in cell biology, imaging, and signaling networks will also contribute to the overall program.

Employee Profile: Trina Houle, RN

With the onset of COVID-19, a Supportive Care Unit was created on NP12. Since its inception, Trina Houle, RN, has supported the patients on special unit for end-of-life care in their final hours or days. As a nurse, she finds it to be an especially gratifying opportunity.

“I began my career as an oncology nurse, and was pulled towards working with end-of-life patients,” said Trina. “It’s such a rewarding position to be in as a nurse, and I am so happy that we can now offer these patients a quaint and quiet place away from the noises of machines and hustle and bustle of other floors.”

Trina started as a nurse in surgical oncology and when the opportunity arose, she transferred to the Supportive Care Unit where she has worked since March. She also works with VITAS, an in-patient hospice company. The now six-bed unit is open to all patients and is run by Smilow’s Palliative Care team.

“The Palliative Care team, social workers, chaplain, pharmacist – they all do such a phenomenal job and I have heard nothing but positive feedback from families. End-of-life is different for every patient and every family; the patients have awful diagnoses, but maintain such a positive attitude. When I get to go home every day, I don’t take anything for granted and appreciate every single day.”

In addition to her clinical work, Trina has also been working towards her family Nurse Practitioner degree to become an APRN. Director of the Supportive Care Unit and Adult Inpatient Palliative Care, Dr. Elizabeth Prsic shares, “Trina consistently goes above and beyond in caring for patients and supporting their families and loved ones in the most challenging of times. She finds meaning in her work in the Supportive Care Unit and in providing palliative and end-of-life care along with an interdisciplinary team which includes physicians, nurse practitioners, social workers, chaplains, pharmacist, care management,

and bereavement counselors. She is a true health care hero and an exemplary nurse serving patients in Smilow Cancer Hospital.”

Assistant Patient Services Manager. Brianna Lutz echoes Dr. Prsic’s



Dr. Stacey Stein talks about common causes, screening, and treatments available for liver cancer on Yale Cancer Answers

[Read More](#)

Dr. Mitchell Clark was recently appointed as Assistant Professor of Obstetrics, Gynecology & Reproductive Sciences and will be caring for women with gynecological malignancies at the Smilow Cancer Hospital Care Center in Waterford. Dr. Clark will partner with Elena Ratner, MD, Associate Professor of Obstetrics, Gynecology & Reproductive Sciences and Co-Chief for the section of Gynecologic Oncology. His clinical focus is on high-risk ovarian cancer patients, and sex and intimacy after a cancer diagnosis.

Welcome to Smilow Cancer Hospital Care Center at Waterford



Dr. Mitchell Clark, Assistant Professor of Obstetrics, Gynecology & Reproductive Sciences

YaleNewHavenHealth
Smilow Cancer Hospital

Yale
CANCER
CENTER
A Comprehensive Cancer Center Designated
by the National Cancer Institute

[Read More](#)

Congratulations to Robert Legare, MD, Associate Clinical Professor of Medicine (Medical Oncology) and Medical Director of the Smilow Cancer Hospital Care Centers in Westerly and Waterford, who was selected as the recipient of the 2020 Dr. Joseph DiMase Memorial Healthcare Professional Award. Dr. Joseph DiMase was the founder of Screening Colonoscopies for Uninsured Persons (SCUP)

program in Rhode Island, which served hundreds of uninsured Rhode Islanders, ultimately saved lives, and will continue to screen those at risk for colorectal cancer. Dr. Legare has always been a

sentiments saying, “Trina consistently goes above and beyond for her patients on the Supportive Care Unit to ensure they receive holistic care. She creates special moments for them, including coming in on her day off to coordinate birthday celebrations for patients in their final days. She is an exemplary nurse and has truly been the backbone of the Supportive Care Unit.”

Recent Publications

Wu, Y. L., Tsuboi, M., He, J., John, T., Grohe, C., Majem, M., Goldman, J. W., Laktionov, K., Kim, S. W., Kato, T., Vu, H. V., Lu, S., Lee, K. Y., Akewanlop, C., Yu, C. J., de Marinis, F., Bonanno, L., Domine, M., Shepherd, F. A., Zeng, L., Herbst, RS., ADAURA Investigators (2020). **Osimertinib in Resected EGFR-Mutated Non-Small-Cell Lung Cancer.**

The New England Journal of Medicine, 383(18), 1711–1723.

[Read More](#)

Nicole C. Deziel, Joshua L. Warren, Huang Huang, Haoran Zhou, Andreas Sjodin, Yawei Zhang.

Exposure to polychlorinated biphenyls and organochlorine pesticides and thyroid cancer in Connecticut women.

Environmental Research, Volume 192, 2021, 110333, ISSN 0013-9351.

[Read More](#)

Lu, M., Ma, X., Reichard, N., Terry, D. S., Arthos, J., Smith, A. B., 3rd, Sodroski, J. G., Blanchard, S. C., & Mothes, W. (2020).

"Shedding-Resistant HIV-1 Envelope Glycoproteins Adopt Downstream Conformations That Remain Responsive to Conformation-Preferring Ligands".

Journal of virology, 94(22), e01661-20.

[Read More](#)

Jiang, R., Marquez, J., Tower, J. I., Jacobs, D., Chen, W., Mehra, S., Prasad, M. L., & Judson, B. L. (2020).

Sequencing of Sclerosing Microcystic Adenocarcinoma Identifies Mutational Burden and Somatic Variants Associated With Tumorigenesis.

Anticancer research, 40(11), 6375–6379.

[Read More](#)

Tang, S., Liu, F., Li, Y., Zhao, L., Wang, X., Khan, S. A., Chen, Y., & Zhang, Y. (2020). Treatment Selection and Survival Outcomes in

Locally Advanced Proximal Gastric Cancer: A National Cancer Data Base Analysis.

Frontiers in oncology, 10, 537051.

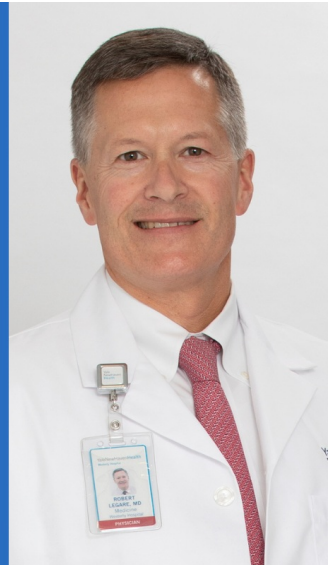
[Read More](#)

Hong, C. S., Floney, G., Fisayo, A., An, Y., Gopal, P. P., Omuro, A., Pointdujour-Lim, R., Erson-Omay, E. Z., & Omay, S. B. (2020).

Genetic characterization of an aggressive optic nerve pilocytic glioma.

champion for promoting cancer prevention, improving detection, increasing access to health and social services and overall reduction in the burden of cancer on patients, he embodies the essence of this award.

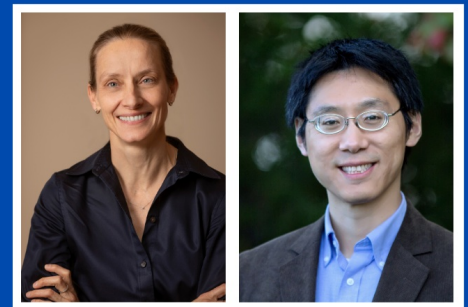
Dr. Robert Legare named recipient of the 2020 Dr. Joseph DiMase Memorial Healthcare Professional Award



[Read More](#)

The National Institutes of Health has awarded a Research Project Cooperative Agreement Grant to Yale Cancer Center. The 2-year, \$1.4 million U01 award, led by Stephanie Halene, MD, PhD, Associate Professor of Medicine (Hematology) and Interim Chief of Hematology, and Rong Fan, PhD, Professor of Biomedical Engineering, will fund immuno-serological assays for monitoring COVID-19 in patients with hematologic malignancies.

Stephanie Halene, MD, PhD, and Rong Fan, PhD, receive NIH Grant



YaleNewHavenHealth
Smilow Cancer Hospital

Yale
CANCER
CENTER
A Comprehensive Cancer Center Designated
by the National Cancer Institute

[Read More](#)

Welcome to George Yavorek, MD, Instructor (Clinical) of Surgery, who is now caring for patients with gastrointestinal cancers at the Smilow Cancer Hospital Care Center at Waterford and performing

Brain tumor pathology, 10.1007/s10014-020-00383-x. Advance online publication.

[Read More](#)

Stark, S., Wang, C., Savic, L. J., Letzen, B., Schobert, I., Miszczuk, M., Murali, N., Oestmann, P., Gebauer, B., Lin, M., Duncan, J., Schlachter, T., & Chapiro, J. (2020). **Automated feature quantification of Lipiodol as imaging biomarker to predict therapeutic efficacy of conventional transarterial chemoembolization of liver cancer.**

Scientific reports, 10(1), 18026.

[Read More](#)

Zhang, J., Liu, J., McGillivray, P., Yi, C., Lochovsky, L., Lee, D., & Gerstein, M. (2020). NIMBus: a negative binomial regression based **Integrative Method for mutation Burden Analysis.**

BMC bioinformatics, 21(1), 474.

[Read More](#)

Clark, P., Gee, G. V., Albright, B. S., Assetta, B., Han, Y., Atwood, W. J., & DiMaio, D. (2020).

Phosphoinositide 3'-Kinase γ Facilitates Polyomavirus Infection.

Viruses, 12(10), E1190.

[Read More](#)

Boffa, D. J., Judson, B. L., Billingsley, K. G., Del Rossi, E., Hindinger, K., Walters, S., Ermer, T., Ratner, E., Mitchell, M. R., Laurans, M. S., Johnson, D. C., Yoo, P. S., Morton, J. M., Zurich, H. B., Davis, K., & Ahuja, N. (2020).

Results of COVID-Minimal Surgical Pathway During Surge-Phase of COVID-19 Pandemic.

Annals of surgery, 10.1097/SLA.0000000000004455. Advance online publication.

[Read More](#)

Jacobs, D., Olino, K., Park, H. S., Clune, J., Cheraghlou, S., Girardi, M., Burtness, B., Kluger, H., & Judson, B. L. (2020).

Primary Treatment Selection for Clinically Node-Negative Merkel Cell Carcinoma of the Head and Neck.

Otolaryngology--head and neck surgery : official journal of American Academy of Otolaryngology-Head and Neck Surgery, 194599820967001. Advance online publication.

[Read More](#)

Ginter, P. S., Idress, R., D'Alfonso, T. M., Fineberg, S., Jaffer, S., Sattar, A. K., Chagpar, A., Wilson, P., & Harigopal, M. (2020).

Histologic grading of breast carcinoma: a multi-institution study of interobserver variation using virtual microscopy.

Modern pathology : an official journal of the United States and Canadian Academy of Pathology, Inc, 10.1038/s41379-020-00698-2.

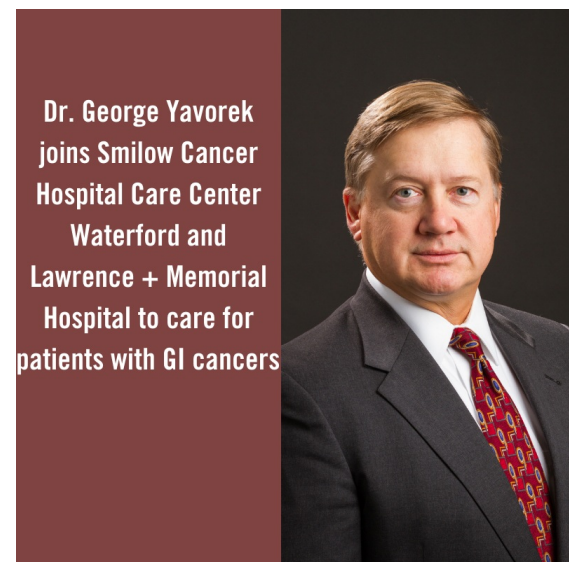
Advance online publication.

[Read More](#)

Bewersdorf, J. P., & Zeidan, A. M. (2020).

Novel and combination therapies for polycythemia vera and essential thrombocythemia: the dawn of a new era

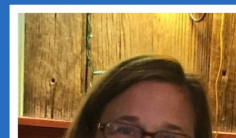
surgery at Lawrence + Memorial Hospital. Dr. Yavorek has over 25 years of experience in colorectal surgery, providing surgical and nonsurgical care to our patients. Dr. Yavorek specializes in benign and malignant diseases of the colon, rectum, and anus and has a special interest in robotic surgery for colon and rectal cancers.



[Read More](#)

Patti Casper, RN, cares for our patients who need treatment for brain metastasis either through surgery or through the Gamma Knife Program, under the leadership of Dr. Veronica Chiang. Patti has been working alongside Dr. Chiang and her team for over a decade, and the services they provide to their patients are seamless because of Patti's dedication and outstanding care. Patti goes above and beyond to ensure every patient's treatment course is well planned. She takes the time to help the patients understanding their procedure and coordinates their care with the appropriate multidisciplinary cancer teams, while ensuring that all their questions are answered throughout the entire process. Patti is a true #SmilowStar!

Smilow Stars



Thank you,
Patti Casper, RN

essential thrombocythemia: the dawn of a new era.
Expert review of hematology, 10.1080/17474086.2020.1839887.

Advance online publication.

[Read More](#)

Chau, I., Penel, N., Soriano, A. O., Arkenau, H. T., Cultrera, J., Santana-Davila, R., Calvo, E., Le Tourneau, C., Zender, L., Bendell, J. C., Mi, G., Gao, L., McNeely, S. C., Oliveira, J. M., Ferry, D., Herbst, R. S., & Fuchs, C. S. (2020).

Ramucirumab in Combination with Pembrolizumab in Treatment-Naïve Advanced Gastric or GEJ Adenocarcinoma: Safety and Antitumor Activity from the Phase 1a/b JVDF Trial.

Cancers, 12(10), E2985.

[Read more](#)

Xu, X., Soulos, P. R., Herrin, J., Wang, S. Y., Pollack, C. E., Evans, S. B., Yu, J. B., & Gross, C. P. (2020).

Physician trajectories of abandoning long-course breast radiotherapy and their cost impact.

Health services research, 10.1111/1475-6773.13572. Advance online publication.

[Read More](#)

Herbst, R. S., Arkenau, H. T., Bendell, J., Arrowsmith, E., Wermke, M., Soriano, A., Penel, N., Santana-Davila, R., Bischoff, H., Chau, I., Mi, G., Wang, H., Rasmussen, E., Ferry, D., Chao, B. H., & Paz-Ares, L. (2020).

Phase 1 Expansion Cohort of Ramucirumab Plus Pembrolizumab in Advanced Treatment-Naïve Non-Small Cell Lung Cancer.

Journal of thoracic oncology : official publication of the International Association for the Study of Lung Cancer, S1556-0864(20)30809-1.

Advance online publication.

[Read More](#)

Deziel, N. C., Warren, J. L., Huang, H., Zhou, H., Sjodin, A., & Zhang, Y. (2020). **Exposure to polychlorinated biphenyls and organochlorine pesticides and thyroid cancer in connecticut women.**

Environmental research, 192, 110333. Advance online publication.

[Read More](#)

Burnley, A., Bold, K. W., Kong, G., Wu, R., & Krishnan-Sarin, S. (2020). **E-cigarette use perceptions that differentiate e-cigarette susceptibility and use among high school students.**

The American journal of drug and alcohol abuse, 1–9. Advance online publication.

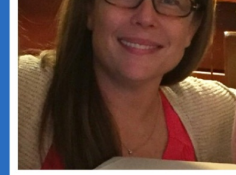
[Read More](#)

Olivero, C. E., & Dimitrova, N. (2020).

Identification and characterization of functional long noncoding RNAs in cancer.

FASEB journal : official publication of the Federation of American Societies for Experimental Biology, 10.1096/fj.202001951R. Advance online publication.

[Read More](#)



**Patti Casper, RN,
Gamma Knife Program,
at Smilow Cancer
Hospital!**

YaleNewHavenHealth
Smilow Cancer Hospital

Yale CANCER
CENTER
A Comprehensive Cancer Center Designated
by the National Cancer Institute

[Read More](#)

The Liver Cancer Program at Smilow Cancer Hospital offers an entire spectrum of therapies for primary liver cancers, also known as hepatocellular carcinoma and choangiocarcinoma. While the percentage of Americans who are diagnosed with liver cancer has been rising for several decades, new treatments and improved surgical techniques have kept mortality from the disease from increasing. Our team is dedicated to diagnosing liver cancer early, when treatment is optimal, and to discovering new, more effective treatment options for our patients in Connecticut and beyond.



[Read More](#)

Congratulations to Dr. Craig Crews who was awarded the 2020 Heinrich Wieland Prize for his pioneering work on PROTACS and targeted protein degradation for cancer treatment.



Datta, R., Topal, J., McManus, D., Sanft, T., Dembry, L. M., Morrison, L. J., Quagliarello, V., & Juthani-Mehta, M. (2020).

Education needed to improve antimicrobial use during end-of-life care of older adults with advanced cancer: A cross-sectional survey.

Palliative medicine, 269216320956811. Advance online publication.

[Read More](#)

Funding and Award Opportunities

Nominations for Annual YCC Awards

Yale Cancer Center is pleased to announce our call for nominations for our annual awards in the areas of excellence in research, teaching, mentorship, and clinical care. Each award will be announced at the Yale Cancer Center Conclave in January. The nomination deadline for all awards (unless otherwise noted) is **Monday, November 2nd**.

[Learn More](#)

Innovative Research in Cancer Nanotechnology (IRCN) (R01 Clinical Trial Not Allowed)

□ This FOA encourages applications promoting transformative discoveries in cancer biology and/or oncology through the use of nanotechnology.

Application Deadline: November 4, 2020

[Read More](#)

NCI Outstanding Investigator Award (R35)

The objective of the NCI OIA is to provide long-term support to accomplished investigators with outstanding records of cancer research productivity who propose to conduct exceptional research.

Application Deadline: November 6, 2020

[Read More](#)

NCI Pediatric In Vivo Testing Program (U01)

This FOA is for Research Teams to form the *NCI Pediatric in Vivo Testing Program* (henceforth termed the Ped-In Vivo-TP).

Application Deadline: November 9, 2020

[Read More](#)

Pershing Square Sohn Prize for Young Investigators in Cancer Research

The Pershing Square Sohn Prize for Young Investigators in Cancer Research provides greater New York City area- based early career scientists the freedom to take risks and pursue their boldest research at a stage when traditional funding is lacking.

Letter of Intent Due: November 9, 2020

[Read More](#)

3D Technologies to Accelerate HTAN Atlas Building Efforts (UH2)

Through this FOA, the NCI, as a part of its Beau Biden Cancer Moonshot Initiative, invites submission of applications requesting support for projects that will accelerate cancer research.

Application Deadline: November 9, 2020



[Read More](#)

Follow Yale Cancer Center on Twitter

Follow us on 



"There are some hypotheses that it may be due to increased obesity in the population or low fiber diet."— @PamelaKunzMD tells @WTNH why #Colorectal screening should be lowered to age 45 due to more cases in younger adults.



"If we want to do the best science we can, we need a diverse set of people." — .@YaleCancer @VirusesImmunity Dr. Akiko Iwasaki talking to @statnews about her career, mentorship, influence, and power imbalances in medicine.



Interested in learning more about .@SmilowCancer and the work being done here in #CARTcell therapy? 11/5 is your chance to join us and learn about the role #oncology nurses play.



Tune in at 2pm to virtual#ASTRO20! @VikramJairamMD & @RoyHDecker report on research showing "Post-Operative #RadiationTherapy for #NSCLC: A Comparison of Radiation Therapy Techniques."



At virtual #ASTRO20, @Enoch_Chang presents new research with SanjayAnejaMD showing Deep Learning Survival Analysis for Brain Metastases treated with #StereotacticRadiosurgery at 11:30am.



At 11:30am today, new research for predicting outcomes following SBRT treatment for early-stage #NSCLC by .@SanjayAnejaMD will be highlighted at virtual #ASTRO20.



Join us today at Noon for @YaleCancer Virtual Grand Rounds. Dr. Jason Cai and Dr. Zachary Corbin will talk about developments in #BrainTumor imaging.



Join Dr. Veronica Chien at 4:30pm today

Application Deadline: November 9, 2020

Read More

2020 V Scholar Grant for Black/African American Cancer Researchers

Only researchers who self-identify as Black/African Americans are eligible to apply for this V Scholar grant opportunity in 2020. This call is open to research in all adult cancer types.

Internal Application Deadline: November 10, 2020

Read More

Tobacco Control Policies to Promote Health Equity (R01 and R21)

The purpose of these FOAs are to support observational or intervention research focused on reducing disparities in tobacco use and secondhand smoke (SHS) exposure in the U.S.

Application Deadline: November 12, 2020

Read More

Genomic Data Analysis Network: Genomic Data Center (U24)

This FOA is designed to support genomic programs managed by the Center for Cancer Genomics (CCG). The overall goal of all CCG programs is to help elucidate the mechanisms of cancer initiation and evolution, as well as resistance to therapy by means of genomic characterization of well-annotated, high quality tumor samples.

Application Deadline: November 12, 2020

Read More

Core Infrastructure Support for Cancer Epidemiology Cohorts (U01 Clinical Trial Not Allowed)

Through this FOA, the NCI encourages grant applications for support of the core functions of Cancer Epidemiology Cohorts (CECs), as well as methodological research. This FOA is intended to support the maintenance of existing CECs infrastructure and resource sharing with broader scientific communities.

Application Deadline: November 12, 2020

Read More

DoD Rare Cancers Research Program

These FOAs aim to greatly improve outcomes for people with rare cancer through discovery and community building, and expansion of knowledge across the cancer landscape.

- **Concept Award – Letter of Intent Due:** November 12, 2020
- **Idea Development Award – Letter of Intent Due:** November 12, 2020
- **Resource and Community Development Award – Letter of Intent Due:** November 12, 2020


Read More


Cancer Research Institute Technology Impact Award


The program is designed to encourage collaboration between technology developers and clinical cancer immunologists. The ultimate aim of this program is to advance technologies that can speed up the entire field's efforts in addressing one of the most defining challenges of our time—developing immunotherapies that are effective for all cancer patients.


Letter of Intent Due: November 15, 2020


Read More


 Join Dr. Veronica Chiang at 4:30pm today reporting research at virtual #ASTRO20, "Outcomes of Stereotactic Radiosurgery & #Immunotherapy in #RenalCellCancer with Brain Metastases."


 Tuning in to virtual #ASTRO20? At 4:30pm today .@HenryParkMD and Victor Lee share new research concerning "Nationwide Patterns of Hemorrhagic Stroke among Patients Hospitalized with Brain Metastases."


 "When we presented the data, everybody got excited because we saw high levels of several proteins that pointed to endothelial cell injury, activation, & dysfunction."—Dr. Alfred Lee talking to @nih_nhlbi about #COVID19 research


 Listen in today at 2pm to research led by .@XRT_GabrielleWP and @kim_johung @ASTRO20 "The Modern Landscape of Gastrointestinal Clinical Trials and Predictors for Success."


 Virtual #ASTRO20 begins this weekend! Check out the latest research and treatment advances being presented by .@YaleCancer @SmilowCancer scientists including Dr. Suzanne Evans @JamesbYu @SanjayAnejaMD @HenryParkMD and @RanjitBindra.

 It's not too late to register to learn the latest clinical advancements in #cancer #immunotherapy and earn free CE. Join DrRoyHerbstYale for an upcoming @sitcancer #LearnACI live virtual program on Oct. 28th.

 Thank you .@NitaAhujaMD for the excellent keynote on retroperitoneal sarcomas and discussion with @DrRoyHerbstYale at our annual @ASCO Review #YaleASCO20.

 .@DrRoyHerbstYale kicks off our annual Review of Advances in Oncology: Highlights from the @ASCO Annual Meeting 2020" virtually.

 Congratulations to Stavroula Hatzios on her Conquer Cancer Now grant award from @ConcernFdn to research infection-associated #cancers.

 Welcome Dr. Michaela Dinan named Co-Leader of the @YaleCancer #CancerPrevention & Control Research Program.

[Read More](#)

Yale Cancer Center Postdoctoral Career Transition Awards

These 1-year awards will support outstanding senior trainees that have demonstrated exceptional productivity at the postdoctoral level and are ready to transition into the next stage of their careers as independent cancer researchers.

Internal Application Deadline: November 15, 2020

[Read More](#)

The NCI Predoctoral to Postdoctoral Fellow Transition Award (F99/K00)

The purpose of the NCI Predoctoral to Postdoctoral Fellow Transition Award (F99/K00) is to encourage and retain outstanding graduate students recognized by their institutions for their high potential and strong interest in pursuing careers as independent cancer researchers.

Application Deadline: November 18, 2020

[Read More](#)

Limited Competition: Childhood Cancer Survivor Study (U24 Clinical Trial Required)

The purpose of this limited competition FOA is to continue support for the Childhood Cancer Survivor Study as a resource enabling broad studies on the long-term effects of cancer and its associated therapies on survivors of pediatric and adolescent cancers.

Application Deadline: November 18, 2020

[Read More](#)

Glioblastoma Therapeutics Network (U19)

The overall goal of this FOA is to improve the treatment of adult glioblastoma (GBM) by developing novel effective agents that can cross the blood brain barrier (BBB) and testing them in the clinic,

Application Deadline: November 19, 2020

[Read More](#)

Lion Heart Fund for Cancer Research

The Lion Hearts are committed to finding a cure for cancer, and breast cancer in particular. In keeping with this mission, they understand the value of funding bright young minds – providing them with pilot funding to kick-start high potential research projects, and/or supporting innovative work requiring bridge funding.

Application Deadline: November 22, 2020

[Read More](#)

2020 “Smilow Cares” Oncology Scholarships

RN/PCA/ACA staff that are continuing their professional education may apply. 10 new additional scholarships are available!

Nomination Deadline: November 25, 2020

[Read More](#)

AACR Clinical Oncology Research (CORE) Training Fellowship

This award is designed to provide an effective industry-academic clinical practicum with a unique training opportunity to develop academic clinicians in drug development.

Application Deadline: November 30, 2020

“Dr. Dinan will help advance our mission to identify the causes of human cancers.”

Calendar

12th Annual Yale Stem Cell Center Virtual Research Retreat

October 30, 2020; 9:00 AM

Haifan Lin, PhD | InHyun Park, PhD | Shangqin Guo, PhD | Stephanie Halene, MD, PhD | Qin Yan, PhD | Qiao Wu | Xiongzhuo Tang | Phan Duy | Juergen A. Knoblich | Kaelyn Sumigray, PhD | Zachary Smith, PhD | Berna Sozen, PhD | Andrew Xiao, PhD | Yiqun Jiang | Nils Neuenkirchen | Tianshu Liu | Shuangshuang Du | Mandar Muzumdar, MD | Nikhil Joshi, PhD | Anne Eichmann, PhD | Jeffrey Ishizuka, mD, DPhil | Haoyang Wei | Dingyao Zhang | Kaiti Duan | Charles L. Sawyers, MD | Diane Krause, MD, PhD

[Learn More](#)

Smilow Cancer Hospital Care Center at Greenwich Presents

October 31, 2020; 8:00 AM

Breast Center Educational Day - Lymphatics, Lymphocytes, Lymphoma and Breast Implants
Barbara Ward, MD | Leo Otake, MD | D. Barry Boyd, MD | Janet Freedman, MD | Andreas Lamelas, MD

[Learn More](#)

Yale Cancer Answers

November 1; 7:30 PM

NPR

Breast Cancer Outcomes

Elizabeth Berger, MD, MS

[Learn More](#)

Berlin Science Week

November 2; 10:00 AM

“Starting Up Science: From Lab to Therapy” with 2020 Heinrich Wieland Prize laureate Craig M.

Crews

Craig Crews, PhD

[Learn More](#)

Epigenetics Interest Group Seminar

November 2; 12:00 PM

Planarian PIWI Guides Tissue Specific Chromatin Reorganization During Cell Differentiation

Danyan Li

[Learn More](#)

Pathology Research in Progress Talk

November 2; 9:30 AM

Application Deadline: November 30, 2020

Read More

Investigation of the Transmission of Kaposi Sarcoma-Associated Herpesvirus (KSHV) (R01)

Through this FOA, the NCI intends to advance our understanding of: the modes of transmission of Kaposi sarcoma-associated herpesvirus (KSHV), also called human herpesvirus-8 (HHV-8); the biology of the initial steps of infection; and the risk factors for infection.

Application Deadline: December 15, 2020

Read More

Alex's Lemonade Stand RUNX1 Early Career Investigator Grant

The RUNX1 Early Career Investigator grant is a 3-year award designed to fund research in strategies leading to the development of therapies to prevent the transition from pre-leukemia to leukemia for patients with RUNX1-FPD.

Application Deadline: December 16, 2020

Read More

2021 K12 Immuno-Oncology Training Program (IOTP) Scholar Awards

We are pleased to solicit applications for the Yale Cancer Center (YCC) K12 Calabresi Immuno-Oncology Training Program (IOTP) Scholar Award for junior faculty to enhance research skills beyond the training provided during graduate and postgraduate training.

Application Deadline: January 4, 2021

IOTP Award Instructions

IOTP Award Application

NCI Research Specialist Awards

- Core-Based Award: **Application Deadline** - January 4, 2021
- This FOA invites grant applications in any area of NCI-funded cancer research. This FOA is specifically for core/shared resource/central scientific support scientists.

Laboratory-Based Award: **Application Deadline** - January 4, 2021

This FOA invites grant applications in any area of NCI-funded cancer research. This FOA is specifically for laboratory-based scientists.

Read More

Collaborative Approaches to Engineer Biology for Cancer Applications (U01)

This FOA invites applications to develop and apply innovative synthetic biology approaches to address challenges across the spectrum of

cancer research.

Application Deadline: January 15, 2021

Read More

Specialized Programs of Research Excellence (SPOREs) in Human Cancers for Years 2021, 2022, and 2023 (P50)

Through this FOA, the NCI and National Institute of Dental and Craniofacial Research (NIDCR) invite applications for P50 Research Center Grants for Specialized Programs of Research Excellence (SPORE)

Application Deadline: January 25, 2021

November 3; 9:30 AM

Anna Arnal-Estape, PhD, BS & Lok Hei Chan

Learn More

Yale Cancer Center Grand Rounds/John Murren, MD Memorial Lecture

November 3; 12:00 PM

15 Years of Advances in EGFR Mutant Lung Cancer

Heather Wakelee, MD

Learn More

Pulmonary, Critical Care and Sleep Medicine Grand Rounds

November 4; 3:00 PM

Lung Cancer Screening: It's Time

Lynn Tanoue, MD, MBA

Learn More

Yale Cancer Center Seminar

November 4; 3:30 PM

Expanding the Armamentarium for Patients with Triple Negative Breast Cancer

Foluso Olabisi (Bisi) Ademuyiwa, MD, MPH, MSCI

Learn More

Institutional Perspectives in Cancer Presented by OncoLive

November 4; 5:30 PM

Daniel P. Petrylak, MD

Learn More

Yale Engage Cancer Series Presented by Corporate Strategy and Engagement Office, OCR, and Yale Cancer Center

November 5; 11:00 AM

Novel Therapeutics & Delivery Systems

Ranjit S. Bindra, MD, PhD | Sidi Chen, PhD | Craig

Crews, PhD | Faye Rogers, PhD

Learn More

Pathology Grand Rounds

November 5; 12:30 PM

Magee Equations and Magee Decision Algorithm: Safe, Effective, and Underutilized

Rohit Bhargava, MD

Learn More

Cancer Genetics and Prevention Program

November 5; 2:30 PM

Addressing Issues Facing Transgender and Gender Non-Conforming in Genetic Counseling

Alexandra McClellan, MS, CGC

Learn More

Smilow Cancer Hospital Presents

November 5; 5:00 PM

Application Deadline: January 25, 2021

[Read More](#)

New Cohorts for Environmental Exposures and Cancer Risk (CEECR) (UG3/UH3/U24)

Through this FOA, the NCI and NIEHS invite applications to support innovative scientific research in new prospective cohorts that addresses knowledge gaps in cancer etiology and carcinogenesis processes with a focus on environmental exposures.

Application Deadline: January 29, 2021

[Read More](#)

Utilizing In Vitro Functional Genomics Advances for Gene-Environment (G x E) Discovery and Validation (R01)

The purpose of this FOA is to solicit applications that fully integrate recent innovative advances of in vitro functional genomics tools/technologies and approaches for environmental health and toxicology research. The overall goal of this NIEHS led initiative is to generate proof-of-principle studies incorporating these new in vitro approaches, together with well characterized exposures, to further our understanding of gene-environment (G x E) interactions in complex human disorders.

Application Deadline: February 1, 2021

[Read More](#)

Clinical Translation of Activated Optical Fluorescence Methods and Technologies for Sensitive Cancer Detection in Vivo (R01)

The purpose of this FOA is to bring a highly sensitive imaging technology capable of detecting very small (1-3 mm³) tumors *in vivo* to clinical utility.

Application Deadline: February 10, 2021

[Read More](#)

Assay Validation of High Quality Markers for Clinical Studies in Cancer (UH2/UH3)

Through these FOAs, the NCI invites applications to support the validation of molecular/cellular/imaging markers and assays for cancer detection, diagnosis, prognosis, monitoring, and prediction of response or resistance to treatment, as well as markers for cancer prevention and control.

Application Deadline: February 18, 2021

[Read More](#)

JH Milstone Fund 2021

This FOA supports early stage investigators and innovative research and education in thrombosis, thrombolysis and hemostasis. Proposals may focus on any aspect of thrombosis, thrombolysis and hemostasis – including biochemistry, genetics, clinical evaluation and testing, quality improvement and treatment. Please contact richard.carr@yale.edu for more information.

Letter of Intent Due: March 1, 2021

Cancer Grand Challenges Program

The NCI and Cancer Research UK (CRUK) are partnering to fund the Cancer Grand Challenges program. Cancer Grand Challenges will fund high quality, multidisciplinary research to address the most

November 5; 5:30 PM

A Patient's Journey through CAR-T

Kylie Kuck, MSN, AGNS-BC, CCTN & Katrina Bezak, MS, MBA, APRN, FNP-BC

[Learn More](#)

Yale Cancer Answers

November 8; 7:30 PM

NPR

Lung Cancer Awareness

Sarah Goldberg, MD, MPH

[Learn More](#)

The Tom Ficklin Radio Show featuring Dr.

Marcella Nunez-Smith and Dr. Roy S. Herbst

November 9; 11:00 AM

Marcella Nunez, MD, MHS & Roy S. Herbst, MD, PhD

[Learn More](#)

Yale Cancer Center Grand Rounds

November 10; 12:00 PM

Jeffrey Ishizuka, MD, DPhil & Robert Bona, MD

[Learn More](#)

YSPH Seminar in Chronic Disease Epidemiology

November 10; 12:00 PM

Nutrition, Metabolomics and Cancer

Mary Playdon, PhD, MPH

[Learn More](#)

Bereavement Seminar

November 11; 9:30 AM

Hope for the Holidays

[Learn More](#)

Pathology Grand Rounds

November 12; 12:30 PM

Novel Tumor and Immune Signals to Guide Optimal Anti-Cancer Immunotherapy

Kurt Schalper, MD, PhD

[Learn More](#)

Cancer Genetics and Prevention Program

November 12; 2:30 PM

[Learn More](#)

Submissions

Please submit your recent publications, awards, and grant announcements to:

[Renee Gaudette](#)

Director, Public Affairs and Communications

tund novel ideas by multidisciplinary research teams from around the world that offer the potential to advance bold cancer research and improve outcomes for people affected by cancer. These nine challenges are aimed at solving complex problems in cancer research, which, if solved, could have a transformative impact towards progress.

Application Deadline: April 22, 2021

[Read More](#)