

DirectConnect

Inside Yale Cancer Center

January 13, 2023

Dear Colleagues,

Happy New Year! Last week, I was thrilled to host our first in-person Yale Cancer Center Annual Conclave since 2020. The event has been virtual each of the past two years, and it was clear that all of you were excited to come together in-person. We recognized the scientific and clinical accomplishments of our colleagues over the past year. In truth, the awards represented the tip of the iceberg—a very small proportion of the tremendous talent that surrounds us every day in YCC/Smilow. Throughout the evening, each presenter and awardee showcased the unique strengths of our clinical, research, and education programs which in turn serve our overarching mission. The comradery and spirit in the room was palpable, and it was a pleasure to see so many faculty and members of our leadership team in attendance. I am humbled by the tremendous work that is carried out at YCC/Smilow and honored to be working with all of you.

Conclave was special, but we all know that there is still much work to be done. On Monday, we celebrate Martin Luther King, Jr., Day. I hope you have a peaceful and thoughtful day. MLK Day serves as a reminder—not that we should need one—of the inequities in our society and specifically in healthcare. At Yale and Smilow, we will continue to strive to decrease cancer care disparities. This effort is a critical part of our mission, and you will continue to hear about efforts that we are undertaking to diminish these disparities in Connecticut and beyond.

Eric

Yale Cancer Center Conclave Award Recipients

Eric P. Winer, MD

Director, Yale Cancer Center

Physician-in-Chief, Smilow Cancer Network

Yale
NewHaven
Health
Smilow Cancer
Hospital

Yale CANCER CENTER
A Comprehensive Cancer Center Designated
by the National Cancer Institute

News Center



**Yale Cancer Center Research Helps
Expand NCCN Guidelines for Ovarian
Cancer**



[Read More](#)



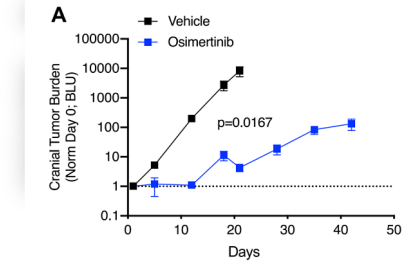
Daniel C. DiMaio, MD, PhD, was presented with the **Yale Cancer Center Lifetime Achievement Award** by Dr. Eric Winer. Dr. DiMaio, the Waldemar Von Zedtwitz Professor of Genetics and Professor of Molecular Biophysics and Biochemistry and of Therapeutic Radiology, was recruited to Yale in 1983 by Dr. Sherman Weissman and Leon Rosenberg. He has served on the faculty and in leadership roles at Yale School of Medicine for nearly 40 years and as an advisor and mentor to countless students, graduate students, and faculty.

In 2020, Dr. DiMaio received an Outstanding Investigator Award from the National Cancer Institute for his studies of human papillomaviruses. Working with Drs. George Miller and Joan Steitz, Dr. DiMaio was the Principal Investigator of the longest running program project grant in Yale School of Medicine history. His leadership in the Cancer Center has helped to support and advise nine Yale Cancer Center directors.

Dr. Winer commented on Dr. DiMaio's "amazing judgment, and direct, honest, and kind manner" in his presenting remarks. Dr. DiMaio accepted the award by recognizing many of the people who supported his career, including his wife Miriam DiMaio, and family, Sherman Weissman, George Miller, Joan Steitz, Don Engelman, Jan Zulkowski, his assistant for over 30 years, David Stern, Ed Snyder, Melinda Irwin, and Roy Herbst, along with the students, fellows, and staff he worked closely with throughout his career.

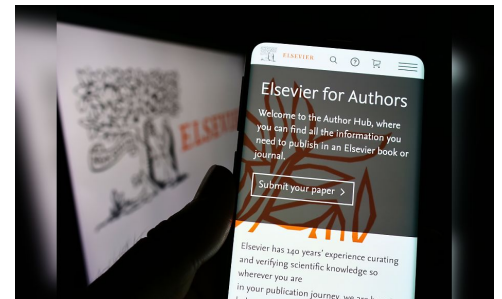


Link Between Drug Resistance and Central Nervous System Relapse



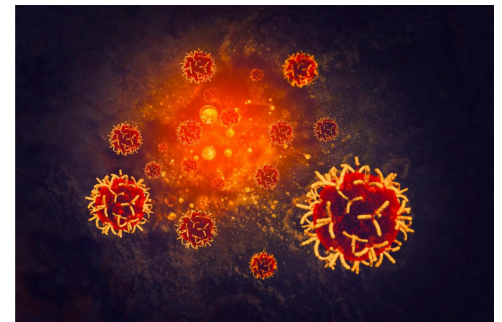
[Read More](#)

Introducing Jot — a new open-source tool that help researchers with journal selection



[Read More](#)

Shocking Yale Research: Common Nutrient Found To Aid Survival of Cancer-Causing Bacterium



[Read More](#)

Finding an Edge: New Monarch, ION

systems may detect lung cancer sooner





The **Yale Cancer Center Awards for Excellence in Clinical Care** were presented by Kevin Billingsley, MD, MBA, FACS, to two outstanding physicians at Smilow Cancer Hospital: **Manju Prasad, MD, MBBS**, Professor of Pathology and Director of the Head & Neck and Endocrine Pathology Program, and **Saral Mehra, MD, MBA, FACS**, Associate Professor of Surgery (Otolaryngology) and Section Chief, Head and Neck Surgery. Dr. Prasad and Dr. Mehra were recognized by Dr. Billingsley for “the strength of their partnership and teamwork, which is reflected in the care of their patients and creates a foundation of excellence and elevates head and neck cancer care at Smilow Cancer Hospital to world-class care.” Dr. Prasad is internationally known for her expertise in the diagnosis of head and neck malignancies and leads the H&N fellowship program where students seek her mentorship from all over the world. Dr. Mehra was described as “a brilliant surgical technician, while a warm and thoughtful leader for clinicians and colleagues.”



The **Ruth McCorkle Oncology Advanced Practice Provider (APP) Award** was presented by Kim Slusser, MSN, RN, CHPN, NEA-BC, Vice President for Patient Services at Smilow Cancer Hospital, and Vanna Dest, APRN, Senior Program Manager of the Oncology Advanced Practice Providers at Smilow Cancer Hospital. Kim began by sharing reflections of Ruth, the “Godmother of Oncology Nursing,” who recognized the importance and contributions of APPs and stressed the delivery of exceptional, compassionate care. Ruth



[Read More](#)

Researchers Advance a Novel Screening Test for Early-Stage Ovarian and Endometrial Cancer



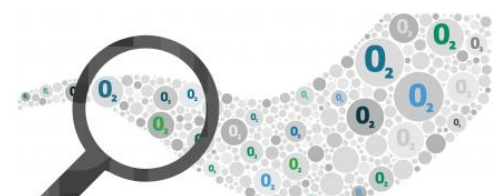
[Read More](#)

Five Questions With: Dr. Joseph Renzulli, Dr. Sanjay Aneja, and Dr. Matthew Austin



[Read More](#)

With Discovery, Oxygen's Role in Growth of Tumors Reconsidered



implemented the symptom distress tool and was a national leader in quality of life and palliative care research. Vanna continued by announcing this year's award winner, **Erin Medoff, APRN**. Erin has cared for patients at Yale for over 40 years, and for 29 years as a pioneer in Oncology APP practice at Yale Cancer Center/Smilow Cancer Hospital and the entire state of Connecticut. She is a true role model, patient focused, and the unsung hero of the hematology team! Not only is Erin a skilled practitioner, but she also unselfishly shares her expertise and mentors new nurses and trainees. Many in hematology affectionately refer to her as the "Queen of Procedures," reflecting her expert skills, calm demeanor, and attention to patient needs.



Barbara Burtness, MD, was awarded the **Yale Cancer Center Award for Leadership in Diversity, Equity, and Inclusion (DEI)** in honor of her leadership as Interim Associate Cancer Center Director for DEI over the last eighteen months. Dr. Burtness' efforts laid the foundation for a more inclusive, thoughtful community and her efforts to advocate for people traditionally in the margins made a difference for our entire Cancer Center. Presented by Tara Sanft, MD, Dr. Burtness was described as one who "uses wisdom, dedication, and humility to challenge the status quo thinking and make sure that everyone has a sense of belonging at Yale Cancer Center."



[Read More](#)

Follow us!



Join Dr. Elizabeth Prsic, medical oncologist and Director of Adult Inpatient Palliative Care at Smilow Cancer Hospital, on Yale Cancer Answers as she discusses the benefits of palliative care for both patients and caregivers, and provides an overview of services that are offered. Listen on Connecticut Public Radio or download our podcast from iTunes.





The **Yale Cancer Center Award for Mentorship Excellence** was presented to **Xiaomei Ma, PhD**, Professor of Epidemiology (Chronic Diseases) and Co-Leader of the Cancer Prevention and Control Research Program, by Nicole Deziel, PhD, MHS. Dr. Ma received a record 13 nominations in recognition of her generosity, support, individualized attention, and humanity.



The **Yale Cancer Center Award for Teaching Excellence** was presented to **Sarah Golberg, MD, MPH**, Associate Professor of Medicine (Medical Oncology) and Associate Director of the Medical Oncology-Hematology Fellowship Program, by Harriet Kluger, MD. Dr. Goldberg was noted for her terrific research and clinical skills and unique ability to tie everything together in her teaching, which some faculty refer to as “The Goldberg Model.”

The **Class of 1961 Cancer Research Awards** were presented to **Nikhil Joshi, PhD**, Associate Professor of Immunobiology, and **Kurt Schalper, MD, PhD**, Associate Professor of Pathology and Medicine (Medical Oncology) and Director of the Translational Immuno-Oncology Lab. They were honored for their significant accomplishments in cancer research as young members of the faculty, coupled with the expectation for future outstanding contributions to the causes of cancer and the development of novel cancer treatments.

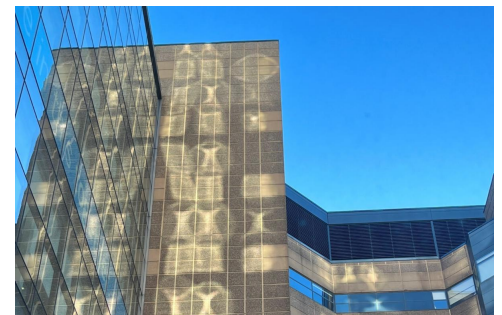
The **Yale Cancer Center Population Science Research Prizes** were presented to **Michael S. Leapman, MD, MHS**, Associate Professor of Urology and Clinical Program Leader, Prostate & Urologic Cancers Program and **Sajid Khan, MD, FACS, FSSO**, Associate Professor of Surgery



[Read More](#)

Photo and description shared by Senior Pharmacy Specialist, Thomas Ferencz, RPh, BCOP:

“I was in the Smilow staircase walking down from NP8 to ground level and I noticed the cool reflections of the sunshine off Smilow, back onto the side of the West Pavilion! The photo reminds me of: Genetic material, especially at the bottom of the reflection; the 2 “XX” in unique/slightly overlapping circles, reminds of the “cell cycle”- as cellular material progresses into telophase... The other reflections could almost be seen as binding sites of monoclonal antibodies to their targets... Lastly, one could even think the X’s and O’s represent the exceptional care, love, and compassion provided by staff at Smilow Cancer Hospital!”



(Surgical Oncology) and Section Chief, Hepato-Pancreato-Biliary (HPB) and Mixed Tumors. Dr. Leapman was given his award for his work on the study “Mediators of Racial Disparity in the Use of Prostate Magnetic Resonance Imaging Among Patients With Prostate Cancer,” and Dr. Khan for “Evaluation of Racial Disparities in Quality of Care for Patients With Gastrointestinal Tract Cancer Treated With Surgery,” both published in *JAMA Open Network*.

The **Yale Cancer Center Translational Science Research Prize** was presented to **Rachel Perry, PhD**, Assistant Professor of Cellular & Molecular Physiology and of Medicine (Endocrinology), for her papers in *Precision Oncology*, “Multimodal analysis suggests differential immuno-metabolic crosstalk in lung squamous cell carcinoma and adenocarcinoma,” and *Communications Biology*, “A precision medicine approach to metabolic therapy for breast cancer in mice.”

The **Yale Cancer Center Clinical Science Research Prize** was awarded to **Joseph Kim, MD**, Associate Professor of Medicine (Medical Oncology) and Director of Prostate Cancer Research, for his publication in *The Journal of Clinical Oncology* “Randomized Trial of Olaparib With or Without Cediranib for Metastatic Castration-Resistant Prostate Cancer: The Results From National Cancer Institute 9984.”

The **Yale Cancer Center Basic Science Research Prizes** were presented to **Joseph Craft, MD**, Paul B. Beeson Professor of Medicine (Rheumatology) and Professor of Immunobiology, and **Nikhil Joshi, PhD**, Associate Professor of Immunobiology, for their publication in *Cell*, “Neoantigen-driven B cell and CD4 T follicular helper cell collaboration promotes anti-tumor CD8 T cell responses.”

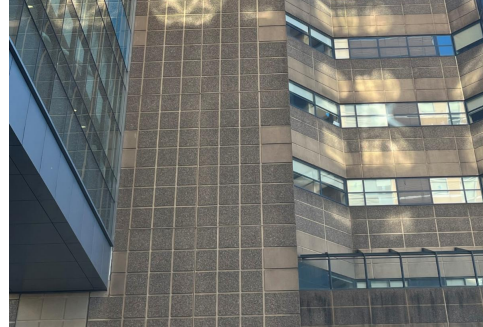
Announcements

Faye Rogers, PhD, Appointed Associate Director for DEI

Please welcome Faye Rogers, PhD, Associate Professor of Therapeutic Radiology, as Associate Cancer Center Director for Diversity, Equity, and Inclusion (DEI) at Yale Cancer Center. Dr. Rogers’ commitment to DEI and significant experience and achievements in DEI matters make her an ideal choice to lead our program for Yale Cancer Center. As Associate Cancer Center Director for

DEI, Dr. Rogers will help to ensure Yale Cancer Center is a welcoming environment and will work to develop new programs and practices that effectively increase the diversity of our faculty and staff.

Dr. Rogers will lead Yale Cancer Center’s efforts to enhance our culture of belonging, including programs and



[Read More](#)

Carla and Landon Presz from Lindsay’s Legacy Foundation dropped off a generous load of arts and crafts items for patients on NP11 just before the holidays. This is the second year the family has made a donation; the Presz family wants our patients, especially those staying for greater lengths of time, to enjoy a distraction from their challenges.

We are so grateful to Lindsay’s Legacy Foundation for their continued support of hematology research and for these unique, joyful, and most welcomed craft donations for our patients. Lindsay’s Legacy Foundation was established to honor the life of Lindsay Presz Barrett after her death due to Acute Myeloid Leukemia. The organization was formed by Lindsay’s family to remember Lindsay, her journey, and her profound message of hope.

Pictured: Landon Presz, along with Jill Williams and Tanaz Mistry from NP11.



training in cultural and structural humility, counteracting stigma and stereotypes, and gender discrimination. In addition, she will lead the Yale Cancer Center Council for Diversity, Equity, and Inclusion. In 2022, she was awarded the Yale Cancer Center Leadership in Diversity, Equity, and Inclusion Award.

She is strongly committed to career development, mentorship, and opportunities to diversify the scientific workforce.

[Read More](#)



Patrick Kenney, MD, Appointed Oncology Service Line Medical Director for Greenwich

We are pleased to announce the appointment of Patrick A. Kenney, MD, as the Service Line Medical Director for Greenwich Hospital and Regional Physician Leader for Oncology Growth. Dr. Kenney's clinical leadership at the Yale New Haven Health System and dedication on behalf of our physicians, nurses, caregivers, and our patients has led to streamlined patient care and innovations in healthcare delivery. In his new role as medical director, Dr. Kenney will continue to build multidisciplinary cancer care and further develop integrated clinical programs at the Smilow Cancer Hospital Care Center in Greenwich. In addition, he will serve as the primary ambassador for our Center in Greenwich, representing Greenwich Hospital, Yale Cancer Center, and Smilow Cancer Hospital in the region, ultimately growing our practice.



An Associate Professor of Urology at Yale School of Medicine, Dr. Kenney specializes in treating genitourinary cancers, with a particular focus on kidney cancers. He performs robotic, laparoscopic, and open surgery for kidney cancer, with an emphasis on organ and function preservation and minimally invasive surgery whenever feasible. Dr. Kenney's research interests are in the integration of surgery and systemic therapy for locally advanced, metastatic, and treatment-resistant kidney cancer. Dr. Kenney's administrative leadership roles have included serving as Interim Chair of the Department of Urology, Clinical Leader for Genitourinary Oncology at Smilow Cancer Hospital, Clinical Vice Chair of Yale Medicine Urology, Vice Chair of Quality and Safety of Yale Medicine Urology, and Medical Director of Corporate Supply Chain for Yale New Haven Health System.

[Read More](#)

Notables

Aarti Bhatia, MD, MPH, Associate Professor of Medicine (Medical

[Read More](#)

Recently on Yale Cancer Answers, medical oncologist Dr. Jacquelyne Gaddy, discussed research and insight into racial and ethnic disparities and improving health outcomes for patients with cancer as part of the Center for Gastrointestinal Cancers at Smilow Cancer Hospital and Yale Cancer Center. Listen on Connecticut Public Radio or download our podcast from iTunes.



[Read More](#)

After a recurrence of metastatic breast cancer in 2015, Sandy Cassanelli began to look for a charitable fund where she could channel her energy and emotion—and support. While researching online, she discovered the surprising statistics of how charities use their donations, and how so few dedicate 100% of their donations to their cause. According to CharityWatch.org, “The most highly efficient charities are able to spend 75% or more on programs,” leaving on average 25% of donations spent on general administration and expenses. Not one to sit on her hands, this disappointment quickly turned into inspiration, and Sandy launched her own fund that would directly support her oncologist and his breast cancer research, the Breast Friends Fund.

Learn more about Sandy Cassanelli and the Breast Friends Fund in the Fall/Winter issue of Centerpoint



A Labor of Love

YaleNewHavenHealth

Yale

Oncology), has been named **Leader of the Head & Neck Disease-Aligned Research Team (DART)** for Yale Cancer Center and Smilow Cancer Hospital. Dr. Bhatia has extensive leadership and experience in clinical trial execution and will help to ensure access to innovative trials for our patients with head and neck cancers. Dr. Bhatia will oversee the research operations of the head & neck team, including the clinical trial portfolio and accruals for the team. In her new role, Dr. Bhatia will work closely with Dr. Barbara Burtness, Leader of the Head & Neck Cancer Program for Smilow Cancer Hospital and Dr. Ian Krop and Alyssa Gateman in the Yale Cancer Center Clinical Trials Office.

Melissa Young, MD, PhD, Associate Clinical Professor of Therapeutic Radiology, has been appointed **Medical Director of the Smilow Cancer Hospital Radiation Oncology Program in New Haven**. Dr. Young has provided exemplary leadership to the Trumbull program for the past five years, and we are delighted that she has agreed to take on this new role in New Haven.

Yale Cancer Center recently appointed **Christine Holmberg, MA**, as **Assistant Cancer Center Director, Research Affairs**. Christine joins YCC from the YSM Integrated Business Operations of Anesthesiology, Emergency Medicine, Ophthalmology and Surgery, where she served as Associate Director for Research Administration. Prior to the IBO, Christine spent over 10 years with Yale Cancer Center as a Program Manager where she participated in the 2013 and 2018 CCSG renewals. In her new leadership role as Assistant Cancer Center Director, Christine will serve as a strategic leader and CCSG advisor. Her extensive research administration background as well as leadership experience with Yale School of Medicine will be a great addition to the team.

Kristina Capretti, MSN, RN, ANP-BC, OCN, has been promoted to **Patient Services Director, Smilow Bridgeport and Greenwich** effective January 17, 2023. Kristina began her career at Greenwich Hospital in 2007 as a Nurse Clinician on the inpatient oncology unit. She then worked for several years at NYU Langone Medical Center Perlmutter Cancer Center as an Oncology Nurse and Oncology Nurse Practitioner before returning to Greenwich Hospital. Since 2014, she has held numerous leadership positions in oncology including Quality and Safety Manager, Oncology Nurse Manager, and her current position as Clinical Program Director for both the inpatient and outpatient oncology units at Greenwich and Stamford.

Laura Baum, MD, MPH, Assistant Professor of Medicine (Medical

Oncology), has published a book chapter titled "Pain and Palliative Care" in **Holland-Frei Cancer Medicine**, along with Cardinale Smith, MD, PhD.

The **Cancer Immunology Research Program** welcomes **Alexa Siddon, MD**, Associate Professor of Laboratory Medicine and Pathology. Dr. Siddon is a hematopathologist, diagnosing numerous malignant hematolymphoid neoplasms each time she is on service. Dr. Siddon has several diverse research



[Read More](#)

Congratulations to Ranjit Bindra, MD, PhD, Harvey and Kate Cushing Professor of Therapeutic Radiology and Professor of Pathology, Vice Chair for Translational Research, Therapeutic Radiology, and Scientific Director, Chênevert Family Brain Tumor Center at Smilow Cancer Hospital and Yale Cancer Center, on his recognition as the 2022 BioCT Entrepreneur of the Year! The Entrepreneur of the Year award was established by BioCT to acknowledge the importance of showcasing unique accomplishments of entrepreneurs in the Connecticut community whose accomplishments are also having impact beyond the borders of the state.



[Read More](#)

Our amazing team at the Smilow Cancer Hospital Care Center in North Haven challenged each other with an ornament decorating contest this holiday season. The team had such fun creating ornaments and decorating the tree in the care center waiting room and our patients and families have loved the addition! Thank you for your generous spirit!



interests within the field of hematopathology. Her overall focus is on malignant hematopathology, as well as immunohematology and coagulation. Further, she is interested in the overlap between hematology and transfusion support for patients.



[Read More](#)

Employee Profile: Judy Plotkin & Michele Messina

After dedicated careers, Senior Administrative Assistants, Judy Plotkin and Michele Messina, both retired from Yale Cancer Center this week. Throughout their careers, Judy and Michele have served as pillars of Yale Cancer Center and the administrative team sharing support, dedication, and humor.

Judy Plotkin began her tenure at Yale in the Department of Immunobiology working on various grant applications, and after four years took the opportunity to start with Yale Cancer Center. She most recently supported Drs. Barbara Burtness, Kurt Schalper, Aarti Bhatia, and Michael Cecchini, in addition to five doctors at the West Haven VA Medical Center.





Christine Merenda, Administrative Supervisor for the Section of Medical Oncology, commented, "Yale Cancer Center has been lucky to have Judy's support for the last 16 years. She is kind, dedicated, and is always willing to help her team. Judy is such an amazing person who is there to listen, always has a smile, and a witty comment that is often needed!"


Richard Carr, Administrative Supervisor for the Section of Hematology, said, "I have had the distinct pleasure of working with Judy at two different institutions and knowing her for over 20 years. She has been a constant presence I have been so fortunate to have and a true friend. I am so happy for her as she enters this next chapter of her life, and I look forward to our continued friendship in the years to come."


Michele Messina has spent all 14 ½ years at Yale Cancer Center and most recently provided support to Drs. Jill Lacy, Joseph Kim, Sarah Goldberg, Scott Gettinger, and Hari Deshpande.


Christine Merenda said of working with Michele, "From my first encounter, I knew Michele was a force of nature. She is never afraid to say how she feels, always has a smile, and her enthusiasm is just amazing."

 Congratulations to Dr. Faye Rogers @RogersLabYale on her appointment to Associate Cancer Center Director for Diversity, Equity, and Inclusion (DEI)!


 Radon is the second leading cause of #lungcancer. The CT Dept. of Public Health @CTDPH is working with 42 communities around the state to provide free #radon air test kits.


 "Screenings—#papsmeears and #HPV testing, has led to a decrease in #cervicalcancer mortality, and has improved early and asymptomatic detection," said Dr. Shari Damast, Professor of Therapeutic Radiology.

 "The lack of #diversity in #clinicalresearch is a social justice and a public health problem," co-author Jennifer Miller, founder of Bioethics International and an associate professor at Yale School of Medicine.

 Join us online or in-person today at 12pm for #GrandRounds featuring Jeremy Warner, MD, MS, @BrownUCancer

presenting "Using and Improving the Real-World Data Ecosystem in #Cancer."

 The latest @NCCN Ovarian Cancer Guidelines adds a Cat 2B recommended regimen for treatment of #ovariancancer based on Phase II trial results from @YaleCancer @SmilowCancer.

 Tonight at 7:30pm on Yale Cancer Answers, join @ElizabethPrsic as she discusses the benefits of #palliativecare for both patients and caregivers, and provides an overview of services offered @SmilowCancer. Listen live on @wppr

Anna Raso, Chief of Staff for Yale Cancer Center, commented, "Michele has brought a bright energy and enthusiasm to our team during her years at Yale Cancer Center. I feel so grateful to have had the privilege of working alongside a person who infuses warmth and humor in everything she does."

We wish Judy and Michele both a happy retirement and thank them for their support!

Recent Publications

Witmer, H. D. D., Dhiman, A., & Turaga, K. K.

Cytoreductive surgery and hyperthermic intraperitoneal chemotherapy for colorectal peritoneal metastases: Where do we stand?

Cancer, 10.1002/cncr.34567.

[Read More](#)

Huffman, B. M., Basu Mallick, A., Horick, N. K., Wang-Gillam, A., Hosein, P. J., Morse, M. A., Beg, M. S., Murphy, J. E., Mavroukakis, S., Zaki, A., Schlechter, B. L., Sanoff, H., Manz, C., Wolpin, B. M., Arlen, P., Lacy, J., & Cleary, J. M.

Effect of a MUC5AC Antibody (NPC-1C) Administered With Second-Line Gemcitabine and Nab-Paclitaxel on the Survival of Patients With Advanced Pancreatic Ductal Adenocarcinoma: A Randomized Clinical Trial.

JAMA network open, 6(1), e2249720.

[Read More](#)

Knobf, M. T., Hwang, Y., Sumpio, C., Barbarotta, L., & Slusser, K.

Struggling, Adapting, and Holding Each Other Up: A Qualitative Study of Oncology Nurses During the First Year of the COVID-19 Pandemic.

Oncology nursing forum, 49(6), 491–499.

[Read More](#)

Slusser, K., Knobf, M. T., Linsky, S., Kaisen, A., Parkosewich, J., Sterne, P., Johnson, C., Carley, J., & Beckman, B.

A Focus Group Study of Retirement-Age Nurses: Balancing Tension and a Love of Nursing in a Changing Healthcare Environment.

The Journal of nursing administration, 52(12), 646–652.

[Read More](#)

Adua, S. J., Arnal-Estapé, A., Zhao, M., Qi, B., Liu, Z. Z., Kravitz, C., Hulme, H., Strittmatter, N., López-Giráldez, F., Chande, S., Albert, A. E., Melnick, M. A., Hu, B., Politi, K., Chiang, V., Colclough, N., Goodwin, R. J. A., Cross, D., Smith, P., & Nguyen, D. X.

Brain metastatic outgrowth and osimertinib resistance are potentiated by RhoA in EGFR-mutant lung cancer.

Nature communications, 13(1), 7690.

[Read More](#)

Hong, C. S., & Omay, S. B.

Pituitary Apoplexy.

The New England Journal of Medicine, 387(25), 2366.

[Read More](#)

@ShimlowCancer. Listen live on @whpr or download our podcast from [@iTunes](#).



Patients with #colorectal cancer that has spread to the abdominal lining would benefit from cytoreductive surgery according to a recent study published in @JournalCancer from Dr. Kiran Turaga @kturaga.



Dr. Preston Sprenkle @dr_sprenkle discusses how #ablation is a new category of treatments that can treat #prostatecancer.



Join us for OncLive State of the Science Summit @OncLiveSOSS on #LungCancer featuring DrRoyHerbstYale and Sarah Goldberg. Thursday, January 12, 6-9pm Trumbull Marriott Shelton, Trumbull, CT



Congratulations to Rong Fan, PhD, @RongFan8 a member of our Cancer Signaling Networks Research Programs, has been appointed the Harold D. Hodgkinson Professor of Biomedical Engineering at Yale University



Worldwide there are >600,000 new cases of #cervicalcancer per year and >340,000 deaths were reported in 2020. Dr. Shari Damast @YaleRadOnc discusses advances in treatment and the use of #brachytherapy.



Join us in person or via Zoom today at 12pm as Dr. Shari Damast presents #GrandRounds, hosted by the

Radiobiology and Genome Integrity Research Program.



Congratulations to Dr. Steven H. Kleinstein, @skleinstein, a member of our Cancer Immunology Research Program, on his appointment as the Anthony N. Brady Professor of Pathology.

Calendar

Endocrinology Clinical Dilemma

January 13; 12:00 PM

BMM 206/208

Chalapathi Srinivasa Dushvant Mulkamala

Shabbir, A., Kojadinovic, A., Shafiq, T., & Mundi, P. S.

Targeting RET Alterations In Cancer: Recent Progress And Future Directions.

Critical Reviews in Oncology/Hematology, 181, 103882.

[Read More](#)

Taddei, T. H., & Jou, J. H.

"When To Stop Screening - Liver Cancer".

The American Journal of Gastroenterology,

10.14309/Ajg.0000000000002120.

[Read More](#)

Moran, M. S., & Ho, A. Y.

Radiation Therapy For Low-Risk Breast Cancer: Whole, Partial, Or None?.

Journal of Clinical Oncology: Official Journal of The American Society Of Clinical Oncology, 40(36), 4166–4172.

[Read More](#)

Giri, V. N., Oliver, T. K., Rumble, R. B., Friedberg, J. W., Miller, K. D., & Geisel, R. L.

ASCO Living Guidelines: The Next Frontier.

Journal of Clinical Oncology: Official Journal of The American Society Of Clinical Oncology, JCO2202344.

[Read More](#)

Oh, S. J., & Butler, P. D.

Ensuring Both Accessibility And Usability Of Breast Cancer Care.

Annals of Surgical Oncology, 30(1), 8–9.

[Read More](#)

Dinan, M. A., Pitafi, S., Greenup, R. A., Long, J. B., & Gross, C. P.

Genetic Testing In Privately Insured Women With Surgically Treated Breast Cancer.

Breast Cancer Research and Treatment, 10.1007/S10549-022-06829-4.

[Read More](#)

Ito, S., & Goshua, G.

Apixaban At Apex? Aligning Drug Pricing With Value In Cancer-Associated Thrombosis.

Annals of Internal Medicine, 10.7326/M22-3404.

[Read More](#)

Chin, C., & Damast, S.

Brachytherapy Impacts On Sexual Function: An Integrative Review Of The Literature Focusing On Cervical Cancer.

Brachytherapy, S1538-4721(22)00373-7.

[Read More](#)

Gurnari, C., Xie, Z., & Zeidan, A. M.

How I Manage Transplant Ineligible Patients With Myelodysplastic Neoplasms.

Clinical Hematology International, 10.1007/S44228-022-00024-4.

[Read More](#)

Venkata

[Learn More](#)

Yale Cancer Answers

January 15; 7:30 PM

Diagnostic and Screening Tools for Gynecologic Cancers

Peter Dottino, MD, FACOG

[Learn More](#)

Yale Cancer Center Grand Rounds

January 17; 12:00 PM

55 Park Street; Auditorium

The Minor Spliceosome: Exploring Novel Cancer Vulnerabilities

Mark Rubin, MD

[Learn More](#)

Human and Translational Immunology

Seminar Series

January 17; 4:00 PM

BML 131

[Learn More](#)

Cancer Genetics and Prevention Program Seminar

January 19; 2:30 PM

Pancreatic Neuroendocrine Tumors: A Review of Hereditary Predispositions and Indications for Genetic Testing

Amy Killie, MS, CGC

[Learn More](#)

2023 Digestive Health Virtual CME Series

January 19; 5:00 PM

Third Thursdays Trust your Gut

Walter Longo, MD, MBA, FACS, FASCRS |

Ritche Manos Hao, MD, BS | Haddon Pantel, MD | Bauer Sumpio, MD, PhD, FACS | Xavier Llor, MD, PhD | Nitu Kashyap, MD, FAMIA | Myron Brand, MD | Darrick K. Li, MD, PhD | Kevin Schuster, MD, MPH, FACS, FCCM, BS | Melanie Sion | Scott Roberts, MD | Jill Banatoski, MD | Loren Laine, MD | Anil Nagar, MD | Thiruvengadam Muniraj, MD, FRCP | Amit Khanna, MD | Ira Leeds, MD, MBA, ScM, AB | Joseph Lim, MD | Maricar Malinis, MD, FACP, FIDSA, FAST | Catele Antunes, MD | Katherine M. Reeve, MD | Andrew Duffy, MD, FACS, FASMBS | Andrew Kenler, MD | Guadalupe Garcia-Tsao, MD, FRCP

[Learn More](#)

Endocrinology Clinical Dilemma

Cao, A., Cartmel, B., Li, F. Y., Gottlieb, L. T., Harrigan, M., Ligibel, J. A., Gogoi, R., Schwartz, P. E., Irwin, M. L., & Ferrucci, L. M.

Exercise Adherence In A Randomized Controlled Trial Of Exercise On Quality Of Life In Ovarian Cancer Survivors.

Journal of Cancer Survivorship: Research and Practice, 10.1007/S11764-022-01325-6.

[Read More](#)

Zheng, H., Wu, L., Xiao, Q., Meng, X., Hafiz, A., Yan, Q., Lu, R., & Cao, J.

Epigenetically Suppressed Tumor Cell Intrinsic STING Promotes Tumor Immune Escape.

Biomedicine & Pharmacotherapy = Biomedecine & Pharmacotherapie, 157, 114033.

[Read More](#)

Mittendorf, E. A., Kantor, O., Weiss, A., Richardson, E., Garrido-Castro, A., Portnow, L. H., Krop, I. E., Lin, N. U., Winer, E. P., Tolaney, S. M., & King, T. A.

Nodal Positivity In Early-Stage Triple-Negative Breast Cancer: Implications For Preoperative Immunotherapy.

Annals of Surgical Oncology, 30(1), 100–106.

[Read More](#)

Lerner, B. A., Xicola, R. M., Rodriguez, N. J., Karam, R., & Llor, X.

Simplified And More Sensitive Criteria For Identifying Individuals With Pathogenic CDH1 Variants.

Journal of Medical Genetics, 60(1), 36–40.

[Read More](#)

Huang, G. S., Tymon-Rosario, J., & Santin, A. D.

What Role Does Adjuvant Therapy Play In The Management Of Endometrial Cancer?.

Expert Opinion on Pharmacotherapy, 1–4.

[Read More](#)

Xu, X., Chan, A. K. N., Li, M., Liu, Q., Mattson, N., Pangen Pokharel, S.,

Chang, W. H., Yuan, Y. C., Wang, J., Moore, R. E., Pirrotte, P., Wu, J., Su, R., Müschen, M., Rosen, S. T., Chen, J., Yang, L., & Chen, C. W.

ACTR5 Controls CDKN2A And Tumor Progression In An INO80-Independent Manner.

Science Advances, 8(51), Eadc8911.

[Read More](#)

Santin, A. D., Vergote, I., González-Martín, A., Moore, K., Oaknin, A., Romero, I., Diab, S., Copeland, L. J., Monk, B. J., Coleman, R. L., Herzog, T. J., Siegel, J., Kasten, L., Schlicker, A., Schulz, A., Köchert, K., Walter, A. O., Childs, B. H., Elbi, C., & Bulat, I.

Safety And Activity Of Anti-Mesothelin Antibody-Drug Conjugate Anetumab Ravtansine In Combination With Pegylated-Liposomal Doxorubicin In Platinum-Resistant Ovarian Cancer: Multicenter, Phase Ib Dose Escalation And Expansion Study.

International Journal of Gynecological Cancer: Official Journal of the International Gynecological Cancer Society, Ijgc-2022-003927.

[Read More](#)

Tyagi, T., Jain, K., Yarovinsky, T. O., Chiorazzi, M., Du, J., Castro, C., Griffin

January 20; 12:00 PM

BMM 206/ 208

Carolina Gonzalez-Lopez

[Learn More](#)

Digestive Diseases Pathophysiology

Seminar

January 20; 1:00 PM

IBD: Surgical Management

Ira Leeds, MD, MBA, ScM, AB

[Learn More](#)

Yale Cancer Answers

January 22; 7:30 PM

Pain and Symptom Management for Cancer Patients

Andrew Putnam, MD

[Learn More](#)

Yale Cancer Center MB&B Seminar

January 23; 4:00 PM

Hope Memorial Building; 110

RNA Enzymology in Translation Regulation

Kathy Liu

[Learn More](#)

Yale Cancer Center Grand Rounds

January 24; 12:00 PM

55 Park Street; Auditorium

Oncologic Anthropology: African Ancestry and TNBC

Lisa Newman, MD, MPH, FACS, FASCO

[Learn More](#)

YSPH/Chronic Disease Epidemiology

Seminar 525b

January 24; 12:00 PM

47 College Street; 106B

Genetic Testing for Prostate Cancer:

Considerations In Practice

Veda Giri, MD

[Learn More](#)

Schwartz Center Rounds 2022-2023

January 25; 12:00 PM

Speaker TBA

[Learn More](#)

HIV-Associated Lung Cancer

January 25; 12:00 PM

Hope Memorial Building; 110

Multidisciplinary Discussion: Infectious

Diseases, Medical Oncology

Brinda Emu, MD | Sarah Goldberg, MD, MPH

[Learn More](#)

Tyagi, P., Jain, R., Tarovinisky, T. C., Chiarazzi, M., Du, J., Castro, C., Grimm, J., Korde, A., Martin, K. A., Takyar, S. S., Flavell, R. A., Patel, A. A., & Hwa, J.

Platelet-Derived TLT-1 Promotes Tumor Progression By Suppressing CD8+ T Cells.

The Journal of Experimental Medicine, 220(1), E20212218.

[Read More](#)

Kim, S. Y., & Herbst, R. S.

Bfast But Be Smart: Btmb Remains An Exploratory Biomarker In Nsclc. Nature Reviews.

Clinical Oncology, 20(1), 3–4.

[Read More](#)

Jaffe, A., Taddei, T. H., Giannini, E. G., Ilagan-Ying, Y. C., Colombo, M., & Strazzabosco, M.

Alternative HCC Prognostic Biomarkers And Use Of Artificial Intelligence In The Management Of HCC.

Liver International: Official Journal of The International Association for the Study Of The Liver, 43(1), 258–259.

[Read More](#)

Stendahl, K., Gilani, S. M., Basturk, O., Hui, P., Sigel, C., & Cai, G.

Intraductal Papillary Neoplasm of The Bile Duct: Cytomorphologic And Molecular Features.

Cancer Cytopathology, 131(1), 37–49.

[Read More](#)

Bernstein, S. L., Dziura, J., Weiss, J., Brooks, A. H., Miller, T., Vickerman, K. A., Grau, L. E., Pantaloni, M. V., Abroms, L., Collins, L. M., & Toll, B.

Successful Optimization of Tobacco Dependence Treatment In The Emergency Department: A Randomized Controlled Trial Using The Multiphase Optimization Strategy.

Annals of Emergency Medicine, S0196-0644(22)00591-1.

[Read More](#)

Choi, A., Bui T., Pan E., Ozcan M.

Is Central Anticholinergic Syndrome Linked To Opioid Use For Cervical Cancer Pain?

Anaesthesia, Pain & Intensive Care, Vol 26(6); December 2022

[Read More](#)

Taddei, T. H., & Jou, J. H.

When To Stop Screening-Liver Cancer.

The American Journal of Gastroenterology, 10.14309.

[Read More](#)

Rodler E, Sharma P, Barlow WE, Galow JR, Puhalla SL, Anders CK, Goldstein L, Tripathy D, Brown-Glaberman UA, Huynh TT, Szyarto CS, Godwin AK, Pathak HB, Swisher EM, Radke MR, Timms KM, Lew DL, Miao J, Puztai L, Hayes DF, Hortobagyi GN.

Cisplatin With Veliparib Or Placebo In Metastatic Triple-Negative Breast Cancer And BRCA Mutation-Associated Breast Cancer (S1416): A Randomised, Double-Blind, Placebo-Controlled, Phase 2 Trial

The Lancet, S1470-2045(22)00739-2

[Read More](#)

Cancer Genetics and Prevention Program Seminar

January 26; 2:30 PM

[Learn More](#)

Center for GI Cancers Seminar

January 26; 4:15 PM

Resistance is futile: Overcoming Resistance to Molecularly Targeted Therapies in Patients with Metastatic Colorectal Cancer

John H. Strickler, MD

[Learn More](#)

Smilow Cancer Hospital Town Hall

January 26; 5:30 PM

[Learn More](#)

Yale Cancer Center Thoracic Seminar Series

January 27; 12:00 PM

Lung Cancer Screening: Where are we and what will the future bring?

Lecia Sequist, MD, MPH

[Learn More](#)

Endocrinology Clinical Dilemma

January 27; 12:00 PM

BMM 206/208

Mary Windham, MD, PhD

[Learn More](#)



Share your news!

Please submit your recent publications, awards, and grant announcements to:

Renee Gaudette

Director, Public Affairs and Communications

Madanat, Y. F., Xie, Z., & Zeidan, A. M.

Advances In Myelodysplastic Syndromes: Promising Novel Agents and Combination Strategies.

Expert Review of Hematology, 10.1080/17474086.2023.2166923.

Read More

Funding and Award Opportunities

YCC Cancer Disparities Research Awards

Open to investigators who are Yale Cancer Center members.

Multidisciplinary teams (all members of the team do not have to be a YCC member), either already established or formed in response to this opportunity, are encouraged. Relevance of proposed research to our catchment area priorities is also an important consideration. High priority catchment area cancers include breast, hepatocellular, lung, and prostate. The following cross-cutting themes have also been identified as priorities: brain metastases, early age of onset cancers, obesity/energy-balance, and tobacco use.

Letter of Intent Due: January 20, 2023

Read More

L'Oreal: L'Oréal USA For Women in Science Fellowship 2023

The L'Oréal USA For Women in Science (FWIS) fellowship program honors female scientists at a critical stage in their careers. The FWIS program is seeking five exceptional female scientists looking to advance their research and serve as role models for the next generation of girls in STEM.

Application Deadline: January 27, 2023

Read More

Measures and Methods to Advance Research on Minority Health and

Health Disparities-Related Constructs (R01)

The purpose of this FOA is to support research that will advance the measurement and methodology of complex constructs relevant to minority health and health disparities.

Application Deadline: February 5, 2023

Read More

NCI Cancer Moonshot Scholars Diversity Program (CMSDP) (R01)

This Funding Opportunity Announcement (FOA) supports the Cancer Moonshot Scholars Diversity Program (CMSDP) and solicits R01 grant applications that propose independent research projects within the scientific mission of the National Cancer Institute (NCI). The overarching goal of the CMSDP is to increase the number of R01 Early Stage Investigators (ESIs) and enhance the diversity of the cancer research workforce, while promoting scientific advancements in cancer. Investigators from diverse backgrounds, including those from underrepresented groups are encouraged to work with their institutions to apply.

Application Deadline: February 6, 2024

Read More

Transformative Educational Advancement and Mentoring Network (TEAM) (R25)

The NIH Research Education Program (R25) supports research education

activities in the mission areas of the NIH. The overarching goal of this R25 program is to support educational activities that complement and/or enhance the training of a workforce to meet the nation's biomedical, behavioral and clinical research needs.

Application Deadline: February 10, 2023

Read More

2023 K12 Immuno-Oncology Training Program (IOTP) Scholar Award

YCC-IOTP Scholar Award is an award for junior faculty to enhance research skills beyond the training provided during graduate and postgraduate training. Successful applicants are required to demonstrate a strong commitment to a career in cancer immunology. The two-year IOTP curriculum includes didactic and practical training in basic, translational and clinical aspects of cancer immunology research. The program also includes a required research component (either clinical or bench research, or a combination thereof). Applicants are required to identify a mentor and provide a research and mentorship proposal.

Full Application Due: February 15, 2023

Read More

Gabrielle's Angel Foundation – Mark Foundation Collaborative Grant Award

Gabrielle's Angel Foundation and The Mark Foundation for Cancer Research announce the development of a collaborative research program involving investigators currently or previously funded by Gabrielle's Angel Foundation. This award presents those proven and accomplished researchers with the opportunity to explore new ideas together in a collaborative setting.

Letters of Intent Due: February 17, 2023

Read More

Mentored Research Scientist Career Development Award in Tobacco Regulatory Research (K01)

The purpose of this FOA is to provide support and protected time (three, four, or five years) for an intensive, supervised career development experience in biomedical, behavioral, and social science research that will inform the development and evaluation of regulations on tobacco product manufacturing, distribution, and marketing and that will lead to research independence.

Application Deadline: February 21, 2023

Read More

ALSF 2023 POST (Pediatric Oncology Student Training) Program

The POST Program provides an opportunity for students to train with a mentor who is conducting research in the field of pediatric oncology. The POST Program is designed for undergraduate, graduate and medical students interested in pursuing a career in pediatric oncology research. PhD students are not eligible to apply.

Application Deadline: February 21, 2023

Read More

Pathway to Independence Award in Tobacco Regulatory Research (K99/R00)

The purpose of this FOA is to increase and maintain a strong cohort of new and talented independent investigators conducting research that will inform the development and evaluation of regulations on tobacco product manufacturing, distribution, and marketing.

manufacturing, distribution, and marketing.

Application Deadline: February 21, 2023

Read More

NCI Small Grants Program for Cancer Research for Years 2023, 2024, and 2025

This FOA supports small research projects on cancer that can be carried out in a short period of time with limited resources. The R03 grant mechanism supports different types of projects including pilot and feasibility studies; secondary analysis of existing data; small, self-contained research projects; development of research methodology; and development of new research technology.

Application Deadline: February 22, 2023

Read More

NCI Cancer Screening Research Network Funding Opportunities

The CSRN conducts rigorous, multi-center cancer screening trials and studies with large and diverse populations in a variety of health care settings with the goal of reducing cancer incidence and cancer-related morbidity and mortality. Cancer screening provides a unique opportunity to diagnose cancers and pre-cancerous lesions before symptoms develop.

- **ACCruel, Enrollment, and Screening Sites (ACCESS) Hub (UG1)**

Read More

- **Statistics and Data Management Center (UG1)**

Read More

- **Coordinating and Communication Center (UG1)**

Read More

Application Deadlines: February 28, 2023

JH Milstone Fund Grant

JH Milstone Fund will award a grant in 2023 to support early-stage investigators and innovative research that improves understanding of bleeding, thrombosis or thrombolysis. The research can focus on the genetics, biochemistry or cell biology of coagulation or thrombolysis or on the causes, pathogenesis, diagnosis or treatment of bleeding and clotting disorders. In the absence of preliminary data, appropriate mentors and/or collaborators are important. For more information, please

contact Richard.Carr@yale.edu

Letter of Intent Due: March 1, 2023

Read More

CRI Immuno-Informatics Postdoctoral Fellowship

The CRI Immuno-Informatics Postdoctoral Fellowship Program aims to support qualified young scientists at academic research institutions around the world who wish to receive dual training in immunology and data science. The fellowships will support both computational biologists who seek to strengthen their knowledge of immunology and cancer immunologists who seek training in computational biology, data science, and/or genomics under the mentorship of world-renowned scientists in these disciplines.

Applications Deadline: March 1, 2023

Read More

NIH Enhancing the Use of the All of Us Research Programs Data (R21)

The *All of Us* Research Program within the Office of the Director (OD) encourages investigators to apply for grant awards that will advance research in high-priority mission areas of the Institutes, Centers, and Offices (ICOs)

through two companion FOAs (1) one to use standard methods and approaches to analyze currently available data within the *All of Us* Research Program's Researcher Workbench and (2) one to develop new methods, models, and tools and use them to analyze data in the Researcher Workbench. The new tools will be made broadly available to the scientific community.

Application Deadline: March 1, 2023

Read More

NIH Small Grants to Enhance the Use of the All of Us Research Programs Data (R03)

The *All of Us* Research Program within the Office of the Director (OD) encourages investigators to apply for grant awards that will advance research in high-priority mission areas of the Institutes, Centers, and Offices (ICOs) through two companion FOAs (1) one to use standard methods and approaches to analyze currently available data within the *All of Us* Research Program's Researcher Workbench and (2) one to develop new methods, models, and tools and use them to analyze data in the Researcher Workbench. The new tools will be made broadly available to the scientific community.

Applications Deadline: March 1, 2023

Read More

DeLuca Career Development Award

The purpose of this career development award is to provide early career clinical or laboratory-based investigators in Hematology, the opportunity to focus on research to advance patient care, therapies, and outcomes and with the goal to achieve independent support for their research from a national agency. For more information, please contact Richard.Carr@yale.edu

Letter of Intent Due: March 1, 2023

Read More

Innovative Molecular and Cellular Analysis Technologies for Basic and Clinical Cancer Research (R61)

This FOA solicits grant applications proposing exploratory research projects focused on the early-stage development of highly innovative technologies offering novel molecular or cellular analysis capabilities for basic, clinical, or epidemiological cancer research. The emphasis of this FOA is on supporting the development of novel capabilities involving a high degree of technical innovation for targeting, probing, or assessing molecular and cellular features of cancer biology.

Application Deadline: March 1, 2023

Read More

Advanced Development and Validation of Emerging Molecular and Cellular Analysis Technologies for Basic and Clinical Cancer Research (R33)

This FOA invites grant applications proposing exploratory research projects focused on further development and validation of emerging technologies offering novel capabilities for targeting, probing, or assessing molecular and cellular features of cancer biology for basic, clinical, or epidemiological cancer research. This FOA solicits R33 applications where major feasibility gaps for the technology or methodology have been overcome, as demonstrated with supportive preliminary data, but still requires further development and rigorous validation to encourage adoption by the research community.

Application Deadline: March 1, 2023

Application Deadline: March 1, 2023
[Read More](#)

Innovative Biospecimen Science Technologies for Basic and Clinical Cancer Research (R61)

This FOA solicits grant applications proposing exploratory research projects focused on the early-stage development of highly innovative technologies that improve the quality of the samples used for cancer research or clinical care. This includes new capabilities to address issues related to pre-analytical degradation of targeted analytes during the collection, processing, handling, and/or storage of cancer-relevant biospecimens. The overall goal is to support the development of highly innovative technologies capable of maximizing or otherwise interrogating the quality and utility of biological samples used for downstream analyses.

Application Deadline: March 1, 2023

[Read More](#)

Advanced Development and Validation of Emerging Biospecimen Science Technologies for Basic and Clinical Cancer Research (R33)

This FOA solicits grant applications proposing exploratory research projects focused on further development and validation of emerging technologies that improve the quality of the samples used for cancer research or clinical care. This includes new capabilities to address issues related to pre-analytical degradation of targeted analytes during the collection, processing, handling, and/or storage of cancer-relevant biospecimens.

Application Deadline: March 1, 2023

[Read More](#)

YCCI Educational Funding Support Opportunities

- **YCCI Multidisciplinary Post-Doctoral Training Program in Translational Research:** provide an opportunity for Yale post-doctoral trainees in the Schools of Medicine, Nursing, Public Health, Engineering and Applied Science or other appropriate Departments in the Graduate School to receive up to 2 years devoted to training across the full span of clinical and translational research focused on human health.

Application Deadline: March 10, 2023

[Read More](#)

- **YCCI Multidisciplinary Pre-Doctoral Training Program in Translational Research:** aims to identify and support a representative and diverse group of outstanding trainees who specifically want to pursue careers in clinical and translational research; to train them in the use of state-of-the-art research tools; to enhance their abilities to work collaboratively in complex multidisciplinary research teams; to provide outstanding mentoring (including concordant mentoring) by experienced and diverse faculty that support the trainee's long-term professional development.

Application Deadline: March 10, 2023

[Read More](#)

AHEAD (Advancing Head and Neck Cancer Early Detection Research) (U01)

The goal of this FOA is to accelerate translation of research to improve early detection of head and neck cancers (HNC). This initiative will encourage development, evaluation, and validation of biomarkers for risk assessment, detection, and molecular diagnosis and prognosis of early HNC.

Application Deadline: March 14, 2023

[Read More](#)

Diversity and Inclusion in Breast Cancer Research

The following research awards are designed with the primary goal of increasing diversity in the oncology workforce and breast cancer research. These awards are made possible through the support of the Breast Cancer Research Foundation (BCRF).

- **Career Development Award:** Full Application Due: March 13, 2023

[Read More](#)

- **Young Investigator Award:** Full Application Due: March 13, 2023

[Read More](#)

Small Research Grants for Analyses of Gabriella Miller Kids First Pediatric Research Data (R03)

The NIH Common Fund has established the Gabriella Miller Kids First Pediatric Research Program (Kids First) to develop a pediatric research data resource populated by genome sequence and phenotypic data that will be of high value for the communities of investigators who study the genetics of childhood cancers and/or structural birth defects.

Application Deadline: March 16, 2023

[Read More](#)

ACS Research Priority Area: Screening

Detecting cancer early saves lives. Unfortunately, the important benefits of cancer screening are not reaching enough people. The purpose of this RFA is to fund innovative research that will facilitate more widespread cancer screening and early detection culminating in reduced cancer mortality.

Internal Submission Deadline: April 3, 2023

[Read More](#)

Joint SPORE Developmental Research Program (DRP) Award – Cancer Disparities

The YCC Translational Research Office in collaboration with the Yale SPORE in Lung Cancer (YSILC) and the Yale Head and Neck SPORE (YHN-SPORE) have launched a new DRP award to provide support up to \$50,000 for a translational pilot project focused on **disparities-related cancer research** in the field of Head and Neck and/or Lung cancer. Studies with a strong translational or clinical component that have the potential to evolve into, or be incorporated into, a full SPORE project and projects with multi-disciplinary collaborations and/or community-based participatory research studies are encouraged.

We encourage to submit your letter of intent (LOI) to anna.arnal@yale.edu

There is no deadline to apply, LOIs will be reviewed and eligible applicants will be invited to submit a full application online

at: <https://yale.infoready4.com/>

[Read More](#)

Yale Cancer Center | 333 Cedar Street, New Haven, CT 06520

[Unsubscribe](#) renee.gaudette@yale.edu

[Update Profile](#) | [Constant Contact Data Notice](#)

Sent by renee.gaudette@yale.edu powered by





Try email marketing for free today!