

April 3, 2015

Announcements

Please Share Your Support

At last week's Smilow Cancer Hospital Town Hall, we discussed budget cuts and restrictive regulations Governor Malloy is proposing for the next year's state budget. I am requesting your active support in opposing these efforts by contacting your local state representatives.

Yale-New Haven Health System has developed a [website](#) to easily send your representatives an email expressing your support. The tool will route your note to the appropriate legislator based on your zip code. You can customize the email template, and I urge you to ask your friends and neighbors to use this tool to send their representatives an email as well.

Thank you in advance of your support.

NCCN Meeting

Smilow Cancer Hospital and Yale Cancer Center had a nice presence at the National Comprehensive Cancer Network Annual meeting last month. Our leadership is well represented on many of the committees, and I am pleased to announce that I was appointed to the Executive Committee during the meeting. This will continue to give Smilow and Yale Cancer Center a voice in their decision making process as NCCN develops guidelines for cancer care.

ACS & Smilow Annual Leadership Meeting

from the desk of

Thomas J. Lynch, Jr., MD

Director, Yale Cancer Center

Physician-in-Chief Smilow Cancer

Hospital at Yale-New Haven



SMILOW CANCER HOSPITAL
AT YALE-NEW HAVEN

Yale CANCER
CENTER
A Comprehensive Cancer Center Designated
by the National Cancer Institute

Recent News

Read recent articles featuring experts from Yale Cancer Center

[News Center >>](#)

LATEST ARTICLES:



Lung Cancer Pioneer Thomas Lynch Discusses the State of the Art

[Read More >>](#)



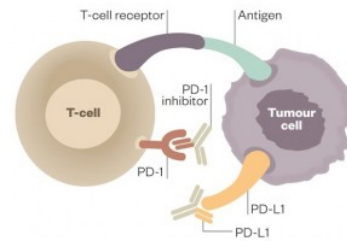
The leadership of Smilow Cancer Hospital was pleased to host our colleagues from the American Cancer Society for our annual leadership meeting to discuss our ongoing collaborations in patient care and research between the two organizations. The meeting provides a forum for us to discuss ways to better support our patients and families as well as the research agenda between our two organizations. Thank you to all those who attended and presented on behalf of Smilow and Yale Cancer Center.

Yale Medical Oncology Retreat



Yale Medical Oncology held a retreat on Friday, March 20 with the faculty members from our main campus at Smilow Cancer Hospital at Yale-New Haven and our 11 Care Centers to discuss patient care and research collaborations for the coming year.

Dr. Roy Herbst, Chief of Medical Oncology, welcomed his team to the two-day event and remarked, "I'm thrilled that we had the opportunity to come together, network, and discuss some of the challenges and successes we have all had. Together we can learn from one another and work together



Fighting Cancer from Within: The emerging immunotherapy paradigm of cancer treatment

[Read More >>](#)



Midlife Fitness Could Lower Cancer Risk in Men

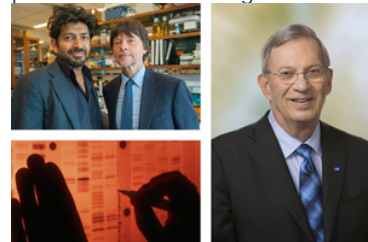
[Read More >>](#)

Join Yale Cancer Center on Facebook



LATEST POSTS:

The last episode of Ken Burns' "Cancer: The Emperor of All Maladies," featuring former Yale Cancer Center Director, Dr. Vincent DeVita, will air tonight at 9PM on CPTV/PBS. Supported locally by Smilow Cancer Hospital at Yale-New Haven, the documentary discusses both the history of cancer and our present understandings.



[Read More >>](#)

to continually strengthen Yale Medical Oncology's efforts to improve cancer care for our patients at Smilow and worldwide through our clinical trials program." Suggestions that came out of the retreat are already in development to improve care and communication between the main campus and Care Centers.

Notables

Congratulations to **Richard Lifton, MD, PhD**, who has been named Co-Chair of the **President's Precision Medicine Initiative** research network. Formed as a Working Group of the Advisory Committee to the NIH Director (ACD), the team of experts will deliver a preliminary report in September 2015 that will inform efforts to accelerate the understanding of individual differences that play a role in health, with the goal of informing better prevention and treatment strategies tailored for each person.

[Learn More >>](#)

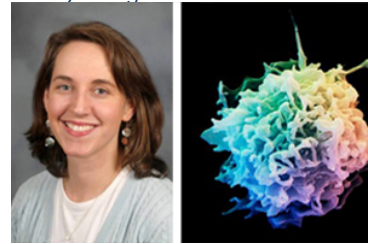
Wendelin Nelson, Pharm D, BCOP has been recognized by the Oncology Nursing Society (ONS), as the recipient of the **2015 ONS Susan Baird Excellence in Clinical Writing Award**. Wendelin is being recognized as the first author for her article entitled "Development of a Policy and Procedure for Accidental Chemotherapy Overdose" that appeared in the August 2014 issue of *Clinical Journal of Oncology Nursing*. The award will be presented to Dr. Nelson during the ONS Annual Congress April 23-26, in Orlando, FL.

Edward Snyder, MD has published Hematopoietic Stem Cell Transplantation: A Handbook for Clinicians as an editor of the text.

Maysa Abu-Khalaf, MD, recently participated in a Breast Cancer in the Arab World 2015 conference in Amman, Jordan as a moderator and a panelist. The Jordan Breast Program under the leadership of HRH Princess Dina Mired organized the conference.

The Yale Palliative Care Program was very well represented at the **American Academy of Palliative Medicine** held in Philadelphia in February 2015. We presented 5 one-hour talks and 2 posters.

T-Cells are one of our most powerful tools in fighting infections in our bodies. As these cells become exhausted, they cannot target cancer. Dr. Susan Kaech, Associate Professor of Immunobiology, is trying to change that. She and her team recently discovered a possible way to prevent this fatigue to enhance the body's ability to fight illness.



[Read More >>](#)

At 6 PM today, Nancy DuBrule-Clemente, of Natureworks Horticultural Services, will be joining Dr. Steven Gore, Director of Hematologic Malignancies at Smilow Cancer Hospital, on Yale Cancer Center Answers to discuss how plants and gardens can be therapeutic for cancer patients.

The radio interview is a prelude to the Smilow Wellness Workshops presentation on "The Healing Power of Plants" on Thursday, where participants can learn the healing power of plants, herbs, and flowers in everyday life.



[Read More >>](#)

Led by Yale Cancer Center researchers, a recent comprehensive genomic analysis of more than 700 brain tumors revealed that some genetic mutations may mean a better

Posters:

Ketamine Infusion as Adjunctive Therapy in Opioid Refractory Vaso-occlusive Sickle Cell Pain Crises.

Anu Paul, MBBS, Laura Morrison, MD, Andrew Putnam, MD

An intervention to improve knowledge of care options and self-management among women with breast cancer.

Dena Schulman-Green, Shelli Feder, Sangchoon Jeon

One-hour concurrent sessions:

Leslie Blatt and Susan Crawford: "Palliative Care in the Seriously Mentally Ill"

Leslie Blatt, Susan Crawford, Jane Jeuland and Jennifer Kapo: "Building a Successful Interdisciplinary team-Learning to love conflict"

Drs. Kapo and Morrison presented:

Concurrent session: "Training Fellows to Be Leaders: Ensuring the Future of Palliative Care (FR401)"

Dr. Morrison presented:

Preconference session: "Fellowship Directors' Program-What Keeps us Awake at Night: Addressing the Challenges of Palliative Medicine Fellowship Programs as the Next Accreditation System and the Match Become Reality (P04)."

Concurrent session: "Add Your Voice: Vetting the Entrustable Professional Activities for HPM Physicians (TH335)."

Research in the News

Too much of a bad thing can be good in brain tumors

DNA mutations can cause cancer but in some cases, more mutations may mean a better prognosis for patients. A Yale-led comprehensive genomic analysis of more than 700 brain tumors has revealed one such subtype of the most malignant brain tumor, called glioblastoma, or GBM. This subtype possesses thousands of tumor-specific DNA errors or mutations instead of dozens observed in most glioblastoma cases. It is also associated with longer survival.

The findings, reported in *Journal Neuro-Oncology*, suggest it may be possible to develop personalized treatments for more aggressive forms of brain cancer, including immunotherapy for these hyper- or ultra-mutated tumors, said Murat Günel, professor and chair of neurosurgery, who leads the Yale Program in Brain Tumor Research at Yale and Smilow Cancer Hospital at Yale-New Haven.

[Read More >>](#)

prognosis for patients with glioblastomas, an subtype of aggressive, malignant brain tumors. According to Dr. Murat Günel, who leads the Brain Tumor Research Program, these findings suggest that it may be possible to develop personalized treatments for the more aggressive forms of brain cancer.





[Read More >>](#)


Follow Yale Cancer Center on Twitter


Follow us on [twitter](#)

LATEST TWEETS:

 #immunotherapy unmasks the tumor for the villain it really is. See what Yale is doing about it <http://bit.ly/1pi9MKO> #CancerFilm

 #immunotherapy one of the most exciting frontiers in #cancer research and treatment <http://bit.ly/1pi9MKO> #CancerFilm

 Most don't know cancer is many different diseases #molecularprofiling @YaleTomLynch <http://bit.ly/18c7h7X> #PrecisionMedicine #CancerFilm

 #epidemiology and behavior are the underpinnings of #cancerprevention <http://bit.ly/1BOD4Dd> #CancerFilm

Combination therapy boosts antiviral response to chronic infection

A Yale-led team has identified a promising new combination immunotherapy to enhance the body's ability to fight chronic viral infections and possibly cancer.

Their study was published March 23 in Nature Medicine. Viruses that cause chronic infection, such as HIV and Hepatitis B and C, are able to persist in the body despite attack from T cells, the body's main line of defense against pathogens. They persist because, over time, our T cells weaken to the point of "T-cell exhaustion." To circumvent this process, the research team - led by Susan Kaech, associate professor of immunobiology at Yale School of Medicine - investigated two pathways that cause T cell suppression.

[Read More >>](#)

Save the Date

Palliative Care Research Retreat

Please mark Wednesday, April 29th from 8-1 on your calendars for a Palliative Care Research Retreat at the West Campus. The goals of which are to bring palliative care researchers from across Yale's campus and from multi-disciplines to share their work and to identify potential collaborators. For more information, or to RSVP, please contact [Lisa Arnel](#).


CPC Retreat

Please plan to join your colleagues in Cancer Prevention and Control for a Retreat on Catchment on Wednesday, July 15 from 10-2 in the Boyer Center for Molecular Medicine. Listen to presentations of research happening in YCC's catchment area of New Haven and Connecticut and participate in a discussion of how to increase research initiatives in our catchment area. Please provide a tentative RSVP for planning purposes by Friday, April 10th to [Christina Dreyfus](#).

YCC/Yale Affinity Group Welcome Staff to Lunch

The Yale Affinity Group will partner with the Yale Latino Networking Group to host Dr. Miguel Materin for a lunchtime talk on May 7 at noon, which is open to all Yale faculty and staff. Dr. Materin will discuss his journey to Yale from Argentina and discussing your research and specialty along with statistics specific to the Latino demographic.

[Learn More >>](#)

 Quitting smoking is hard. Smokers do not have to go it alone. There are great programs <http://bit.ly/1akN95t> @YNHH @YaleMed #CancerFilm

Closer to Free

closer to free

The fund to advance cancer research and enhance patient care

Events

April 5; 6:00 PM Yale Cancer Center Answers

WNPR
Pediatric Oncology
Alyssa Le, MD
[Read More >>](#)

April 6; 12:00 PM Cancer Metabolism Interest Group Meeting

Giarman Room, SHMB-201
[Read More >>](#)

April 6; 12:00 PM Epigenetics Interest Group Meetings

BCMM 206/208
[Read More >>](#)

April 7; 9:30 AM Pathology Research in Progress Talks

TAC N-107
TBA
Shang Min-Zhang, PhD and Alex Ryder, MD
[Read More >>](#)

April 7; 12:00 PM Yale Cancer Center Grand Rounds

55 Park Street Auditorium
Integrating Genetics, Genomics, and Systems Biology Towards a More Personalized Medicine
Jeffrey Trent, PhD

Development Update

Yale-New Haven Hospital Office of Development secured approximately \$2.5M in gifts directed to cancer clinical research and patient care programs in the first quarter of FY 2015. These gifts from grateful patients, estate planning, grateful families and other sources were directed to several areas including breast cancer, thoracic oncology, hematology, prostate and urologic cancers and other programs and funds. Please contact Kevin Walsh or Alison Marcinek at the Hospital, or Katie Schutt at Yale Cancer Center, for more information on the grateful patient program and ways to engage prospective donors.

Funding and Award Opportunities

Alex's Lemonade Stand Foundation Infrastructure Grants

We understand the expense of labor intensive pediatric clinical trials. The **Infrastructure Grant** is designed to help an institution build capacity for and maintain a pediatric oncology Phase I and II clinical trials program by providing funding for adequate staffing, patient care, data management, etc.

Application Deadline: April 10, 2015

[Learn More >>](#)

NCCN Request for Proposals (RFP): Phase I/II Clinical Trials and Pre-Clinical Trials of Enzalutamide for Endometrial Cancer

Funds of \$450,000 are still available to support novel preclinical and clinical studies of enzalutamide in patients with endometrial cancer. Pre-clinical laboratory and correlative/translational studies investigating the clinical relevance of AR expression to disease biology and progression or mechanisms of resistance to enzalutamide will also be considered. Clinical trials and preclinical studies involving rational enzalutamide combination approaches will be considered if supported by strong mechanistic rationale.

Application Deadline: April 27, 2015

[Learn More >>](#)

Alex's Lemonade Stand Foundation "A" Awards

Designed for early career scientists with an original project who can demonstrate outstanding mentorship and have a strong future commitment to pediatric cancer investigation. The grant is open to MD, MD/PhD and PhD

[Read More >>](#)

April 9; 9:00 AM Therapeutic Radiology Grand Rounds

YNHH Max Taffel Room
Radiation Emergencies
Nicholas Dainiak, MD

[Read More >>](#)

April 9; 12:00 PM Yale Cancer Center Schwartz Rounds

55 Park Street Auditorium
When a Patient Wants to Chart Her Own Course

Andrew Putnam, MD

[Read More >>](#)

April 9; 12:30 PM Pathology Grand Rounds

LMP 1049
Capturing Cellular and Molecular Mechanisms of Skin Regeneration and Cancer by Live Imaging
Valentina Greco, PhD

[Read More >>](#)

April 9; 12:30 PM Yale Cancer Center Workplace Survey Results

55 Park Street Seminar Room

[Read More >>](#)

April 14; 12:00 PM Yale Cancer Center Grand Rounds

55 Park Street

TBD

Tarek Fahmy, PhD and Andrew Putnam, MD

April 14; 5:00 PM Transforming Healthcare Grand Rounds

Fitkin Amphitheater, LMP 1094
Why is Patient Safety so Hard?
Mary Dixon Woods, DPhil

[Read More >>](#)

April 14; 5:00 PM Breast Clinical Lecture Series

Breast Cancer Conference Room
Immunotherapy for Breast Cancer
Lajos Pusztai, MD

[Read More >>](#)

investigators. Maximum of \$450,000 awarded over three years.

Application Deadline: May 22, 2015

[Learn More >>](#)

Simons Foundation Faculty Scholars Competition

The Simons Foundation, Howard Hughes Medical Institute (HHMI) and the Bill & Melinda Gates Foundation are pleased to announce the Faculty Scholars Competition, a national competition for grants to outstanding early-career scientists.

The three philanthropies will award a total of \$148 million over the program's first five years, awarding up to 70 grants every two and a half to three years. The awards are intended for basic researchers and physician scientists who have already demonstrated significant research accomplishments and show potential to make unique and important contributions to their fields.

The Faculty Scholars Competition marks the first time that HHMI, the Bill & Melinda Gates Foundation and the Simons Foundation have formally undertaken an initiative together.

Application Deadline: July 28, 2015

[Learn More >>](#)

Recent Publications

Pulmonologist Involvement, Stage-Specific Treatment, and Survival in Adults with Non-Small Cell Lung Cancer and COPD.

Deepak JA, Ng X, Feliciano J, Mao L, Davidoff AJ.
Ann Am Thorac Soc. 2015 Mar 11.

[Read More >>](#)

Patient cost sharing and receipt of erythropoiesis-stimulating agents through medicare part d.

Davidoff AJ, Hendrick FB, Zeidan AM, Baer MR, Stuart BC, Shenolikar RA, Gore SD.

J Oncol Pract. 2015 Mar;11(2):e190-8.

[Read More >>](#)

Lineage factors and differentiation states in lung cancer progression.

Cheung WK, Nguyen DX.

Oncogene. 2015 Mar 30.

[Read More >>](#)

April 15; 1:00 PM Cancer Immunology Research Program Seminar

C-304

*Friend or Foe: Metabolic Checkpoints
of Tumor Reactive*

T Cells

Ping-Chih Ho, PhD

[Read More >>](#)

Submissions

Please submit your recent publication and grant announcements to:

Renee Gaudette

Director, Public Affairs and
Marketing

renee.gaudette@yale.edu

 Forward to a Friend

Niche-induced cell death and epithelial phagocytosis regulate hair follicle stem cell pool.

Mesa KR, Rempel P, Zito G, Myung P, Sun TY, Brown S, Gonzalez DG, Blagoev KB, Haberman AM, Greco V. Nature. 2015 Apr 6.

[Read More >>](#)

High-dose-rate vaginal brachytherapy with chemotherapy for surgically staged localized uterine serous carcinoma.

Damast S, Higgins SA, Ratner E, De Leon MC, Mani S, Silasi DA, Azodi M, Santin A, Rutherford T, Schwartz PE. J Contemp Brachytherapy. 2015 Feb;7(1):35-40.

[Read More >>](#)

Muscle-building supplement use and increased risk of testicular germ cell cancer in men from Connecticut and Massachusetts.

Li N, Hauser R, Holford T, Zhu Y, Zhang Y, Bassig BA, Honig S, Chen C, Boyle P, Dai M, Schwartz SM, Morey P, Sayward H, Hu Z, Shen H, Gomery P, Zheng T. Br J Cancer. 2015 Mar 31;112 Suppl:1247-50.

[Read More >>](#)

The five steps of comprehensive psychosocial distress screening.

Lazenby M, Tan H, Pasacreta N, Ercolano E, McCorkle R. Curr Oncol Rep. 2015 May;17(5):447.

[Read More >>](#)

National utilization patterns of Mohs micrographic surgery for invasive melanoma and melanoma in situ.

Viola KV, Rezzadeh KS, Gonsalves L, Patel P, Gross CP, Yoo J, Stamell E, Turner RB. J Am Acad Dermatol. 2015 Mar 27.

[Read More >>](#)

The evolving role of adjuvant radiotherapy for elderly women with early-stage breast cancer.

Rutter CE, Lester-Coll NH, Mancini BR, Corso CD, Park HS, Yeboa DN, Gross CP, Evans SB. Cancer. 2015 Mar 24.

[Read More >>](#)

Immune therapy of metastatic melanoma developing after allogeneic bone marrow transplant.

Cecchini M, Sznol M, Seropian S. J Immunother Cancer. 2015 Mar 24;3:10.

[Read More >>](#)

Characteristics of Multifocal and Multicentric Breast Cancers.

Kanumuri P, Hayse B, Killelea BK, Chagpar AB, Horowitz NR, Lannin DR.

Ann Surg Oncol. 2015 Mar 25.

[Read More >>](#)

Weekly ixabepilone with or without biweekly bevacizumab in the treatment of recurrent or persistent uterine and ovarian/primary peritoneal/fallopian tube cancers: A retrospective review.

Roque DM, Ratner ES, Silasi DA, Azodi M, Rutherford TJ, Schwartz PE, Nelson WK, Santin AD.

Gynecol Oncol. 2015 Mar 17.

[Read More >>](#)

A Series of Malignant Ovarian Cancers Arising From Within a Mature Cystic Teratoma: A Single Institution Experience.

Black JD, Roque DM, Pasternak MC, Buza N, Rutherford TJ, Schwartz PE, McCarthy S, Ratner E.

Int J Gynecol Cancer. 2015 Mar 18.

[Read More >>](#)