

DirectConnect

Inside Yale Cancer Center

August 8, 2014

Announcements

Roy Herbst Honored at International Lung Cancer Congress



I am proud to announce that the Bonnie J. Addario Lung Cancer Foundation (ALCF) honored Dr. Roy S. Herbst last week for his leadership and expertise in lung cancer treatment and research during the 15th International Lung Cancer Congress. Each year the ALCF recognizes one individual who is making great strides to eradicate lung cancer and fight for the lives affected by this disease. Dr. Herbst's national leadership, dedication, and contributions to lung cancer research and treatment deserve this outstanding recognition.

[Read More >>](#)

SU2C Team Visit

On August 12, members of the Stand Up to Cancer Melanoma-MRA Dream Team will unite at the West Campus Conference Center for their annual review. The goal of the SU2C-MRA Melanoma Dream Team Translational Cancer Research Grant, led by Jeffrey M.

from the desk of

Thomas J. Lynch, Jr., MD

Director, Yale Cancer Center

Physician-in-Chief Smilow Cancer Hospital at Yale-New Haven



Recent News

Read recent articles featuring experts from Yale Cancer Center

[News Center >>](#)

LATEST ARTICLES:



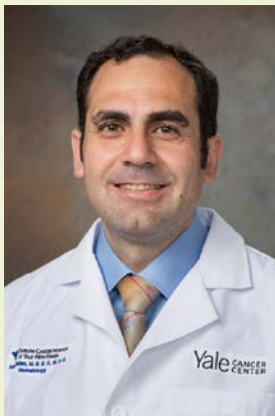
Beauty With Wigs at New Haven's Smilow Cancer Hospital

[Read More >>](#)



Super Saturday: What is Woman to Woman?

Trent, PhD, President and Research Director of TGen, and Patricia M. LoRusso, DO, Professor of Medicine (Medical Oncology) and Associate Director of Innovative Medicine at Yale Cancer Center, is to use next-generation sequencing technology to examine both the normal and cancer genome of patients with metastatic melanoma. Patients whose melanoma tumors do not have BRAF alterations will have other specific genetic alterations identified and these changes will be matched to an appropriate therapy that directly targets those alterations. The hope is that this "personalized medicine" approach will lead to more effective and lasting treatments and potentially spare patients from unnecessary treatments that are expensive, highly toxic and all too often provide little or no benefit.



Amer Zeidan Appointed in Hematology

I am pleased to announce the appointment of Amer Zeidan, MBBS, MHS, as Assistant Professor of Medicine (Hematology). Dr. Zeidan has completed a hematology/oncology fellowship and a clinical research fellowship in myelodysplastic syndromes at Johns Hopkins University where he also earned a Master of Health Science

(MHS) degree in Clinical Investigation.

Dr. Zeidan received his MBBS degree from the Faculty of Medicine, University of Jordan, Amman, Jordan before completing his internal medicine residency at Rochester General Hospital, Rochester, NY.

Dr. Zeidan's clinical interest is in the management of hematologic malignancies. The focus of his clinical/translational research is the development of novel therapies for myelodysplastic syndromes and myeloid hematologic malignancies. Dr. Zeidan will be working with Dr. Steven Gore, Director of Hematological Malignancies, to design and conduct early phase clinical trials in refractory myeloid malignancies. In addition, Dr. Zeidan also has an interest in effectiveness and outcomes research in hematologic malignancies and will be working with Dr. Amy Davidoff and Dr. Xiaomei Ma in the Cancer Outcomes, Public Policy, and Effectiveness Research (COPPER) Center.

Smilow Named MDS Center of Excellence

Under the leadership of Dr. Steven Gore, Director of Hematological Malignancies, the Myelodysplastic

[Read More >>](#)



Calming Riverine Views Flow Into Cancer Center

[Read More >>](#)

Follow Yale Cancer Center on Twitter

Follow us on [twitter](#)

LATEST TWEETS:

To grill or not to grill? BBQs are a staple of summer but technique is key in cancer prevention: <http://bit.ly/1AWC6rM> #CancerPrevention

in his role via @aacr @DrRoyHerbstYale tells @KimPainter @usatoday too many cancer survivors still smoking.

We have been named a Center of Excellence by @MDSFoundation. Learn more <http://www.mds-foundation.org/about-the-mds-foundation/> ... @YNHH

Dr. Lieping Chen named by @CancerResearch 2014 William B. Coley Award winner for his critical work in immune therapy.

Congratulations to @DrRoyHerbstYale for receiving #ALCFLectureAward for leadership in #lungcancer @YNHH @YaleMed

Join Yale Cancer Center on Facebook

Syndromes (MDS) Foundation has named Smilow Cancer Hospital/Yale Cancer Center a Center of Excellence. To achieve this status, our institution had to achieve excellence in our MDS program with available cytogenetics and/or molecular genetics, ongoing research, IRB-approved clinical trials, and peer-reviewed publications in the field.

Ophthalmic Oncology Suite Opens

The Ophthalmic Oncology Suite at Smilow Cancer Hospital officially opened on the 8th floor of Smilow last week. Led by Dr. Miguel Materin, the program focuses on diagnosis and treatment of benign and malignant tumors of the eye. The new suite is equipped to perform advanced treatments such as Intra-Arterial Chemotherapy, a minimally invasive alternative to traditional chemotherapy that involves an injection into the blood vessel leading to the tumor. Smilow is one of only eight hospitals nationwide offering this treatment. Dr. Flora Levin joins Dr. Materin to care for patients in the Ophthalmic Oncology Suite.

CME Programs in September

Please join us for two continuing education programs at Smilow Cancer Hospital in September. On Tuesday, September 9th at 5 PM we will host a CME Dinner Symposium highlighting treatment and research advances in Melanoma and Renal Cell Carcinoma and on Friday, September 12th at 8 AM we will host a Symposium at 55 Park Street on Gastrointestinal Cancers. Please register to join us for these two important programs.

[Learn More >>](#)

Cingari Family Boutique Opens at Smilow

Our patients can now access free hairdressing services provided by a licensed cosmetologist Tuesdays and Thursdays from 9am-5pm at the Cingari Family Boutique on the first floor of Smilow or in their room. Services include haircuts and wig consultations and fittings. Patients can make an appointment by calling (203) 200-CARE.

Notables

Lieping Chen, MD, PhD, the United Technologies Corporation Professor of Cancer Research at Yale Cancer Center and Professor of Immunobiology, Dermatology, and Medicine at Yale School of Medicine, has been named a

[Like us on Facebook !\[\]\(870f5d5e9c0d57485634be3ecf52f3ca_img.jpg\)](#)

LATEST POSTS:

The summer is the best time to barbecue. With beautiful weather, it's fun to grill your favorite recipes and enjoy the company of family and friends outdoors. Cooking meats at high temperatures, however, may create heterocyclic amines (HAs) that could increase your risk of cancer, according to recent research.

You don't have to give up your grill to stay healthy. You just need to choose sensible foods and use the right techniques.



[Read More >>](#)

A report published today from the [American Association for Cancer Research \(AACR\)](#) indicates that nearly 10% of cancer patients still smoke nine years after diagnosis. Although smoking most often causes cancer of the lungs, mouth, and/or esophagus, this dangerous habit can increase the risk of developing nearly all types of cancers.



[Read More >>](#)

Have you ever wondered what it is like to conduct research in a Yale Cancer Center lab? Thanks to QVC's "Super Saturday Live" it is possible to have an inside look into the laboratory of Dr. Ryan Jensen. In this video tour, Professor Jensen explains his research aimed at ovarian cancer treatment.

Yale Cancer Center was featured by

2014 William B. Coley Award winner. The Coley award is the top prize given by the Cancer Research Institute at its annual symposium. Dr. Chen will give the 22nd annual William B. Coley lecture during the symposium in New York City this October.

[Learn More >>](#)

The Department of Public Health has released the **2014 Biomedical Trust Fund Award Grants**. Three Yale Cancer Center members have received grant funds: **Stephanie Halene, PhD:** The goal of this project is to identify mechanisms of relapse in patients with acute myeloid leukemia (AML) and to model AML relapse in humanized immunodeficient mice with the ultimate goal to develop and test novel treatments.

Collaborators: Richard Flavell, Anthony Rongvaux, Nikolai Podoltsev, Steven Gore, Natalia Neparidze, Terri Parker, Caroline Cromwell, Alfred Lee, Steven Kleinstein, and Shrikant Mane.

Edward Kaftan, PhD: The goals of this project are to determine the optimal dose and dosing schedule for the protective drugs and to determine the requirement of neuronal calcium sensor 1 (NCS1) in the development of chemotherapy-induced peripheral neuropathy (CIPN).

Collaborators: Barbara Ehrlich and Paul Eder.

Michael Robek, PhD: The purpose of this project is to develop a safe and effective therapeutic vaccine to cure chronic hepatitis B virus (HBV) infection and prevent the complications such as liver cancer that occur as a consequence of this disease.

Collaborator: Michael Rose

Philip Grover has joined Yale Cancer Center as **Program Manager** in the office of Roy S. Herbst, MD, PhD, Associate Director for Translational Research and Chief of Medical Oncology. Philip joins Yale from the University of Hartford where he supported the Dean of the Hart School of Music. Prior to his time in CT, he lived in Philadelphia for 30 years where he held various positions in academia, finance, and administration.

Employee Profile: Susanne Lee-Baldassini

The Employee Profile recognizes the diverse contributions made by Yale Cancer Center and Smilow Cancer Hospital staff to meet our patient care, research, education, and outreach goals. The staff profiled are examples

QVC on Saturday, July 26 as part "Super Saturday Live," a program that helps to raise funds for the Ovarian Cancer Research Fund (OCRF). OCRF actively supports the research in the Jensen Lab in addition to other programs at Yale.



[Read More >>](#)

At last weekend's Music on the Green Festival, Annes Chagpar, MD, MPH, MBA, Director of the Breast Center at Smilow Cancer Hospital at Yale-New Haven and Assistant Director at Yale Cancer Center for Diversity and Health Equity, had a backstage pass to a memorable performance by Salt-n-Pepa, a Grammy Award-winning group.

Pictured here is Anne Worcester, Director of Connecticut Open, Salt-n-Pepa, New Haven Mayor Toni Harp (center), and Dr. Chagpar.



[Read More >>](#)

In addition to the doctors and nurses who work to administer medical treatment, the care provided by friends and family are an important and influential part of the path to wellness. These caregivers provide patience, support, and love. Unfortunately, it is easy to forget that these caregivers can sometimes also be in need of some healing.

A recent article published by the New York Times sheds some light on this extremely important subject. Dr. Fred R. Volkmar, the director of the Child

of the great work being done here, and the dedication and values we possess.

To suggest someone to be profiled, please contact [Emily Fenton](#).

Susanne Lee-Baldassini has been a clinical social worker for 22 years. She has worked in oncology since 2006, first in Radiation Oncology and then on the inpatient unit for Smilow NP-12. After experiencing a cancer diagnosis within her own family, she realized the need for helping others cope with cancer, and saw an opportunity to have a positive impact on someone's cancer journey.



Throughout her social work career, Susanne's goal has always been to be focused and present for both the patient and their families. "There is no issue too small, especially if it is meaningful to the patient and can increase their quality of life in some way," said Susanne. "A lot of times these families are in crisis and the dynamics can be complex. I embrace the challenges and feel privileged to be able to help people in this way."

In addition to working with patients and families, Susanne is involved in the Parenting at a Challenging Time (PACT) program, has participated on several committees, and leads a relaxation group for families to help them deal with stress. Recently, she joined a new initiative called *Social Work Open Hours*, where patients and their families can stop by the Patient and Family Resource Center on NP-1 and talk with a social worker about any questions or concerns, no appointment needed. Susanne commented that the most common issues are depression, anxiety, financial issues, body image, and keeping up with day-to-day activities.

Bonnie Indeck, LCSW, Manager of Oncology Social Work at Smilow Cancer Hospital, commented, "Susanne is very comprehensive in her work, ensuring that our patients and families obtain the guidance and necessary resources to maximize their ability to cope. We are happy that she is part of our team, making a difference in the lives of our patients".

Study Center at Yale School of Medicine, who was quoted in the article, explained the importance of improving how we help caregivers cope with the enormous stresses placed upon them.



[Read More >>](#)

Closer to Free

closer to free

The fund to advance cancer research and enhance patient care

Events

August 10; 6:00PM

Yale Cancer Center Answers

WNPR

Studying Cancer from the Inside Out

Manju Prasad, MD, MBBCh, MBBS

[Read More >>](#)

August 14; 9:00AM

Therapeutic Radiology Grand Rounds

Smilow, LL-412

Immunotherapy of Cancer with PD-

1/PD-L1 Antagonists

Mario Sznol, MD

[Read More >>](#)

August 15; 7:00PM

A Benefit Concert for the Yale Brain Tumor Center

The Ballroom at the Outer Space

Playing for the Cure: Brainstormin'

The Cusano Family

[Read More >>](#)

Funding and Award Opportunities

YALE SPORE in Skin Cancer Career Development Award

The YALE SPORE in Skin Cancer is pleased to announce the availability of a Career Development Award beginning September 15 to provide funds of up to \$60,000 for one year.

The purpose of the Yale SPORE in Skin Cancer Career Development Program is to more clearly focus the career development of the selected individual towards clinically relevant skin cancer biology and to specifically give them the tools to enable their contributing seminal advances in this area, as well as continuity of their individual cancer research programs. It is intended that the beneficiaries of this funding will be well grounded in both the biology of the relevant skin cells and mainstream cancer research, will have distinctive skill and knowledge sets that make them unique and individually fundable and give them a recognized identity in both the traction on the cancer biology "conveyor belt." Accordingly, it will be necessary to tailor each individual's developmental program to his or her particular interests and needs.

Candidates eligible to apply for CDP funding include:

1. Junior faculty holding appointments within the Yale School of Medicine, Nursing, or Epidemiology/Public Health.
2. Candidates for such junior faculty appointments, either currently within the Yale system (e.g., advanced postdoctoral fellows) or being recruited from outside institutions;
3. Established investigators, either within or outside the Yale system, who are committed to re-focusing a substantial component of her/his research on cutaneous study of risk prevention, diagnosis, prognosis or treatment of human cutaneous malignancies.

Application Deadline: August 25, 2014

[Learn More >>](#)

The YALE SPORE in Skin Cancer Developmental Research Awards

The YALE SPORE in Skin Cancer is pleased to announce the availability of Developmental Research Awards

August 17; 6:00PM

Yale Cancer Center Answers

WNPR

Dermatopathology

Rossitza Lazova, MD

[Read More >>](#)

August 21; 9:00AM

Therapeutic Radiology Grand Rounds

Smilow, LL-412

Genetic Landscape of Uterine Serous

Carcinoma, a Biologically Aggressive

Variant of Endometrial Cancer

Alessandro Santin, MD

[Read More >>](#)

Employment Opportunities

Success in any clinical research endeavor, but especially in cancer research, requires the most qualified, dedicated staff, committed to excellence and the mission of Yale Cancer Center. The combination of education, oncology research experience, and exceptional nursing skills is enormously difficult to find. Your participation, as knowledgeable colleagues, is invaluable at this time.

Should you know individuals with outstanding clinical research nursing experience, and who are ready to join our team, please direct resumes to [Sandra Greer](#), Sr. Staffing and Career Development Representative or call (203) 432-5822. All referrals will be held in strictest confidence.

Submissions

Please submit your recent publication and grant announcements to:

Renee Gaudette

Director, Public Affairs and Marketing

renee.gaudette@yale.edu

 Forward to a Friend

beginning September 15 to fund projects in amounts up to \$50,000 for one year.

Developmental Research Program Awards are intended to support a broad spectrum of innovative pilot projects applicable to human skin cancer risk, prevention, diagnosis, prognosis, or treatment. To be funded, DRP projects must have promising translational research potential, i.e., direct application to human skin cancer, and there must be the expectation that they can evolve into, or be incorporated into, full projects with an unequivocal translational component funded either within this SPORE or as independent R01 (or equivalent) grants.

Categories of eligible investigators:

1. Established investigators (with previous and/or current R01 or equivalent funding) whose research to date has not been specifically directed at skin cancer, or even at cancer more generally, but who are interested in exploring the applicability of their expertise to skin cancer;
2. Established investigators in skin cancer who wish to test an innovative, translationally relevant idea clearly distinct from current or pending grants;
3. Junior investigators (holding a faculty appointment higher than that of Postdoctoral Fellow or Research Associate) without current or past R01 (or equivalent) research support who are proposing innovative research in the arena of translational cutaneous oncology.
4. Previous recipients (as Principal Investigators) of SPORE DRP funds are ineligible to be P.I.s of new DRP projects within 3 years of completion of their previous DRP funding.

Application Deadline: August 25, 2014

[Learn More >>](#)

Prostate Cancer Foundation 2014 PCF Global Treatment Sciences Challenge Awards

Grants of up to \$1 million over 2-3 years will be awarded for research projects related to lethal prostate cancer. (PCF expects to fund 5-10 of these awards.) Priority will be given to high risk, first-in-field, and currently unfunded projects. Funding will support the correlative research around either clinical trials of novel agents or strategies of standard of care. The foundation's emphasis is on developing or validating biomarkers that guide therapy in patients or further understanding of the mechanism by which therapies work. While the focus is on research in humans, the actual trials or treatments themselves will not be supported. Human samples are highly preferred, although at times

model systems might be required to complement the understanding of an important mechanism.

Application Deadline: September 22, 2014

[Learn More >> \(PDF\)](#)

Center for Cancer Research Clinical Investigator Development Program

The Center for Cancer Research (CCR), a Division of the National Cancer Institute (NCI), National Institutes of Health (NIH), Department of Health and Human Services (DHHS), is pleased to announce its annual call for applications for Clinical Investigator Development Program (CIDP). This is an exciting training opportunity intended for physicians interested in dedicating their careers to clinical research. Candidates may be U.S. citizens, permanent residents or possess (or be eligible for) the appropriate work visa and must have successfully completed subspecialty training at a U.S.-accredited institution in appropriate fields.

Application Deadline: October 30, 2014

[Learn More >>](#)

Damon Runyon Fellowship Award

The Damon Runyon Fellowship Award is designed to provide early career scientists with resources to hone their cancer research skills and explore their own ideas while working with mentors in top universities and cancer research centers. Awards are intended to support the fellow under direct supervision of the sponsor.

The award provides a stipend of \$50,000 per year for three years for Level I funding, and \$60,000 per year for three years for Level II funding. (Physician-scientists who have completed their residencies, clinical training, and are board eligible will receive Level II funding.) The award may not be used for institutional overhead or indirect costs. Fellows also receive an annual \$2,000 expense allowance for educational and scientific expenses.

Application Deadline: August 15, 2014

[Learn More >>](#)

2014 Rausch Pilot Research Grant from The Edith P. Rausch Fund of The Community Foundation for Greater New Haven

To provide seed money to members of Yale Cancer Center (YCC) to enable investigators to engage in innovative cancer research, with the goal of facilitating new research on the fundamental causes of, or an effective cure for, cancer. We anticipate funding two to three pilot grants. Priorities for the pilot grants include studying and/or

ameliorating sociodemographic disparities in cancer incidence or outcomes; the prevention and/or treatment of women's cancers, as well as neighborhood/urban or other community factors that contribute to cancer etiology. Preference will be given to research that has a high likelihood of having a demonstrable community impact in the Greater New Haven area.

Application Deadline: August 14, 2014

[Learn More >> \(PDF\)](#)

AGA Foundation - 2014 Funderburg Research Award in Gastric Cancer

The American Gastroenterological Association is inviting applications for the 2014 Funderburg Research Award. The award is designed to support an established investigator working on novel approaches in gastric cancer research, including the fields of gastric mucosal cell biology, regeneration and regulation of cell growth (not as they relate to peptic ulcer disease or repair), inflammation (including *Helicobacter pylori*) as precancerous lesions, genetics of gastric carcinoma, oncogenes in gastric epithelial malignancies, epidemiology of gastric cancer, etiology of gastric epithelial malignancies, or clinical research in the diagnosis or treatment of gastric carcinoma. Please note, AGA membership is required at the time of application submission. Funding up to \$100,000 over 2 years.

Application Deadline: August 29, 2014

[Learn More >>](#)

Recent Publications

A carbon nanotube-polymer composite for T-cell therapy.

Fadel TR, Sharp FA, Vudattu N, Ragheb R, Garyu J, Kim D, Hong E, Li N, Haller GL, Pfefferle LD, Justesen S, Harold KC, Fahmy TM.

[Read More >>](#)

Raising the bar for the care of seriously ill patients: results of a national survey to define essential palliative care competencies for medical students and residents.

Schaefer KG, Chittenden EH, Sullivan AM, Periyakoil VS, Morrison LJ, Carey EC, Sanchez-Reilly S, Block SD. Acad Med. 2014 Jul;89(7):1024-31.

[Read More >>](#)

A nucleolytic lupus autoantibody is toxic to BRCA2-deficient cancer cells.

Noble PW, Young MR, Bernatsky S, Weisbart RH, Hansen JE.

Sci Rep. 2014 Aug 5;4:5958.

[Read More >>](#)

Learning Curve to Lymph Node Resection in Minimally Invasive Esophagectomy for Cancer.

Dhamija A, Rosen JE, Dhamija A, Gould Rothberg BE, Kim AW, Detterbeck FC, Boffa DJ.

Innovations (Phila). 2014 Jul 31.

[Read More >>](#)

BRAF-targeted therapy alters the functions of intratumoral CD4+ T cells to inhibit melanoma progression.

Ho PC, Kaech SM.

Oncoimmunology. 2014 Jun 18;3:e29126.

[Read More >>](#)

Nanoparticle-Mediated Combinatorial Targeting of Multiple Human Dendritic Cell (DC) Subsets Leads to Enhanced T Cell Activation via IL-15-Dependent DC Crosstalk.

Sehgal K, Ragheb R, Fahmy TM, Dhodapkar MV, Dhodapkar KM.

J Immunol. 2014 Jul 30. pii: 1400489.

[Read More >>](#)

Automated quantitative multiplex immunofluorescence in situ imaging identifies phospho-S6 and phospho-PRAS40 as predictive protein biomarkers for prostate cancer lethality.

Shipitsin M, Small C, Giladi E, Siddiqui S, Choudhury S, Hussain S, Huang YE, Chang H, Rimm DL, Berman DM, Nifong TP, Blume-Jensen P.

Proteome Sci. 2014 Jul 12;12:40.

[Read More >>](#)

Dual Inhibition of EGFR with Afatinib and Cetuximab in Kinase Inhibitor-Resistant EGFR-Mutant Lung Cancer with and without T790M Mutations.

Janjigian YY, Smit EF, Groen HJ, Horn L, Gettinger S, Camidge DR, Riely GJ, Wang B, Fu Y, Chand VK, Miller VA, Pao W.

Cancer Discov. 2014 Jul 29.

[Read More >>](#)

A mechanistic role for the chromatin modulator, NAP1L1, in pancreatic neuroendocrine neoplasm proliferation and metastases.

Schimmack S, Taylor A, Lawrence B, Alaimo D, Schmitz-Winnenthal H, Büchler MW, Modlin IM, Kidd M. Epigenetics Chromatin. 2014 Jul 21;7:15.

[Read More >>](#)

The Fanconi Anemia Proteins FANCD2 and FANCD1 Interact and Regulate Each Other's Chromatin Localization.

Chen X, Wilson JB, McChesney P, Williams SA, Kwon Y, Longerich S, Marriott AS, Sung P, Jones NJ, Kupfer GM. J Biol Chem. 2014 Jul 28. pii: jbc.M114.552570.

[Read More >>](#)