

July 28, 2017

Announcements

Dr. Renelle Lim Appointed Director of Ocular Oncology

I am pleased to announce the appointment of Dr. Renelle Lim as an Assistant Professor of Ophthalmology and Visual Science at Yale School of Medicine and Director of the Ocular Oncology Program at Smilow Cancer Hospital, effective September 1, 2017.



Dr. Lim is an outstanding addition to our faculty. She graduated from medical school at the State University of New York Downstate Medical School. From there, she completed two separate fellowships at the prestigious Wills Eye Hospital. Her ocular oncology fellowship was under the guidance of Drs. Carol and Jerry Shields, who are the foremost eye tumor specialists in the world and have one of the largest clinical practices and research endeavors in the management of ocular tumors. She continued Wills Eye Hospital and completed a second fellowship in oculoplastic surgery. Her unique training will bring an outstanding level of clinical excellence to Yale and to the Ocular Oncology program at the Smilow Cancer Hospital.

Dr. Lim has clinical interests in uveal melanoma, eyelid and orbital tumors, eyelid reconstruction, and eyelid malposition. She will be available for consultation for all disorders involving cancer in the eye and periocular

from the desk of
Charles S. Fuchs, MD, MPH
Director, Yale Cancer Center
and Physician-in-Chief
Smilow Cancer Hospital

Yale
NewHaven
Health
Smilow Cancer
Hospital

Yale **CANCER**
CENTER
A Comprehensive Cancer Center Designated
by the National Cancer Institute

Recent News

[News Center >>](#)

LATEST ARTICLES:

region, as well as functional and cosmetic plastic surgery.

Anne Doerr Joins YCC

Please welcome Anne Doerr to Yale Cancer Center as Director of Media Affairs. Anne's position will focus on earned media, with the goal of raising our regional and national profile. She has a spectacular background in journalism and many years of successful earned media work, most recently at the Dana-Farber Cancer Institute. I am confident that her experience will help us to increase the awareness and exposure of the exciting research advances and outstanding patient care here at Yale Cancer Center and Smilow Cancer Hospital. Please join me in welcoming Anne to our team.

Notables

Edward Snyder, MD, Professor of Laboratory Medicine and Director of Transfusion Medicine, will receive the **President's Award** from the **American Association of Blood Banks** at this year's annual meeting in San Diego in October. Dr. Snyder is being recognized for his role as a founding member of the AABB Cellular Therapy Section and for his work in this area.

Dr. Roy Herbst has been named **Vice Chair of the SWOG Lung Committee**. Dr. Herbst will work collaboratively with Dr. Karen Kelly, Chair of the committee, to continue to push clinical trials for lung cancer forward and to develop more innovative trials for our patients.

Manoj Pillai, MD, Associate Professor of Medicine (Hematology), has received an **R01 grant** from the NIH to support his project "Deregulation of SF3B1 function by recurrent HEAT domain mutations." The research will study mechanisms by which mutations in the RNA splicing protein SF3B1 result in Myelodysplastic Syndrome (MDS), a pre-leukemic blood disease. The \$1.675 million grant also includes co-investigators **Karla Neugebauer, PhD** (MB&B) and **John Hwa, MD, PhD** (Cardiology).



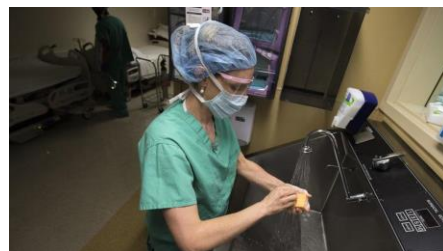
Vince DeVita's Oncology Opus: Medicine and music share center stage in storied career

[Read More >>](#)



Inspiring patient gives new meaning to the term "medical history"

[Read More >>](#)



Female Surgeons Making Inroads In Male-Dominated Operating Rooms

[Read More >>](#)

Herta Chao, MD, PhD, Associate Professor of Medicine (Medical Oncology), received a **Medicine Service Line Award** from the **VA New England Healthcare System** in recognition of her successful leadership of the Oncology Clinical Trials Program at the VA Connecticut.

Philip W. Askenase, MD, Professor of Medicine (Immunology), has been awarded the **2018 Distinguished Scientist Award** by the **American Academy of Allergy, Asthma and Immunology (AAAAI)**. The award is presented annually to recognize scientific contributions to allergy and immunology research that have advanced the field and will improve patients' lives. Dr. Askenase is the first faculty member from Yale School of Medicine to achieve this recognition.

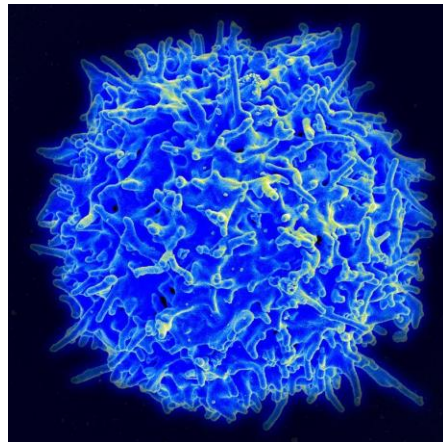
Dr. Lisa Fucito, Associate Professor in Department of Psychiatry and the Director of the Tobacco Treatment Service at Smilow Cancer Hospital, received the **Distinguished Faculty Supervisor Award** from the **Department of Psychiatry**, section of psychology, during their annual commencement ceremony. The award honors her as an outstanding supervisor for her work with fellows in Yale-New Haven Hospital's Behavioral Medicine placement.

Development Update



Dr. Ali Ather, Director of the Integrative Medicine Program at Smilow

On June 21, Looking Forward held its 21st annual fashion show and fundraising dinner in support of Integrative Medicine services at Smilow Cancer Hospital. There, they presented a check for \$250,000 supporting expansion of services and educational



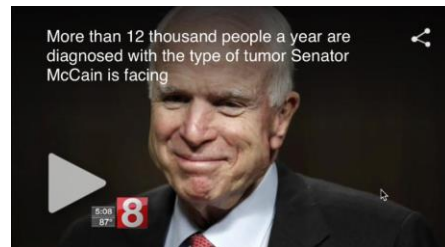
FDA Gives A Nod To "Paradigm Shifting" Cancer Treatment

[Read More >>](#)



"Randy's Riders" to Cross Closer to Free Finish Line in Honor of Loved One

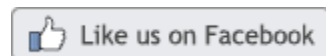
[Read More >>](#)



More than 12 thousand people a year are diagnosed with the type of tumor Senator McCain is facing

[Read More >>](#)

Join Yale Cancer Center on Facebook



LATEST POSTS:

support for the program. Support from Looking Forward has benefitted over 50,000 patients over the years. Looking Forward support patients at both the York Street and St. Raphael campuses, providing free of charge programs to patients and their families that include yoga, massage, art therapy, nutrition, wellness programs, and the Looking Forward Wig Program at the Cingari Boutique.

[Learn More >>](#)



Over 144 golfers came together on June 3 in memory of Rob Stoffel, who passed away from melanoma last summer. The event donated \$15,000 in support of Dr. Harriet Kluger's research in melanoma. Dr. Kluger was the recipient of the Established Investigator Award from the foundation.

Employee Profile: Tanaz Mistry

On the 11th floor of Smilow Cancer Hospital, Tanaz Mistry, RN, OCN, handles both clinical and managerial

We would like to give a warm welcome to our new class of Medical Oncology-Hematology Fellows. Our program, designed to raise the next generation of academic oncologists battling cancer both in the laboratory and in the clinic, put students through three years of intensive clinical and research work designed to give them the multidisciplinary skills needed to effectively fight cancer. Congratulations and welcome to our promising new class!

Welcome to our new class of Medical Oncology-Hematology Fellows!



[Read More >>](#)

Tune in to Yale Cancer Answers for an interview with Dr. Steven Gore and Dr. Amy Justice, Professor of Medicine and of Public Health and Principal Investigator on the Veterans Aging Cohort Study, and Dr. Tamar Taddei, Associate Professor of Medicine. Their discussion will focus on cancer risk among veterans, particularly the increased risk of liver cancer.



Assessing the Risk of Cancer in Veterans

Hosted by: Steven Gore, MD
*Director of Hematologic Malignancies,
 Professor of Internal Medicine*

Guests: Amy Justice, MD, PhD
*Professor of Medicine
 and of Public Health
 Yale School of Medicine*

Tamar Taddei, MD
*Associate Professor of
 Medicine
 Yale School of Medicine*

[Read More >>](#)

When Sierra Hajek's mother received her breast cancer diagnosis earlier this year, Sierra knew that she wanted to help out in whatever way she could. Her mother Lara had been planning on riding in the upcoming Closer to Free ride, but chemotherapy

tasks as the Assistant Patient Services Manager of the inpatient Hematology and Bone Marrow Transplant unit. Patients on the unit are receiving mostly chemotherapy treatments and stem cell transplants, and are being monitored for any adverse events. Tanaz oversees the day to day management of the unit, and assists with chemotherapy orders and complex patients. Tanaz has been instrumental in improving the flow of discharges and admissions on NP 11.



"Patients can be with us as long as 3-4 weeks, depending on the treatment they are receiving and how they are responding," said Tanaz. "We get to know them really well, and they get to know us. It makes losing a patient that much harder, but I can't imagine myself doing anything else. It is such an honor to care for this patient population, and it makes you appreciate the little things in your own life."

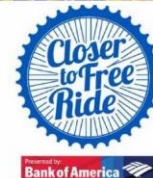
Tanaz has been a nurse for 16 years and grew up at Yale, where she worked as a student nurse and stayed on after graduating. There are three different teams on the floor, Transplant, Hematology and the Advanced Practice Providers (APP's), and Tanaz commented that they all provide exceptional care, which the patients take notice of. "We have an incredible nursing team on the unit that provides great compassionate care and that is what makes it wonderful to be on NP 11."

Jill Williams, RN, Patient Services Manager on the floor, commented, "Tanaz is a special person who is extremely devoted to our unit and to our patients. She is someone who never forgets that each room is occupied by an individual with their own story. Additionally, her management skills are excellent and I can't imagine the unit without her, she is such an integral part of NP 11."

Funding Opportunities

treatments will prevent her from doing so. In order to show her support for her mother, Sierra decided to ride in her place.

First time
Closer to Free
rider to honor
mother, who
recently
received a
breast cancer
diagnosis.



[Read More >>](#)

If you're going to be out in the sun (especially for an extended period of time), you should be wearing a broad-brim hat to protect your face, ears, and neck from harmful exposure.

Though baseball caps can be tempting, they don't quite cover enough, according to Dr. David Leffel, a member of the Melanoma Program here at Smilow Cancer Hospital. "The majority of skin cancers are on the head and neck, so a brimmed hat that protects the ears as well as the nose is important," he said.

Sun Safety Tip

Wear broad-brim hats that ensure protection for your ears, nose, and neck!



[Read More >>](#)

An avid hiker, Leslie Riley wouldn't let treatment for her aggressive sarcoma keep her from doing what she loves. A week before surgery, though feeling weak from chemo and radiation, she climbed Camel's Hump Mountain in Vermont. Since surgery, she's back to riding her bike four times a week and has already reached another personal milestone: climbing Bear Mountain.

ACS-MRA Research for Proposals/Multidisciplinary Team Award

To facilitate research focused on prevention, risk, early detection, and management of short- and long-term immune-related adverse events (irAEs) associated with FDA-approved or late-stage development checkpoint cancer immunotherapies for melanoma and other cancers.

Deadline for LOI: August 1, 2017

[Learn More >>](#)

Utilizing the PLCO Biospecimens Resource to Bridge Gaps in Cancer Etiology and Early Detection Research (U01)

This (FOA) encourages the submission of applications that propose to advance research in cancer etiology and early detection biomarkers, utilizing the advantages of the unique biorepository resources of the NCI-sponsored PLCO Screening Trial.

Application Deadline: August 15, 2017

[Learn More >>](#)

Department of Defense Breast Cancer Research Program Funding Opportunities for 2017:

Breakthrough Award

Deadlines for Full Applications:

Level 3 & 4 Due: August 31, 2017

Innovator Award

Deadline for Application: August 31, 2017

Distinguished Investigator Award

Deadline for Application: August 31, 2017

[Learn More>>](#)

Department of Defense Prostate Cancer Research Program Funding Opportunities for 2017:

Clinical Consortium Award

LOI Due: August 24, 2017

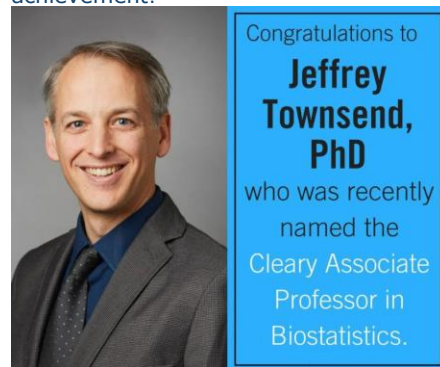
Prostate Cancer Pathology Resource Network Award

"I feel terrific about myself when I finish those climbs. I have learned to be more patient, to let the small things go," she said. "I don't dwell in the past or anticipate the future. I live in the present, grateful for every minute, every breath."



[Read More >>](#)

We are proud to report that Yale Cancer Center member Jeffrey Townsend, PhD, has been named the Cleary Associate Professor in Biostatistics. Congratulations, Dr. Townsend, on this well-deserved achievement!



[Read More >>](#)

We just hit 30,000 followers! We'd like to thank you each and every person who visits our page, likes our posts, and interacts with us on Facebook. We appreciate each of you, and it's a pleasure to keep you updated on what's going on at Yale Cancer Center and

LOI Due: August 24, 2017

[Learn More>>](#)

Alex's Lemonade Stand Foundation Nurse Researcher Grants

ALSF's Nurse Researcher Grants program is dedicated to improving the quality of life for young cancer patients and their families by supporting studies to discover better ways to care for children undergoing treatment. This year, ALSF is offering two grants:

Discovery Grant

Application deadline: August 21, 2017

Nurse Researcher Fellowship

Application deadline: September 25, 2017

[Learn More>>](#)

Elsa U. Pardee Foundation Request for Proposals

The Pardee Foundation provides support to investigators in U.S. nonprofit institutions proposing research aimed at identifying new treatments or cures for cancer.

Application Deadline: August 31, 2017

[Learn More >>](#)

NIH Director's Pioneer Award Program (DP1)

The DPA complements NIH's traditional, investigator-initiated grant programs by supporting individual scientists of exceptional creativity.

Application Deadline: September 1, 2017

[Learn More >>](#)

Leukemia & Lymphoma Society's (LLS) Career Development Program (CDP)

LLS offers career development awards to postdoctoral fellows as well as early career, independent investigators. This year the application will be completed in 3 phases.

Deadlines:

Eligibility: September 1st

Abstract: September 15th

Smilow Cancer Hospital.



[Read More >>](#)

Follow Yale Cancer Center on Twitter

Follow us on [twitter](#)

LATEST TWEETS:

Looking for something fun to do this weekend? Join #Smilow#Cancer Screening & Prevention at a #HealthyCT event <http://bit.ly/2u1Ws3s>

Vince DeVita's Oncology Opus. Fantastic read via @medpagetoday@DeVitaDoctor

Looking for a #cancer support group to join? Check out what our team at #Smilow has to offer you and your loved ones <http://bit.ly/2uMgoeL>

There are a # of #clinicaltrials at Smilow for #braincancer using novel approaches w drugs & in some cases radiation

Read about Leslie's triumphant climb to overcome a rare and aggressive #sarcoma <http://bit.ly/2uyLOVD> #SarcomaAwareness

Paradigm Shifting #Cancer Treatment "educating the T Cells to target ...cancer cells" Dr. Gore @YaleCancer #tcell

Full Application: October 3rd

[Learn More >>](#)

SU2C Dream Team Translational Cancer

Research Grant

SU2C is inviting proposals for a new \$10 million Dream Team of top scientific investigators searching for new strategies to prevent or treat cancer. The new \$10 million grant is open to any type of translational cancer research.

Letter of Intent Due: September 5, 2017

[Learn More >>](#)

Gilead Sciences Research Scholars Program in Hematology/Oncology

The Gilead Sciences Research Scholars Programs provide financial support to junior faculty researchers for a 2-year period.

Application deadline: September 8, 2017

[Learn More>>](#)

Department of Defense

Lung Cancer Research Program Funding Opportunities for 2017:

Career Development Award

Letter of Intent Due: September 13, 2017

[Learn More >>](#)

The Pancreatic Cancer Detection Consortium (U01)

This FOA invites applications from multi-disciplinary teams of researchers and clinicians to establish the Pancreatic Cancer Detection Consortium (PCDC) to conduct research to improve the detection of early stage pancreatic ductal adenocarcinoma (PDAC) and characterization of its precursor lesions.

Application Deadline: September 21, 2017

[Learn More >>](#)

Recent Publications

"Ferla is unfazed by any of this, perhaps because she used to be a nurse - during WW II." <http://bit.ly/2tbaSme> Amazing via @YaleCancer

Thanks to the @EasternTrek cancer run participants who distributed Comfort Bags to patients at the @YaleCancer at Saint Francis.

Closer to Free

closer to free

The fund to advance cancer research and enhance patient care

Calendar of Events

July 29; 10AM

Smilow Screening & Prevention Event

Paradise Green, Stratford

Screen to Save Initiative / 5th Annual Get Healthy CT National Dance Day Celebration

[Read More >>](#)

July 30; 7:30PM

Yale Cancer Answers

WNPR 90.5

Cancer Research in Action

Mark Lemmon, PhD, FRS

[Read More >>](#)

August 3; 8:30AM

Medical Grand Rounds

LMP 1094

Poison for Profit: Navigating the Path From Fee for Service to Value-Based Cancer Care

Scott Huntington, MD, MPH, MSc

[Read More >>](#)

August 4; 12PM

YNHH Event

Park Street Seminar Room

Environmental influences in the etiology of colorectal cancer: the premise of metabolomics.

Rattray NJW, Charkoftaki G, Rattray Z, Hansen JE, Vasiliou V, Johnson CH.

Curr Pharmacol Rep. 2017 Jun;3(3):114-125.

[Read More >>](#)

Targeted Yttrium 89-Doxorubicin Drug-Eluting Bead-A Safety and Feasibility Pilot Study in a Rabbit Liver Cancer Model.

Ludwig JM, Xing M, Gai Y, Sun L, Zeng D, Kim HS.

Mol Pharm. 2017 Jul 25.

[Read More >>](#)

Role of MRI in the Use of an Absorbable Hydrogel Spacer in Men Undergoing Radiation Therapy for Prostate Cancer: What the Radiologist Needs to Know.

Sheridan AD, Nath SK, Huber S, Rosasco S, Weinreb JC, Israel GM.

AJR Am J Roentgenol. 2017 Jul 25:1-3.

[Read More >>](#)

Exposure-Response Analyses of Ramucirumab from Two Randomized, Phase III Trials of Second-Line Treatment for Advanced Gastric or Gastroesophageal Junction Cancer.

Taberero J, Ohtsu A, Muro K, Van Cutsem E, Oh SC, Bodoky G, Shimada Y, Hironaka S, Ajani JA, Tomasek J, Safran H, Chandrawansa K, Hsu Y, Heathman M, Khan A, Ni L, Melemed AS, Gao L, Ferry D, Fuchs CS.

Mol Cancer Ther. 2017 Jul 17.

[Read More >>](#)

Clinical evaluation of combined azacitidine and entinostat on the induction of fetal hemoglobin in patients with acute myeloid leukemias and myelodysplastic syndromes.

Press KR, Uy N, Keefer J, Gore SD, Carraway HE, Sakoian S, Prebet T.

Leuk Lymphoma. 2017 Jul 25:1-3.

[Read More >>](#)

Reduce Your Weight, Reduce Your Risk

Amy Bragagnini and Cortney Malcher

[Read More >>](#)

August 6; 7:30PM

Yale Cancer Answers

WNPR 90.5

Using Minimally Invasive Techniques to Treat Cancer

Raj Ayyagari, MD

[Read More >>](#)

August 10; 10:30AM

Medical Grand Rounds

LMP 1094

Therapeutic Advances in Non-Small Cell Lung Cancer: From Targeted Therapy to Immunotherapy

Sarah Goldberg, MD, MPH

[Read More >>](#)

August 11; 11AM

Smilow Screening & Prevention Event

YNHH Café

U/V Skin Cancer Awareness Month

[Read More >>](#)

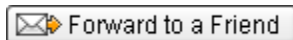
Submissions

Please submit your recent publication and grant announcements to:

Renee Gaudette

Director, Public Affairs and Marketing

renee.gaudette@yale.edu



Current Treatment Landscape of Advanced Papillary Renal Cancer.

Shuch B, Hahn AW, Agarwal N.

J Clin Oncol. 2017 Jul 24;JCO2017743328.

[Read More >>](#)

Regional variation in breast cancer surgery: Results from the National Cancer Database (NCDB).

Chiu AS, Thomas P, Killelea BK, Horowitz N, Chagpar AB, Lannin DR.

Am J Surg. 2017 Jul 18.

[Read More >>](#)

Trichodysplasia Spinulosa.

Rosenstein RK, Ko CJ, Colegio OR.

Transplantation. 2017 Jul 21

[Read More >>](#)

The receptor tyrosine kinase AXL promotes migration and invasion in colorectal cancer.

Uribe DJ, Mandell EK, Watson A, Martinez JD, Leighton JA, Ghosh S, Rothlin CV.

PLoS One. 2017 Jul 20;12(7):e0179979.

[Read More >>](#)

Standards for MRI reporting-the evolution to PI-RADS v 2.0.

Spektor M, Mathur M, Weinreb JC.

Transl Androl Urol. 2017 Jun;6(3):355-367

[Read More >>](#)

Editorial: Stopping Pancreatic Cyst Surveillance?

Farrell JJ.

Am J Gastroenterol. 2017 Jul;112(7):1162-1164.

[Read More >>](#)

Changes in diet quality in a randomized weight loss trial in breast cancer survivors: the lifestyle, exercise, and nutrition (LEAN) study.

Anderson C, Harrigan M, George SM, Ferrucci LM, Sanft T, Irwin ML, Cartmel B.

NPJ Breast Cancer. 2016 Aug 24;2:16026.

[Read More >>](#)

Modern approaches to the management of metastatic epidural spinal cord compression.

Husain ZA, Sahgal A, Chang EL, Maralani PJ, Kubicky CD, Redmond KJ, Fisher C, Laufer I, Lo SS.

CNS Oncol. 2017 Jul 18. doi: 10.2217/cns-2016-0044.

[Read More >>](#)