

May 1, 2015

Announcements

Pat LoRusso Named Translational Working Group Leader for Phase I



The momentum in the Phase I Team has continued to climb since Pat joined us last August, and I am pleased to announce that our senior leadership team has appointed her to the position of Translational Working Group (TWG) Leader for the Phase I group, effective today. In this role, she will continue to work with Paul Eder, Clinical Program Leader for Phase I, to collaborate and expand our Phase I research efforts throughout the 12

Clinical Programs at Smilow and in our Care Centers. I look forward to continued progress in this area, and thank Pat and Paul for their leadership.

New Assistant Directors Named for YCC

The Executive Committee of Yale Cancer Center has selected three new Assistant Directors to our leadership team to help achieve our CCSG goals and objectives, and to further our outreach efforts.

from the desk of

Thomas J. Lynch, Jr., MD

Director, Yale Cancer Center

Physician-in-Chief Smilow Cancer

Hospital at Yale-New Haven



SMILOW CANCER HOSPITAL
AT YALE-NEW HAVEN

Yale CANCER CENTER

A Comprehensive Cancer Center Designated
by the National Cancer Institute

Recent News

Read recent articles featuring experts from Yale Cancer Center [News Center >>](#)

LATEST ARTICLES:



Dr. Roy Herbst Joins Association of American Physicians

[Read More >>](#)



Anees Chagpar, MD, MPH, MBA, Director of the Breast Center at Smilow Cancer Hospital and Associate Professor of Surgery, has been named Assistant Director for Global Oncology. In her new role, Dr. Chagpar will inventory the current research and outreach occurring from Yale in oncology across the globe, and investigate new areas of concentrated research and/or partnerships Yale Cancer Center may

choose to focus on.



Beth Jones, PhD, MPH, Research Scientist and Lecturer in Epidemiology in the School of Public Health, has been named Assistant Director for Diversity and Health Equity. Dr. Jones will assist Yale Cancer Center in promoting diversity, eliminating disparities, and embracing health equity through research and education in our catchment area of Connecticut.



Andrea Silber, MD, Associate Clinical Professor of Medicine (Medical Oncology), has been named Assistant Clinical Director for Diversity and Health Equity. Dr. Silber will also assist Yale Cancer Center in promoting diversity, eliminating disparities, and embracing health equity. She will focus on engagement with community partners in improving education for prevention and screening and access to cancer care

for diverse populations within our local community as well as the greater New Haven area.

Two Outstanding Radiation Oncology Colleagues Retiring

After decades of dedicated patient care, research, and teaching in radiation oncology, both Yung Son and Richard Peschel have announced their retirements. Both Drs. Son and Peschel have had major impacts on the clinical, teaching, and research missions of Yale School of Medicine and YNHH. They have been extraordinary physicians, teachers, and colleagues. Please join me in wishing them well and thanking



Dr. Herbst on Nivolumab for NSCLC

[Read More >>](#)



Single mom of six battling second round of aggressive cancer

[Read More >>](#)

Join Yale Cancer Center on Facebook

Like us on Facebook

LATEST POSTS:

New study predicts the severity and timing of fatigue in cancer patients, allowing for better preemptive measures to be put in place to help patients through treatment and manage fatigue.

"Fatigue has been recognized as the number one symptom experienced universally by cancer patients," said Ruth McCorkle, Assistant Director for Psychosocial Oncology at Yale Cancer Center.

them for their outstanding dedication during their incredible careers here.



Yung Son received his MD in 1950 from Seoul National University in Korea. He trained in radiation oncology at the Princess Margaret Hospital in Toronto and subsequently joined the Yale faculty in 1962. He took a brief detour to the University of Virginia and then to the State University of New York from 1966 to 1973, returning to Yale in 1973. He was promoted to Professor of Therapeutic Radiology in 1982. Dr.

Son for many years provided radiation oncology services to the West Haven VA hospital, while developing specialty expertise in head and neck cancer. He established one of the most robust head and neck brachytherapy programs in the country, performing hundreds of brachytherapy treatments over the years. In conjunction with Dr. Clarence Sasaki in the Department of Surgery, Dr. Son established a unique combined surgery and brachytherapy program for the treatment of recurrent head and neck cancers. After 53 years as an attending physician in radiation oncology, Dr. Son will be retiring as of May 31

this year.



Richard Peschel came to medicine and radiation oncology after completing a PhD in nuclear physics at Yale in 1975. He received his MD from Yale in 1977 and was a resident in radiation oncology at YNHH from 1977-1980, after which he joined the Yale faculty. Dr. Peschel developed expertise in several areas. He was Director of the Section of Gynecologic Oncology in the Department of Therapeutic Radiology from 1983-

1990, and then turned his attention to prostate cancer and other urologic malignancies. He rapidly established international expertise in this area, authoring numerous textbooks and well over 100 papers that helped to define our current approaches to radiotherapy for prostate cancer. He also provided continuous leadership to the department, serving as medical director of the radiation oncology departments at Uncas-on-Thames Hospital in Norwich, Lawrence & Memorial Hospital in New London, and Bridgeport Hospital. He has played a major role in education at Yale, serving as Director of the Residency Program at YNHH from 1983-1991 and helped to train numerous leaders in the field, including three current department chairs at major centers. He was also Director of the L&M Community Cancer Center from 2003-2009. After 35 years as an attending physician in radiation oncology, Dr. Peschel retired yesterday.



[Read More >>](#)

Congratulations to Dr. Roy Herbst who was recently was elected to the Association of American Physicians (AAP), one of North America's oldest medical honor societies.

"It is an honor to be inducted into an organization that focuses on translational science and mentorship," said Dr. Herbst, Chief of Medical Oncology and Associate Director for Translational Research at Yale Cancer Center and Smilow Cancer Hospital. "I hope to further promote the values of the Association here at Yale."



[Read More >>](#)

Spring is upon us but be sure to protect yourself when out in the sun! Try these tips to keep your skin safe:

How do I protect myself from UV rays?

You don't have to avoid the sun completely, but there are steps you can take to protect your skin from UV rays.



Breast Cancer CME Dinner on May 7

Please join our faculty as they present the latest in the surgical and therapeutic treatment of breast cancer at the Yale Cancer Center/Smilow Cancer Hospital CME Symposium Dinner Series on Thursday, May 7 in Smilow. Registration is required.

[Learn More >>](#)

YCC New Member Happy Hour

Please join us to welcome YCC's newest members on Wednesday, May 27, 5:00-6:30 PM at the Boyer Center for Molecular Medicine (BCMM 206/208) for drinks and hors d'oeuvres on the patio. Please RSVP to [Christina Dreyfus](#) by Thursday, May 21st.

YCC Scientific Retreat

You are cordially invited to this year's YCC Annual Scientific Retreat on Wednesday, May 20th at Yale West Campus Conference Center. Breakfast begins at 9:30 AM with the formal program starting at 10:00 AM.

This year's keynote address will be given by Mark A. Lemmon, PhD, currently a Professor of Biochemistry and Biophysics at the Perelman School of Medicine at the University of Pennsylvania, and soon to be a leader of the Cancer Biology Institute at West Campus.

The afternoon session promises to build upon last year's excitement. Dr. Dan DiMaio will be announcing the establishment of a new YCC Research Award and will describe a major new YCC funding opportunity seeking transformative multidisciplinary cancer research projects.

It is essential that we have a firm count of attendees, so please RSVP to [Christina Dreyfus](#) by Friday, May 8th.

The Scientific Publication Program

The Scientific Publication Program is available to connect members of Yale Cancer Center with a qualified freelance editor who can improve publication and grant manuscripts. Whether your manuscript needs organizational clarity or grammatical assistance because English is your second language, an editor will work with you to make those important revisions. Open and free to all members of Yale Cancer Center, please contact Christina Dreyfus in the Office of Research Affairs at (203) 737-8375 to get started.

Notables

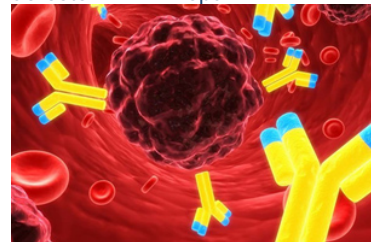
[Read More >>](#)

Exercise has been proven to help prevent cancer. Exercise has also shown the potential to help cancer patients fight back. If you are getting bored of your routine gym workout, bicycle riding is a great alternative! Not only will you enjoy the outdoors, but you will get ready for this year's Closer to Free Ride. The Closer to Free Ride is Smilow Cancer Hospital's annual fundraising event.



[Read More >>](#)

Researchers from Yale Cancer Center have devised a way to re-engineer lupus antibodies to turn them into potential cancer killers. Lupus is a chronic inflammatory disease that occurs when the immune system attacks its own organs, tissues, or joints. The team, led by Dr. James E. Hansen, assistant professor of therapeutic radiology, has shown that altering the antibodies to help them penetrate cancer cells and bind to DNA enables them to selectively kill tumors with defects in DNA repair.





[Read More >>](#)


Follow Yale Cancer Center on Twitter


Follow us on 


LATEST TWEETS:

 In the mood for lively conversation about cancer? Take a listen to our weekly radio show hosted by @AneesChagpar <http://bit.ly/1PbnSay>

 Drugs Show Promise for Some Advanced Lung Cancers

 Some #melanomas resist #immunotherapy. That's where #SU2C @MelanomaReAlli Dream Team comes in <https://youtu.be/BuJk9FHf2XE> #PrecisionMedicine

 Dr. Jennifer Kapo: #palliative care discussions should leave patients feeling more supported <https://youtu.be/U5E0WuE6kQY> @YNHH @OncLive

 MTwell worth the time to read Closer to a cure: A revolution is under way in cancer prevention and treatment <http://on.wsj.com/1disyzR> via @WSJ

The **Clinical Research Forum** awarded its top honor to Yale Cancer Center's **Dr. Roy Herbst** for a paper he co-authored on immune therapy for multiple types of cancer. The top prize, The Herbert Pardes Clinical Research Achievement Award, was awarded for a team-written paper published last November in the journal *Nature*. Dr. Herbst was first author of the paper that reported how the presence of PD-L1, an immune-suppressing protein in non-cancerous immune cells, may predict how patients will respond to treatment.

[Learn More >>](#)

Qin Yan, PhD, a member of the Cancer Genetics and Genomics Program, has been awarded another **NCI R21 grant** (\$398,352 total) to study the roles of epigenetic mechanisms of drug resistance. The title of the project is "Identifying epigenetic changes critical for trastuzumab resistance." The project will be done in collaboration with Drs. David Stern, Narendra Wajapeyee, Michael DiGiovanna, and David Rimm.

Nancy Carrasco, MD, Professor of Cellular and Molecular Physiology and a member of Yale Cancer Center's Cancer Genetics and Genomics Program, has been elected into the **National Academy of Sciences**, one of the highest honors bestowed upon scientists.

Dr. Roy Herbst recently was elected to the **Association of American Physicians** (AAP), one of North America's oldest medical honor societies. Dr. Vincent T. DeVita, Jr. nominated Dr. Herbst for membership. "Being elected to the AAP is a great honor richly deserved by Roy Herbst whose research with targeted therapy and immunotherapy of lung cancer has had a significant impact on the field of cancer treatment," Dr. DeVita said.

[Learn More >>](#)

Members of the **Smilow Hematology Program** are presenting at the **13th International Symposium on Myelodysplastic Syndromes** this weekend in Washington, DC, chaired by Steve Gore. Amer Zeidan will be recognized with a special abstract award, the **Tito Bastianello Young Investigator Award**, for his abstract entitled disease-specific costs of care and survival among medicare-enrolled patients with Myelodysplastic Syndromes (MDS). Our team's participation in the meeting includes:

Closer to Free

closer to free

The fund to advance cancer research and enhance patient care

Events

May 1; 12:00 PM
Research in Progress Meeting

Steve Gore:

- Oral Session Chair: Best of Abstracts:
- Plenary 1 Chair: Making the Quantum Jump in Clinical MDS Treatment
- Oral Session Chair: Best of Clinical Trials I: Abstracts

Stephanie Halene:

- Mutations in SRSF2 identified in Myelodysplasia Affect RNA
- Binding Affinity, specificity, and splicing humanized mice afford efficient engraftment and disease replication of Myelodysplastic Syndromes
- Plenary Session: Session 7 Chair: MDS and the Aging Stem Cell
- Oral Session Chair: MDS and the Aging Stem Cell: Abstracts

Manoj Pillai:

- Oral Session Chair: Biology of MDS Disease Progression

Thomas Prebet:

- Supportive care including chelation

R. Wang, A. Zeidan, P.R. Soulos, J.B. Yu, A.J. Davidoff, S.D. Gore, C.P. Gross, X. Ma:

- Subsequent Myelodysplastic Syndromes in prostate cancer patients after radiotherapy, a population-based study

Amer Zeidan:

- Disease-specific costs of care and survival among medicare enrolled patients with Myelodysplastic Syndromes (MDS)
- Subsequent Myelodysplastic Syndromes in prostate cancer patients after radiotherapy, a population-based study

Funding and Award Opportunities

NP-4-101A

Yu Zhang, MD and Noffar Bar, MD

[Read More >>](#)

May 3; 6:00 PM

Yale Cancer Center Answers
WNPR

Oncodermatology Clinic and Skin Cancer Prevention

Jennifer Choi, MD

[Read More >>](#)

May 5; 12:00 PM

Yale Cancer Center Grand Rounds

55 Park Street Auditorium

The Dense Breast and Supplemental Screening

Regina Hooley, MD

Mutations in SRSF2 Identified in Myelodysplasia affect RNA Binding Affinity, Specificity, and Splicing

Stephanie Halene, MD

[Read More >>](#)

May 6; 12:00 PM

Affinity Group Exposition

Harkness Ballroom

[Read More >>](#)

May 7; 12:00 PM

Yale Latino Network Group Faculty Talk

Hope, Room 103

Miguel Materin, MD

[Read More >>](#)

May 7; 12:30 PM

Pathology Grand Rounds

LMP 10

MiT Translocation Carcinomas of the Kidney

Pedram Argani, MD

[Read More >>](#)

May 12; 12:00 PM

Yale Cancer Center Grand Rounds

55 Park Street Auditorium

Clinical Pharmacology in the Era of Personalized Medicine

Jerry M. Collins, PhD

[Read More >>](#)

The Schwartz Center National Compassionate Caregiver of the Year Award

Nominate a professional caregiver or team for the 2015 Schwartz Center National Compassionate Caregiver of the Year (NCCY) Award, which recognizes healthcare providers who display extraordinary devotion and compassion in caring for patients and families. Professional caregivers who work in any U.S. healthcare setting are eligible for this prestigious award, which celebrates the importance of human connection, hope and compassion in healthcare.

Nominations Due: TODAY, May 1, 2015

[Learn More >>](#)

Alex's Lemonade Stand Foundation "A" Awards

Designed for early career scientists with an original project who can demonstrate outstanding mentorship and have a strong future commitment to pediatric cancer investigation. The grant is open to MD, MD/PhD and PhD investigators. Maximum of \$450,000 awarded over three years.

Application Deadline: May 22, 2015

[Learn More >>](#)

Yale-CORE Career Development Program in Patient-Centered Outcomes Research

The Yale-CORE Career Development Program in Patient-Centered Outcomes Research (Y-CORE PCOR) is an AHRQ-funded K12 program within the Yale-New Haven Hospital Center for Outcomes Research and Evaluation that is designed to train junior faculty and postdoctoral fellows in patient-centered outcomes research. Y-CORE PCOR will provide training and career development support for 2 scholars who have a clinical or research doctoral degree and are committed to a career in patient-centered outcomes research (PCOR) and comparative effectiveness research (CER).

Application Deadline: May 29, 2015

[Learn More >>](#)

Faculty Scholars Competition

The Simons Foundation, Howard Hughes Medical Institute (HHMI) and the Bill & Melinda Gates Foundation are pleased to announce the Faculty Scholars Competition, a national competition for grants to outstanding early-career scientists.

The three philanthropies will award a total of \$148 million over the program's first five years, awarding up to 70 grants every two and a half to three years. The awards are intended for basic researchers and physician scientists who have already demonstrated significant research accomplishments and

May 12; 5:00 PM
Breast Clinical Lecture Series

Smilow 1st Floor Conference Room

Immunotherapy for Breast Cancer

Lajos Pusztai, MD

[Read More >>](#)

Submissions

Please submit your recent publication and grant announcements to:

Renee Gaudette

Director, Public Affairs and Marketing

renee.gaudette@yale.edu

 Forward to a Friend

show potential to make unique and important contributions to their fields.

The Faculty Scholars Competition marks the first time that HHMI, the Bill & Melinda Gates Foundation and the Simons Foundation have formally undertaken an initiative together.

Application Deadline: July 28, 2015

[Learn More >>](#)

Recent Publications

Systematic approach to providing breast cancer survivors with survivorship care plans: a feasibility study.

Bulloch KJ, Irwin ML, Chagpar AB, Puzstai L, Killelea BK, Horowitz NR, Hofstatter EW, Abu-Khalaf MM, DiGiovanna M, Chung GG, Sanft TB. *J Oncol Pract.* 2015 Mar;11(2):e170-6.

[Read More >>](#)

Overall Survival and Long-Term Safety of Nivolumab (Anti-Programmed Death 1 Antibody, BMS-936558, ONO-4538) in Patients With Previously Treated Advanced Non-Small-Cell Lung Cancer.

Gettinger SN, Horn L, Gandhi L, Spigel DR, Antonia SJ, Rizvi NA, Powderly JD, Heist RS, Carvajal RD, Jackman DM, Sequist LV, Smith DC, Leming P, Carbone DP, Pinder-Schenck MC, Topalian SL, Hodi FS, Sosman JA, Sznol M, McDermott DF, Pardoll DM, Sankar V, Ahlers CM, Salvati M, Wigginton JM, Hellmann MD, Kollia GD, Gupta AK, Brahmer JR. *J Clin Oncol.* 2015 Apr 20.

[Read More >>](#)

Th17 cells transdifferentiate into regulatory T cells during resolution of inflammation.

Gagliani N, Vesely MC, Iseppon A, Brockmann L, Xu H, Palm NW, de Zoete MR, Licona-Limón P, Paiva RS, Ching T, Weaver C, Zi X, Pan X, Fan R, Garmire LX, Cotton MJ, Drier Y, Bernstein B, Geginat J, Stockinger B, Esplugues E, Huber S, Flavell RA. *Nature.* 2015 Apr 29. doi: 10.1038/nature14452.

[Read More >>](#)

Paraneoplastic Cholestasis Associated With Ovarian Dysgerminoma.

Yeh KE, Marcus PS, Fong TL. *Obstet Gynecol.* 2015 Apr 28.

[Read More >>](#)

Massively Parallel ("Next-Generation") DNA Sequencing.

Gould Rothberg BE, Rothberg JM. Clin Chem. 2015 Apr 28.

[Read More >>](#)

Regulation of Adipose Tissue Inflammation and Insulin Resistance by MAP Kinase Phosphatase 5.

Zhang Y, Nguyen T, Tang P, Kennedy NJ, Jiao H, Zhang M, Reynolds JM, Jaeschke A, Martin-Orozco N, Chung Y, He WM, Wang C, Jia W, Ge B, Davis RJ, Flavell RA, Dong C. J Biol Chem. 2015 Apr 28.

[Read More >>](#)

Mechanistic Assessment of PD-1H Coinhibitory Receptor-Induced T Cell Tolerance to Allogeneic Antigens.

Flies DB, Higuchi T, Chen L. J Immunol. 2015 Apr 27.

[Read More >>](#)

A behavioral smoking treatment based on perceived risks of quitting: A preliminary feasibility and acceptability study with female smokers.

Weinberger AH, Pittman B, Mazure CM, McKee SA. Addict Res Theory. 2015 Apr;23(2):108-114.

[Read More >>](#)

Use of neoadjuvant chemotherapy for patients with stage I to III breast cancer in the United States.

Mougalian SS, Soulos PR, Killelea BK, Lannin DR, Abu-Khalaf MM, DiGiovanna MP, Sanft TB, Pusztai L, Gross CP, Chagpar AB. Cancer. 2015 Apr 22.

[Read More >>](#)

The colibactin warhead crosslinks DNA.

Vizcaino MI, Crawford JM. Nat Chem. 2015 May;7(5):411-7.

[Read More >>](#)

Resection of oligometastatic lung cancer to the pancreas may yield a survival benefit in select patients - A systematic review.

DeLuzio MR, Moores C, Dhamija A, Wang Z, Cha C, Boffa DJ, Detterbeck FC, Kim AW. Pancreatology. 2015 Apr 3.

[Read More >>](#)

A nanotherapy strategy significantly enhances anticryptosporidial activity of an inhibitor of bifunctional thymidylate synthase-dihydrofolate reductase from Cryptosporidium.

Mukerjee A, Iyidogan P, Castellanos-Gonzalez A, Cisneros JA, Czyzyk D, Ranjan AP, Jorgensen WL, White AC Jr, Vishwanatha JK, Anderson KS. Bioorg Med Chem Lett. 2015 Apr 4.

[Read More >>](#)

Melanoma Treatments: Advances and Mechanisms.

Marzuka A, Huang L, Theodosakis N, Bosenberg M. J Cell Physiol. 2015 Apr 22.

[Read More >>](#)

A Novel Small-Molecule Inhibitor Targeting CREB-CBP Complex Possesses Anti-Cancer Effects along with Cell Cycle Regulation, Autophagy Suppression and Endoplasmic Reticulum Stress.

Lee JW, Park HS, Park SA, Ryu SH, Meng W, Jürgensmeier JM, Kurie JM, Hong WK, Boyer JL, Herbst RS, Koo JS. PLoS One. 2015 Apr 21;10(4):e0122628.

[Read More >>](#)