

October 2, 2015

Announcements

Joann Sweasy Named Associate Director for Basic Sciences

I am very pleased to announce that Joann B. Sweasy, PhD has accepted the position of Associate Director for Basic Sciences for Yale Cancer Center. In this role, Joann will be a member of our senior leadership team, and will help enhance the cancer research environment for scientists engaged in fundamental cancer research across Yale University. She will also lead the intramural grant program at YCC, including the pilot-awards and the ACS award.



Joann takes over the position from Dr. Daniel DiMaio, who will remain Deputy Director of Yale Cancer Center and will continue to oversee our scientific endeavors and provide support to Joann during her transition.

Joann is Professor and Vice Chair of Therapeutic Radiology at Yale University School of Medicine. She is also a Professor in the Department of Genetics at Yale and an Adjunct Professor of Microbiology and Molecular Genetics at the University of Vermont. She has held a Donaghue Investigator Award and a Junior Faculty Scholar Award from the American Cancer Society. Her work focuses on genomic instability, DNA repair, and cancer.

from the desk of

Peter G. Schulam, MD, PhD
Director, Yale Cancer Center
and Physician-in-Chief,
Smilow Cancer Hospital (Interim)

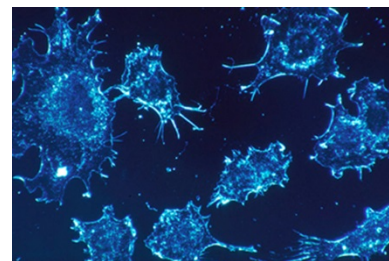


Recent News

Read recent articles featuring experts from Yale Cancer Center

[News Center >>](#)

LATEST ARTICLES:



Yale: cancer-screening guidelines may play role in decline in screening rates

[Read More >>](#)

Yale Cancer Center Board Meets

On Wednesday, the leadership of Yale Cancer Center and Smilow Cancer Hospital welcomed the members of Yale Cancer Center's Director's Advisory Board to the West Campus for our semi-annual meeting. It was a great opportunity to share the many accomplishments of our Center over the last several months, and to showcase some of our very best science, including presentations from Drs. Anees Chagpar, Harriet Kluger, Mark Lemmon, Alessandro Santin, and Preston Sprenkle.

Yale Cancer Center's new senior director of development, Julie Parr, was introduced to the group, and will be working with many of the members in the coming months to determine their individual interests and introduce them to specific areas of Yale Cancer Center and Smilow Cancer Hospital they may wish to support. Please contact [Julie](#) if you would like to learn more about the board or development opportunities.

Smilow Cancer Genetics and Prevention Program



Karina Brierley, Richard Lisitano, Erin Hofstatter, Rogerio Lilenbaum, Xavier Llor, and Allen Bale

On Monday, the Smilow Cancer Genetics and Prevention Program hosted its official ribbon cutting ceremony to celebrate the physical relocation of the program from 55 Church Street to their new home at 330 Orchard Street. The special event also marked the clinical redesign of the program, which is now physician-led, will take advantage of in-house testing, and boasts fully integrated cancer genetic counseling and risk assessment for patients.

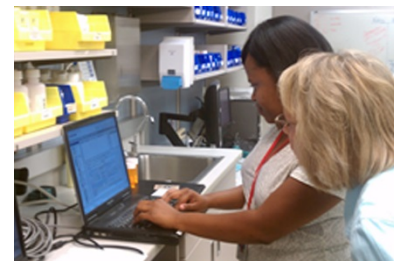
[Learn More >>](#)

Ruth McCorkle Oncology APP Award Nominations



Gene test predicts which breast cancer patients can skip chemo

[Read More >>](#)



Telepharmacy system to save Yale-New Haven Hospital time, money

[Read More >>](#)

Join Yale Cancer Center on Facebook

Like us on Facebook 

LATEST POSTS:

Most commercial sunblocks are good at preventing sunburn, but they can go below the skin's surface and enter the bloodstream. They therefore pose possible hormonal side effects and may even promote the skin cancers they seek to prevent.

We are pleased to accept nominations for the 4th annual **"Ruth McCorkle Oncology Advanced Practice Provider"** award. This annual recognition from Yale Cancer Center/Smilow Cancer Hospital will be presented at the Yale Cancer Center Conclave on Monday, November 23, 2015.

Please consider nominating yourself or a colleague for this award. It is a unique opportunity to recognize the contributions of our Nurse Practitioner and Physician Assistant colleagues who contribute so much to oncology patient care.

[Application >>](#)

[Learn More >>](#)

Notables

Congratulations to the following Yale Cancer Center employees who are recognized for their service anniversaries this year:

Beth Cadugan	5
Vicky Marler	5
Vanessa McBride	5
Kira Pavlik	5
Stephanie Sellers	5
Heather Lazowski	5
Maria Sandoval-Schaefer	5
Rina Castro	5
Alicia Alston	5
Debra Reynolds	5
Adam Roshka	10
Noelle Sowers	10
Julie Baker	10
Lin Zhang	10
Michelle Corso	10
Christine Marien	10
Judy Plotkin	10
Cynthia Gianpaolo-Ostravage	10
Eraina Baker	10



[Read More >>](#)

This painting is part of the "Oncology on Canvas" collection, which gives people living with cancer (and those who care for them) a way to tell their stories through creativity and bring comfort to others by sharing their cancer journeys



[Read More >>](#)

A year after Yale-New Haven Children's Hospital physicians removed a life-threatening brain tumor, Derby toddler Anthony Muoio returned to Yale-New Haven to pay it forward. Anthony, along side his mom, dad, and brother delivered "bags of hope" and gift cards to children facing their own tough times. The Muoios also delivered cookies and pumpkins to the nurses who cared for him last year.



[Read More >>](#)

Damaris Gonzalez	10
Kay Debski	15
Catherine Martone	15
James Platt	20
LaTricia Perkins	20
Donna Snedeker	30

Employee Profile: Althea Sewell

Althea Sewell, Clinical Apheresis Associate, greets patients coming into the Apheresis/Transfusion Service on the 8th floor of Smilow Cancer Hospital. She makes sure that patients are directed to the appropriate treatment area within the clinic, and that they are comfortable while they wait for the nurse.

Althea acts as the go-to person for patients. She handles administrative tasks such as triaging phone calls, ordering supplies and scheduling, but also interacts with patients, nurses, and physicians on a daily basis. The position of Clinical Apheresis Associate was created 8 years ago, and Althea was the first person hired. Previously, nurses were required to handle many of the administrative tasks, in addition to providing patient care. Althea makes it possible for the nursing staff to stay focused on the patients and do what they need to do.

"My goal every day is to make everyone happy, which is not always an easy task. If I can put a smile on the patients face, and the faces of their family members and the nurses, then I know I am doing my job," said Althea. "I try to make the patient and their family as comfortable as possible, and provide blankets, drinks and snacks if needed. Anything to make their visit to the clinic a little easier."


"Althea is a dedicated and hard-working employee. She consistently models the 'I am Yale-New Haven' behavior. During busy times in the unit, Althea pitches in to make a bed, escort a patient or visitor to a chair, offers a drink, or gets a wheelchair for the patient to decrease wait times. Althea's work ethic and personal conduct should be bottled and distributed among would be applicants," said Winsome Smith, RN, on the unit.


Funding and Award Opportunities


Follow Yale Cancer Center on Twitter


Follow us on  **twitter**


LATEST TWEETS:

 Thank you @WTNH and @jocelynmaminta for doing stories that matter <http://bit.ly/1FFpDOq> @YNHH

 A Veteran, a Survivor and Now a Father: Robert Dillon's Story | Yale Medical Group | Yale School of Medicine

 domain-b.com : Daily dose of aspirin beneficial in gastrointestinal cancer: study <https://shar.es/17zxDE> via @sharethis

 Carolyn Presley tells @OncLive #cancer patients spend at least 50 days a year dealing w/ healthcare system

 Pleiotropic analysis of cancer risk loci on esophageal adenocarcinoma risk. <http://ow.ly/StjQr> @YaleCancer

Closer to Free

closer to free

The fund to advance cancer research and enhance patient care

Events

Smoking Cessation within the Context of Lung Cancer Screening

The goal of this Funding Opportunity Announcement (FOA) is to improve the effectiveness and/or implementation of smoking cessation interventions delivered to current smokers who undergo low-dose computed tomography (LDCT) lung cancer screening. The proposed projects must be aimed at determining:

- a) the key components and characteristics of an effective smoking cessation intervention delivered in the LDCT setting; and/or
- b) characteristics of an implementation strategy to optimally incorporate existing evidence-based smoking cessation intervention(s) into the LDCT setting.

Application Deadline: October 8, 2015

[Learn More >>](#)

The National Cancer Institute (NCI) announces the reissuance of the Outstanding Investigator Award (R35)

The NCI is pleased to announce the reissuance of the Outstanding Investigator Award (OIA) funding opportunity announcement: [PAR-15-342](#). The OIA will support investigators with outstanding records of productivity in cancer research with \$600,000 in direct costs per year for 7 years to provide funding stability.

The OIA will allow funded investigators the freedom to embark on long-term projects of unusual potential in cancer research; the opportunity to take greater risks and be more adventurous in their lines of inquiry; and sufficient time to develop new techniques.

Applications must be submitted by Institutions who have nominated a Program Director/Principal Investigator (PD/PI) with outstanding productivity in cancer research as a recipient of NCI grant(s) for at least the last 5 consecutive calendar years. The PD/PI will be expected to commit at least 50% of his/her research activities to the OIA; the Institution will be expected to commit at least 20% salary support. Interested applicants should read the reissuance closely, since there are a few significant changes from the first issuance, including eligibility requirements and research strategy page length.

October 3; 7AM

Yale CME / Urology Symposium

Water's Edge Conference Center
Men's Health Symposium: Current Concepts and Controversies
Stanton Honig, MD

[Read More>>](#)

October 4; 6PM

Yale Cancer Center Answers

WNPR
New Therapies for Melanoma
Marcus Bosenberg, MD, PhD

[Read More>>](#)

October 5; 11:30AM

Special Presentation for Breast Cancer Awareness Month

55 Park Street Auditorium
Hug Your Customers
Jack Mitchell

[Learn More >>](#)

October 5; 12PM

YCC Epigenetics Interest Group Seminar Series

BCMM 206/208
Tracking Distinct RNA Populations Using Efficient and Reversible Covalent Chemistry

Erin Duffy, PhD
[Read More>>](#)

October 5; 1:30PM

Yale New Haven Health / Employee and Family Resources

NP4-101A
Strategies to Prevent Compassion Fatigue and Take Care of Self

[Read More>>](#)

October 6; 9:30AM

Pathology Research in Progress Series

TAC N-107
TBA

Application Deadline: October 23, 2015

[Learn More >>](#)

National Comprehensive Cancer Network® (NCCN®) /ImmunoGen Inc. Grants

National Comprehensive Cancer Network® (NCCN®) is pleased to announce that it has received a research grant from ImmunoGen Inc. to support NCCN investigator initiated pre-clinical studies of mirvetuximab soravtansine (previously known as IMGN853) in the treatment of solid tumors of special interest.

Application Deadline: October 26, 2015

[Learn More >>](#)

Melanoma Research Alliance Grants

The Melanoma Research Alliance (MRA) is pleased to announce a Request for Proposals (RFP) for high-impact translational research that has the potential to lead to near-term clinical application in melanoma prevention, detection, diagnosis, staging, and treatment. This cycle, proposals will be accepted for Team Science Awards, Young Investigator Awards, Academic-Industry Partnership Awards (for Established Investigators), and Special Opportunity Awards.

Letter of Intent Due: October 12, 2015

Proposals Due: November 16, 2015

[Learn More >>](#)

Women's Health Research at Yale Pilot Project Awards

All proposals must demonstrate innovative approaches to understanding women's health or sex differences, and describe a clear path to implementation for clinical or public health benefit. These awards offer up to \$35,000 (direct costs only) in funding for research designed to meet a clear need in advancing women's health.

Application Deadline: October 29, 2015

[Learn More >>](#)

Leslie H. Warner Postdoctoral Fellowships

Yale Cancer Center is pleased to announce the Leslie H. Warner Postdoctoral Fellowships to be awarded for one year commencing December 1, 2015, to fellows conducting cancer research with a Yale Cancer Center member. The Fellowships will support innovative basic, translational,

Denton Hoyer, PhD

[Read More>>](#)

October 6; 12PM

Yale Cancer Center Grand Rounds

Park Street Auditorium

Catalyzing Translational Innovation

Christopher P. Austin, MD

[Read More>>](#)

October 7; 12PM

YCC Member Services Orientation

Harkness Lounge

Member Services

[Read More>>](#)

October 7; 5PM

Yale New Haven Health / Employee and Family Resources

NP4-101A

Mindfulness Solutions

[Read More>>](#)

October 8; 9AM

Therapeutic Radiology Grand Rounds

NP4-101A

3-Dimensional Mammography and Use in Cancer Therapy Planning

Melissa Durand, MD

[Read More>>](#)

October 8; 12:30

Pathology Grand Rounds

Fitkin Amphitheater

Defining New pathways for Human Excitable Cell Disease

Peter Mohler, PhD

[Read More>>](#)

October 9; 5:30PM

Yale Stress Center 8-Week Course

2 Church St South

Mindfulness Based Stress Reduction

[Read More>>](#)

clinical, or population-based cancer research. Candidates who began postdoctoral studies on or after December 1, 2014 are eligible for this award. Up to four applications will be funded.

Application Deadline: October 29, 2015

[Learn More >>](#)

Brozman Foundation Ovarian Cancer Grants

To provide funding for a pilot project in ovarian cancer prevention and early detection, which would ultimately lead to national peer-reviewed grants.

Application Deadline: October 30, 2015

[Learn More >>](#)

Recent Publications

Fast Biological Modeling for Voxel-based Heavy Ion Treatment Planning Using the Mechanistic Repair-Misrepair-Fixation Model and Nuclear Fragment Spectra

Kamp, F, Cabal, G, Mairani, A, Parodi, K, Wilkens, J, Carlson, DJ.

Int J Rad Bio Phy Volume 93, Issue 3, 1 November 2015

[Learn More>>](#)

Characterization of DNA variants in the human kinome in breast cancer.

Agarwal D, Qi Y, Jiang T, Liu X, Shi W, Wali VB, Turk B, Ross JS, Fraser Symmans W, Pusztai L, Hatzis C.

Sci Rep. 2015 Sep 30;5:14736.

[Learn More>>](#)

EMMPRIN regulates tumor growth and metastasis by recruiting bone marrow-derived cells through paracrine signaling of SDF-1 and VEGF.

Chen Y, Gou X, Kong DK, Wang X, Wang J, Chen Z, Huang C, Zhou J.

Oncotarget. 2015 Sep 22.

[Learn More>>](#)

Romidepsin for the Treatment of Peripheral T-Cell Lymphoma.

October 11; 6PM

Yale Cancer Center Answers

WNPR

Breast Cancer Awareness Month 2015

Donald Lannin, MD

[Read More>>](#)

October 12; 1:30PM

Yale New Haven Health / Employee and Family Resources

NP4-101A

Strategies to Prevent Compassion Fatigue and Take Care of Self

[Read More>>](#)

October 13; 9AM

Colloquium on the Palliative Care of Muslims

West Campus/Yale School of Nursing Room 11706

Caring for Terminally Ill Muslim Patients: The Lived Experience of Non-Muslim Nurses

Gassan Abudari, RN

[Read More>>](#)

October 13; 9:30AM

Pathology Research in Progress

TAC N-107

TBA

Lan Shao, PhD and Mark Mooseker, PhD

[Read More>>](#)

October 13; 12PM

Yale Cancer Center Grand Rounds

Park Street Auditorium

Culture and Spiritually Sensitive Palliative Care of Muslims

Omar Shamieh, MD, MBA

Spiritually Sensitive Palliative Care of Cancer Patient from the Middle East

Mohammad Zafir Al-Shahri, MD

[Read More>>](#)

Barbarotta L, Hurley K.

J Adv Pract Oncol. 2015 Jan-Feb;6(1):22-36.

[Learn More>>](#)

Angiotensin-converting enzyme inhibitors decrease the risk of radiation pneumonitis after stereotactic body radiation therapy.

Harder EM, Park HS, Nath SK, Mancini BR, Decker RH.

Pract Radiat Oncol. 2015 Jul 17.

[Learn More>>](#)

Erratum to: A Phase 1 dose-escalation study of the safety and pharmacokinetics of once-daily oral foretinib, a multi-kinase inhibitor, in patients with solid tumors.

Shapiro GI, McCallum S, Adams LM, Sherman L, Weller S, Swann S, Keer H, Miles D, Müller T, Rabe DC, Cecchi F, Bottaro DP, LoRusso P.

Invest New Drugs. 2015 Sep 26.

[Learn More>>](#)

Integrating Palliative Care Into the Care of Patients With Advanced Lung Cancer.

Kapo JM, Akgün KM.

Cancer J. 2015 Sep-Oct;21(5):434-9.

[Learn More>>](#)

Management of Small Cell Lung Cancer: Progress and Updates.

Altan M, Chiang AC.

Cancer J. 2015 Sep-Oct;21(5):425-33.

[Learn More>>](#)

Lung Cancer Brain Metastases.

Goldberg SB, Contessa JN, Omay SB, Chiang V.

Cancer J. 2015 Sep-Oct;21(5):398-403.

[Learn More>>](#)

The Treatment of Advanced Lung Cancer in the Elderly: The Role of a Comprehensive Geriatric Assessment and Doublet Chemotherapy.

Presley C, Lilenbaum R.

Cancer J. 2015 Sep-Oct;21(5):392-7.

[Learn More>>](#)

October 13; 2:30PM

Colloquium on the Palliative Care of Muslims

Bishop Conference Room 1058CB

A Conversation on the Spiritual Care of Hospitalized Muslims with Life-Limiting Diseases

Gassan Abudari, RN, Mohammad Al-Shahri, MD and Omar Shamieh, MD

[Read More>>](#)

October 13; 5PM

YCC Breast Clinical Lecture Series

Smilow First Floor Conference Room, 1-330

[Read More>>](#)

October 14; 9AM

Colloquium on the Palliative Care of Muslims

SHM Library Room 101A

Palliative Care Principles in Islamic Context

Providing Spiritually Sensitive Palliative Care to Muslim Patients

Conversation over Lunch

Gassan Abudari, RN, Mohammad Al-Shahri, MD and Omar Shamieh, MD

[Read More>>](#)

October 14; 5PM

Yale New Haven Health / Employee and Family Resources Presents

NP4-101A

Mindfulness Solutions

[Read More>>](#)

October 15; 9AM

Therapeutic Radiology Grand Rounds

NP4-101A

ASTRO Oral Presentation Practice

Christopher Corso, MD, PhD, Nataniel Lester-Coll, MD, Henry Park, MD, MPH and Charles Rutter, MD

[Read More>>](#)

From the Guest Editors: Progress and Future Directions for the Treatment of Advanced LungCancer.

Goldberg SB, Herbst RS.

Cancer J. 2015 Sep-Oct;21(5):365.

[Learn More>>](#)

AID-associated DNA repair pathways regulate malignant transformation in a murine model of BCL6-driven diffuse large B cell lymphoma.

Gu X, Booth CJ, Liu Z, Strout MP.

Blood. 2015 Sep 18.

[Learn More>>](#)

Submissions

Please submit your recent publication and grant announcements to:

Renee Gaudette

Director, Public Affairs and Marketing

renee.gaudette@yale.edu

