

October 21, 2022

From Eric's Desk

If you are a Black woman living in the United States, you are twice as likely to die from breast cancer before the age of 50 compared to your White counterpart. Black women of all ages are 40% more likely to die of breast cancer than White women, and Black women actually have a lower incidence of the disease. The disparity in outcome seen in breast cancer is mirrored in virtually all other cancer types, and in individuals of all ages.

The causes of the disparities in outcome are unquestionably multifactorial, but the contribution of sociodemographic factors, unequal access to care, and the failure of our cancer care system to help every patient complete their treatment all play a major role. The differences in outcomes become even more tragic as our treatments become more and more effective. The present situation is entirely unacceptable. And disparities in cancer outcomes are not limited to differences in race and ethnicity. Poverty, limited education, lack of health insurance, sexual orientation, gender identity, living in a rural area, a history of mental health challenges, incarceration or a history of having been in prison, and a host of other factors place a patient at risk for a less than an optimal outcome when cancer is diagnosed.

My wife, Nancy Borstelmann, and I have launched a donor fund at Yale Cancer Center to help “Diminish Cancer Care Disparities.” Over the months and years ahead, I hope to encourage generous donors to add to this fund with the goal of making a difference for underserved patients in Connecticut. This new fund will support both research and clinical services, all with the goal of ultimately eliminating the differences in outcomes. As we approach external donors, it would be enormously helpful if we could tell our donors that the vast majority—if not 100% —of cancer center members contributed to the fund. With this objective in mind, I ask our cancer center members and friends to consider contributing to the fund, even if the contribution is nominal (e.g., \$10). In the weeks ahead, you will receive an email describing how you can make a gift.

It will be powerful for our external supporters to know that we are all behind this critical initiative, both in spirit and with our wallets. I truly believe that together we can have a major impact on disparities in the years ahead, but it will require a team commitment and tremendous effort.

Have a great fall weekend. Next blog – we welcome a guest writer.

Eric

Eric P. Winer, MD

Director, Yale Cancer Center

Physician-in-Chief, Smilow Cancer Network

Yale
NewHaven
Health
Smilow Cancer
Hospital

Yale CANCER CENTER
A Comprehensive Cancer Center Designated
by the National Cancer Institute

News Center



**Hair-Straightening Chemicals Linked With
Higher Risk For Uterine Cancer**



[Read More](#)

[Oncology Therapy at the End-of-Life:](#)

Announcements

Peter Glazer, MD, PhD, Elected to the National Academy of Medicine

Congratulations to Peter M. Glazer, MD, PhD, on his election to the prestigious National Academy of Medicine (NAM). By receiving one of medicine's highest honors, Dr. Glazer is among 100 new members who were selected for their outstanding contributions to medicine, joining 55 other faculty members from Yale who have been elected to the NAM, and 17 members of Yale Cancer Center.



Dr. Glazer is Chair and Robert E. Hunter Professor of Therapeutic Radiology and Professor of Genetics.

His research focuses on new strategies for treating cancer and the role of altered DNA repair in tumor progression. His work was recognized by the National Cancer Institute with a prestigious Outstanding Investigator Award that supports his efforts to exploit DNA repair for cancer therapy. Dr. Glazer's research has led to multiple new clinical trials for cancer at Yale and elsewhere, and he also leads the radiation oncology program at Smilow Cancer Hospital and the Smilow Cancer Network.

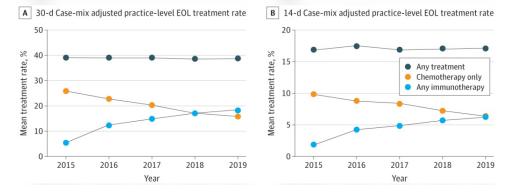
Gabriela Spilberg, MD joins Center for Gastrointestinal Cancers

Gabriela Spilberg, MD, has been named an Assistant Professor of Radiology and Biomedical Imaging and will care for patients as part of the Center for Gastrointestinal Cancers at Smilow Cancer Hospital and Yale Cancer Center beginning November 1. Dr. Spilberg has also been named Co-Director of Theranostics and Clinical Trials for the Section of Nuclear Medicine in the Department of Radiology and Biomedical Imaging Nuclear Medicine Section. She joins Yale from Hartford Hospital where she was Section Chief of Nuclear Medicine & Molecular Imaging and cares for patients with gastrointestinal malignancies with a focus on neuroendocrine tumors. Dr. Spilberg is the Connecticut Councilor for the New England Chapter of the Society of Nuclear Medicine and Molecular Imaging and a scientific reviewer for their annual meeting.



Dr. Spilberg received her medical degree from Universidade Federal do Rio de Janeiro in Brazil and completed her research fellowship at the University of Massachusetts in addition to a Neuroradiology fellowship. She then went on to complete fellowships in Interventional Radiology, Emergency

Have We Missed the Mark?



[Read More](#)

Experts Say There's a Greater Need for Access to Care Among Those with Dense Breast Tissue



[Read More](#)

Could Physical Activity Help Control Cancer?



[Read More](#)

Partnering With Patients Is Cornerstone, Says New ASCO President



Radiology and Cardiovascular Imaging, and PET/CT Cancer Imaging. She completed the Harvard Joint Program in Nuclear Medicine residency at Brigham and Women's Hospital and Harvard Medical School.

Upcoming CME Programs

Join Yale Cancer Center faculty for several upcoming CME programs this fall highlighting the latest advances in cancer research and care from Yale:

- **Smilow Shares with Primary Care on Lung Cancer**, Tuesday, November 1 at 5pm, Virtual
- **Immunotherapy and Novel Treatment for Head & Neck Cancers**, Wednesday, November 9 at 6:30pm, Virtual
- **Ella Grasso Gynecologic Oncology Conference**, Wednesday, November 16 at 8am, Virtual
- **Scientific Network on Female Sexual Health and Cancer 2022 Conference: Extending Our Reach: Broadening the Boundaries of Oncosexual Health**, Thursday and Friday, November 17-18, Greenberg Center

Notables

Suzanne Evans, MD, MPH, Professor of Therapeutic Radiology, has been elected a **Fellow of the American Society for Radiation Oncology (ASTRO)**, a prestigious award given to recognize outstanding members for their leadership role in radiation oncology and major service to ASTRO. Dr. Evans will be recognized at a ceremony during the **ASTRO annual meeting** on Tuesday, October 25 in San Antonio and will join numerous faculty, residents, and colleagues from Yale Cancer Center and Smilow Cancer Hospital presenting the latest research at the annual meeting. Over 25 presentations will be made from Yale from Saturday, October 22 to Wednesday, October 26. **Please review the full list of participation.**

Antonio Omuro, MD, Professor of Neurology and Chief of Neuro-Oncology, has been elected a **Fellow of the American Academy of Neurology (FAAN)**. Dr. Omuro's election as a FAAN is in recognition of valuable contributions to the Academy and to the neurology community at large. The designation is held at the highest standard of the Academy.

Roy S. Herbst, MD, PhD, Deputy Director for Clinical Affairs, Chief of Medical Oncology, and Ensign Professor of Medicine (Medical Oncology), was honored by the **Foundation for the National Institutes of Health** in Chicago last night at a commemorative dinner during **SWOG's** fall meeting in celebration of his **10 years of leadership and commitment** to the **Lung-MAP Trial**. In addition, during the meeting, Dr. Herbst will present during a plenary session today on "Lung-MAP Turns 10, Our Partnerships, Achievements, and Lessons Learned." **Kim Blenman, PhD, MS**, Assistant Professor of Medicine (Medical Oncology) and Computer Science, presented during an update as part of the Coltman Fellowship during a plenary session on "Image Analysis-Based TILs Measurement Predicts Breast Cancer pCR in SWOG S0800 Neoadjuvant Chemotherapy Trial."

Kelsey, Martin, MD, Assistant Professor of Clinical Medicine (Hematology), visited Capitol Hill earlier this week to meet with legislators and advocate for cancer research through the **American Society of Hematology Advocacy Leadership Institute**. Dr. Martin discussed increased funding and awareness for sickle cell research and patient care with legislators and their teams.



[Read More](#)

Black Women Are Still More Likely to Die of Breast Cancer Than White Women — Here's What Experts Want You to Know



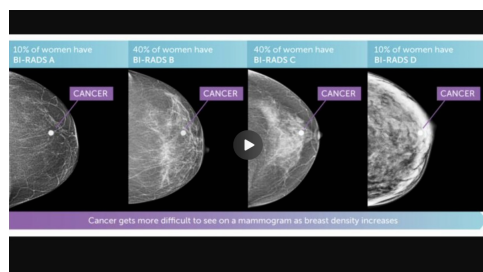
[Read More](#)

The Importance of HER2 Categorization for Metastatic Breast Cancer Treatment



[Read More](#)

VIDEO: What is the Impact of Breast Density Notification Laws?



[Watch Now](#)

Lung Cancer Screening Offers Hope to Those at Most Risk



George Goshua, MD, MSc, Assistant Professor of Medicine (Hematology), has been invited to serve as a voting member of the **Independent Appraisal Committee** for the **Institute for Clinical and Economic Review**, the leading Health Technology Assessment Agency in the U.S. Dr. Goshua will begin his term in January 2023.

Anne Chiang, MD, PhD, Associate Professor of Medicine (Medical Oncology) and Chief Integration Officer, has been selected as one of ten faculty members from Yale School of Medicine to attend the **AAMC Mid-Career Women Faculty Leadership Development Seminar** in California this December. The seminar is focused on networking, employing strategies for career and leadership development, and brainstorming ways to advance women in academic medicine and science.

Hyundai Hope on Wheels presented **Juan Vasquez, MD**, Assistant Professor Pediatric Hematology/ Oncology, with a \$300,000 **Scholar Hope Grant**, and **Vidya Puthenpura, MD, MHS, FAAP**, a Clinical Fellow, with a \$200,000 **Young Investigator Grant**. Dr. Vasquez is working to enhance the effect of immunotherapy to sensitize tumors to the treatment and Dr. Puthenpura is studying how a person's individual socioeconomic and psychological challenges can affect how they respond to chemotherapy.

Pamela Kunz, MD, Associate Professor of Medicine (Medical Oncology) and Director of the Center for Gastrointestinal Cancers, will attend **Atlantic Magazine's People vs. Cancer Summit** on November 3 in Tribeca. Dr. Kunz will participate in a session with Brian Alexander, MD, CEO of Foundation Medicine.

Annabella Sheweraga, a postgraduate research fellow in the Interventional Oncology (IO) Lab received a **Trainee Research Prize** from the **Radiological Society of North America** for her project, "MMP Inhibition Enhances CD8+ T Cell Immune Response in Post-Cryoablation Hepatocellular Carcinoma." Annabella also received the **Constantine Cope Award** earlier this year from the **Society of Interventional Radiology**. She is mentored by **Julius Chapiro, MD PhD**, Assistant Professor of Radiology and Biomedical Imaging and Co-Director of the IO lab.

Thiruvengadam Muniraj, MD, Associate Professor of Medicine (Digestive Diseases), has become associate editor of the journal **Gastrointestinal Endoscopy**, the official publication of the American Society for Gastrointestinal Endoscopy.

The annual **Yale Faculty Innovation Awards** are an opportunity to recognize the significant contributions of faculty investigators who launch startups to address global challenges. The discoveries from these investigators launch innovations from Yale into the world and these companies are poised to change the world. This year, 9 of the 12 Yale faculty recognized are Yale Cancer Center members and represent some of the 60 new ventures launched at Yale in recent years. This year's Yale Cancer Center award winners are:

- **Demetrios Braddock, MD, PhD**, Associate Professor (Pathology): Petragen
- **Ranjit Bindra, MD, PhD**, Harvey and Kate Cushing Professor of Therapeutic Radiology and Professor of Pathology; Scientific Director, Chênevert Family Brain Tumor Center at Smilow Cancer Hospital and Yale Cancer Center and **Guth Herman, PhD**, Milton Harris '89 PhD



[Read More](#)

Follow us!

facebook



YouTube

Instagram

LinkedIn

YALE CANCER ANSWERS

Last week, members of the Pediatric Hematology & Oncology Program at Smilow Cancer Hospital hosted a special celebration and reunion for pediatric patients who have had a bone marrow transplant and their families. The event was held at the Make-a-

Yale Cancer Center and **Seth Herzon, PhD**, Milton Harris '29 PhD Professor of Chemistry: Modifi

- **Ranjit Bindra, MD, PhD**, Harvey and Kate Cushing Professor of Therapeutic Radiology and Professor of Pathology; Scientific Director, Chênevert Family Brain Tumor Center at Smilow Cancer Hospital and Yale Cancer Center: Alphina Therapeutics
- **Sidi Chen, PhD**, Associate Professor (Genetics): Cellinfinity Bio
- **Craig Crews, PhD**, John C. Malone Professor of Molecular, Cellular, and Developmental Biology and Professor of Chemistry, of Pharmacology, and of Management: Siduma Therapeutics
- **Farren Isaacs, PhD**, Associate Professor of Molecular, Cellular and Developmental Biology: Pearl Bio
- **Akiko Iwasaki, PhD**, Sterling Professor of Immunobiology and Professor of Dermatology and of Molecular, Cellular, and Developmental Biology and of Epidemiology (Microbial Diseases); Investigator, Howard Hughes Medical Institute and Anna Marie Pyle, PhD, Sterling Professor of Molecular, Cellular, and Developmental Biology and Professor of Chemistry: RIGGIImmune
- **Aaron Ring, MD, PhD**, Assistant Professor of Immunobiology: Seranova Bio

The **Genetics, Genomics, and Epigenetics Research Program** welcomes **Allison Didychuk, PhD**, Assistant Professor of Molecular Biophysics and Biochemistry. Dr. Didychuk's research focuses on herpesviruses, ubiquitous human pathogens that include the gamma herpes viruses, Kaposi's sarcoma-associated herpesvirus (KSHV), and Epstein Barr virus (EBV). Dr. Didychuk's work centers on the idea that we need to understand the rest of the lytic viral machinery in mechanistic detail; particularly biomolecules that are unique to the virus and are thus attractive targets for inhibition to develop new therapeutics.



Community Research Fellowship Program

The Center for Community Engagement and Health Equity (CEHE) at Yale Cancer Center is recruiting host sites for the Community Research Fellowship Program for 2023. This program pairs diverse New Haven and Bridgeport community members with research teams to provide community consultation on cancer research projects. This is a wonderful opportunity to get connected to community outreach and engagement work at YCC and benefit your science. We hope to have representation from all YCC Research Programs.

Fellows dedicate approximately 5 hours a week as members of a YCC-affiliated research team. Hosting investigators and Fellows receive monthly training and support throughout the 9-month program (January – September 2023). Interested applicants must attend a short information session on 10/26 at 12pm or 11/3 5pm. If you would like to register for an information session or have initial questions, please contact Erin Singleton.

Connecticut Cancer Partnership

Please register to join the Connecticut Cancer Partnership (CCP) annual

Wish Foundation headquarters in Trumbull, CT.

Niketa Shah, MD, Associate Professor of Pediatrics (Hematology/Oncology) and Director of the Pediatric Cellular Therapy Program and Bone Marrow Transplant Program, helped to organize the event, and shared, "It was a wonderful day that allowed patients to come together, some that had received a transplant as a child, and now were attending as adults. It was an opportunity to see each other outside of the hospital and celebrate their accomplishments. Thank you to the Make-a-Wish Foundation for hosting us!"



[Read More](#)

Our #SmilowStar is Eileen Dehm, RN, BSN, who began her career at Yale New Haven Hospital in 2006. After 16 years, Eileen will retire on November 30. Eileen worked tirelessly during the height of the pandemic ensuring our patients received specialized oncology and hematology care during their admissions. Also during the pandemic, she worked closely with the former Supportive Care Unit, which offered full multidisciplinary palliative care support for patients and their families and identified patients throughout the entire hospital system who were pursuing comfort measures only. Eileen's experience and passion for cancer care will truly be missed.

Eileen is looking forward to spending more time with her family and friends but hopes to remain connected to Smilow and to all the wonderful friends and colleagues she has had the pleasure of getting to know and working with over the years.

Smilow Star!



meeting on November 15, 2022 at 10:00am. The meeting will launch the new cancer plan, celebrate the CCP's 20th-year anniversary, and feature a presentation by Dr. Aubrey Villalobos of the NCI Cancer Control Division who will describe how using evidence-based interventions can accomplish our goals.

Diversity, Equity, and Inclusion

Racial Gap in Cancer Mortality Prompts Yale Cancer Center to Hire More Navigators

In a recent interview on Connecticut Public Radio's *Where We Live*, Dr. Eric Winer shared his thoughts on cancer disparities, and how Yale Cancer Center and Smilow Cancer Hospital are working to address the issues: "We have care that is available across the state in 14 different locations. And that care will be highly sub-specialized care; the same care that's available at the main campus in New Haven. But building it isn't enough. And one part is helping people come in, so that's where navigation comes in. [A navigator is] somebody who's a knowledgeable friend, who's there with you all the time, and who helps make sure that the appointments get made and you have the support you need."

[Read More](#)

NCI Summit on Increasing Diversity, Equity and Inclusion in Early Phase Clinical Trials

The virtual summit on November 16 from 11:00am-4:00pm will feature representatives from government and industry and include input from across healthcare, the cancer community, and academia to focus on identifying and discussing the implementation of best practices for increasing diversity, equity and inclusion in NCI cancer clinical trials.

[Agenda](#)
[Register](#)

Perspectives of Women in Science Lecture

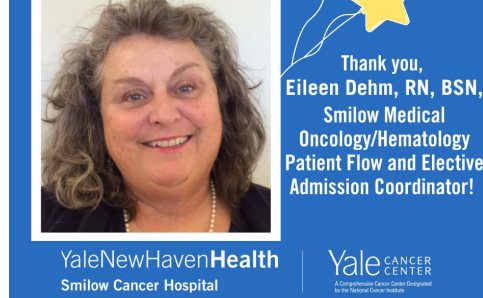
On November 9, 2022, at 4:00pm Valentina Greco, PhD, will present the fifth annual Perspectives of Women in Science Lecture in the Mary S. Harkness Auditorium on "Capturing Tissue Function and Dynamics by Live Imaging: The Power of Multiple Lenses." Dr. Greco is the Carolyn Walch Slayman Professor of Genetics, Professor of Cell Biology and of Dermatology, and a member of the Yale Stem Cell Center and Yale Cancer Center's Cancer Signaling Networks Research Program. Her research uses novel approaches to visualize and manipulate stem cells in live animals to address critical questions and make important discoveries about cellular homeostasis and regeneration, wound repair, and cancer. Dr. Greco has built her scientific achievements through being a competent and compassionate thought leader

who understands that inclusivity and mentorship within laboratories, departments, and institutions leads to groundbreaking advancements.

[Register](#)

Giving

Through a generous grant from the Frederick A. DeLuca Foundation, a New Graduate Fellowship Program for



[Read More](#)

Maryam Lustberg, MD, MPH, Director of the Center for Breast Cancer and Chief of Breast Medical Oncology, shares her thoughts on the advancement of therapies for patients with breast cancer, breast cancer screening, and multidisciplinary collaboration and expertise in this Q&A for Breast Cancer Awareness Month.

Breast Cancer Awareness Month

Maryam Lustberg, MD, MPH
Chief of Breast Medical Oncology

"Taking the best care of patients with breast cancer requires the wealth of knowledge and expertise from multiple disciplines and specialties including nursing, advance practice providers, surgery, radiation, physical therapy, occupational therapy, plastics, social work, cardiology, pulmonary, genetics - and the list goes on. We all bring knowledge from our respective specialties to develop the most comprehensive care plan."

YaleNewHavenHealth Smilow Cancer Hospital | Yale Cancer Center

[Read More](#)

"We're now able to better define the behavior of each patient's tumor, and their unique situation, to customize a unique treatment plan for each patient."

In honor of Breast Cancer Awareness Month, Dr. Jane Kanowitz, medical oncologist, talks about the advances in personalized treatment of breast cancer in this Q&A: <https://bit.ly/3LXfrWb>

Breast Cancer Awareness Month

Jane Kanowitz, MD
Assistant Professor of Clinical Medicine
(Medical Oncology)

"The advances in cancer medicine over the last quarter century, and breast cancer especially, are emerging at such a rapid rate that I find I am always functioning at the cutting edge. A lot of the therapies that I prescribe to my patients today were not treatment options 5 years ago. I am grateful that we're now better able to tailor treatment to each patient and her individual risk of relapse."

YaleNewHavenHealth Smilow Cancer Hospital | Yale Cancer Center

Graduate Fellowship Program for ambulatory oncology nursing and advanced practice at Smilow Cancer Hospital has been established.



This new program, managed by Kim Slusser, RN, MSN, Vice President Patient Services, will allow Smilow to successfully recruit, onboard, and retain at least 6 new graduate nurses and 3 advanced practice providers per year directly into the ambulatory cancer setting. Historically, new graduates have not been hired into the ambulatory settings and this new program will provide the support necessary to successfully transition new graduates into practice. The fellowships will provide dedicated time over a 9-month period for the new graduates to be exposed to cancer care in all settings, allowing development of the necessary competencies in cancer specific skills. There will also be a focus on mentorship and resiliency, which is critical for the retention of nurses and advanced practice providers working in the high stress environment of cancer care. The expectation is that new graduates will be drawn to the program due to the dedicated time devoted to their oncology-specific education and practice with critical focus on well-being and self-care.

We are extremely grateful to the Frederick A. DeLuca Foundation for their continued generosity and partnership with us in Smilow oncology nursing professional development and critical oncology nursing recruitment and retention efforts.

Employee Profile: Jen Watkins

Jen Watkins is a Director of Strategy and Planning for Smilow Cancer Hospital. Her work is currently focused on the Center for Breast Cancer, the Chênevert Family Brain Tumor Center, and our emerging Center for Spine Oncology. While each center is in a different place with their goals and projects, Jen loves that she can partner with clinical leaders and help each team advance their ideas down a path towards execution. Her job is different every day but can include helping one team who is spread across multiple sites break down

silos and see itself as a more cohesive unit, to helping another team conceptualize an innovative approach to care.

With each team, there is no shortage of great ideas, says Jen. “Everyone is constantly striving for improvement, and they are engaged and motivated to make things better for our patients.”

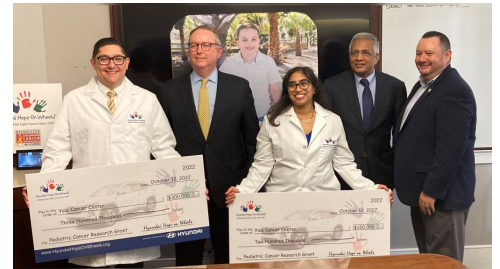
Jen joined Smilow Cancer Hospital a little more than seven months ago from Penn Medicine, where she held a similar role. Both Jen and her husband grew up in Connecticut, so they were thrilled to move back with their two daughters and be closer to family.



[Read More](#)

Two rising young stars of pediatric cancer research at Yale Cancer Center and Yale School of Medicine were awarded research grants from Hyundai Hope On Wheels to further their work of improving outcomes and treatment for children diagnosed with cancer.

Congratulations to Juan Vasquez, MD, Assistant Professor Pediatric Hematology/Oncology, on his \$300,000 Scholar Hope Grant, and Vidya Puthenpura, MD, MHS, FAAP, a Clinical Fellow, for her \$200,000 Young Investigator Grant!



[Read More](#)

“The research from our group in pathology has over the years helped to improve the diagnosis of liver tumors, identify clinically important sub-types, provide prognostic biomarkers, and understand cancer biology,” says Dhanpat Jain, MD, Professor of Pathology and of Internal Medicine (Digestive Diseases).

Dr. Jain talks more about the multidisciplinary nature of pathology, mentorship, and how “digitized” society is transforming his field in this Q&A for Liver Cancer Awareness Month, which you can read here: <https://bit.ly/3g4A3jG>.

Liver Cancer Awareness Month

“

The best approach to patient care is multi-disciplinary, and requires collaboration between hepatologists, radiologists, oncologists, surgeons, molecular pathologists, geneticists, and pathologists, amongst others.

Patients who are seen by the Liver Cancer Program at Smilow Cancer Hospital, have their pathology material routinely reviewed by our expert pathologists to ensure diagnostic accuracy and other required pathologic and molecular data. All our pathologists are sub-specialized and fellowship-trained and well-known experts in the field of liver cancer.



Dhanpat Jain, MD
Professor of Pathology and of Internal Medicine (Digestive Diseases)

“Jen has been an absolutely spectacular addition to our Smilow team,” says Kevin Vest, Vice President at Smilow Cancer Hospital. “Her wealth of experience at UPenn working with multidisciplinary teams and clinical program development positioned her to jump right into our efforts here at Smilow to bring disease-focused, research-driven, multidisciplinary care, close to home a reality for our patients across Connecticut.”

#OUTOFTHEBLUETHANKS to Michael Torres!

Yale Cancer Center and Smilow Cancer Hospital's #OUTOFTHEBLUETHANKS recently recognized Michael Torres, an IT Support Specialist at Yale Cancer Center. Mike has been professional, knowledgeable, and a great asset to our department for years but a recent situation highlighted his level of dedication to our team. When multiple new faculty and staff started in a building with a broken elevator recently, Mike trekked multiple pieces of equipment up more than 14 flights of stairs several times to make sure everyone was set up and ready to go. He made many trips back to the offices as questions or issues came up and didn't let the mechanical issue affect his level of service. Thank you, Mike!



*Yale Cancer Center & Smilow Cancer Hospital's #OUTOFTHEBLUETHANKS program is a staff recognition initiative to show appreciation to employees who have exemplified an above-and-beyond effort or an outstanding contribution to the team. If you are interested in submitting a nomination, please complete this **nomination form** and return it to the Director's Office c/o **Anna Raso**.*

Yale Cancer Center Annual Award Nominations

Yale Cancer Center Research Prizes: Research Prizes will be awarded in support of excellence in the areas of basic science, clinical science, translational science, and population science. Awards will be chosen in each area to recognize a paper that is considered to have had the greatest impact on the field this year. The nominee must be a current member of Yale Cancer Center and science in the publication must be cancer-focused. To be eligible, the nominee must also be either the first or last author of the publication. Please submit a PDF of the publication (publication date must be between October 2021 to October 2022) along with the category it should be considered for via email to **Anna Raso**.

Yale Cancer Center Award for Clinical Excellence: This award will be given to the physician who best exemplifies excellence in clinical care including super clinical skills, use of a patient- and family-centered approach to care, and inclusion of a multi-disciplinary care model. Nominee must be a **current member** of Yale Cancer Center. Please nominate outstanding

[Read More](#)

On Yale Cancer Answers, join us for discussion on global health and cancer care with the Director of the Yale Institute for Global Health, Dr. Saad Omer. Listen on Connecticut Public Radio or download our podcast from iTunes.



[Read More](#)

In partnership with Saint Francis Hospital, Smilow Cancer Hospital and Yale Cancer Center hosted the New England Hematologic Malignancies Symposium last month. The daylong event featured presentations from hematology experts from across the US, including Natalia Neparidze, MD, Francine Foss, MD, and Amer Zeidan, MBBS, MHS, who also co-chaired the symposium. The event was also livestreamed and was viewed by participants from 10 different countries.



candidates and send a brief nomination letter (one-page maximum) via email to **Anna Raso**.

Yale Cancer Center Award for Mentorship Excellence: This award will be given to the faculty member who best exemplifies excellence in mentorship by providing ongoing feedback and support, serving as a role model to their mentee(s), inspiring them in their passion for cancer care or for their specific field of study, providing opportunities and resources for mentee(s) to advance their careers, and encouraging their mentee(s) to grow, strive for excellence, and achieve their full potential. Nominee must be a **current member** of Yale Cancer Center. Please nominate outstanding candidates and send a brief nomination letter (one-page maximum) via email to **Anna Raso**.

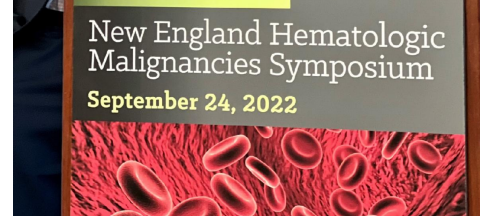
Yale Cancer Center Award for Teaching Excellence: This award will be given to the faculty member who best exemplifies excellence in teaching by ensuring their trainee(s) acquire the skills they need to develop as outstanding health practitioners, scientists, and/or researchers, providing ongoing feedback, inspiring passion for cancer care or for their specific field of study, explaining difficult concepts in innovative and creative ways, and stimulating excitement, debate, and critical and independent thinking. Nominee must be a **current member** of Yale Cancer Center. Please nominate outstanding candidates and send a brief nomination letter (one-page maximum) via email to **Anna Raso**.

Yale Cancer Center Award for Leadership in Diversity, Equity, and Inclusion: This award will be given to the cancer center member who best exemplifies leadership in advancing diversity, equity, and inclusion through support of diverse faculty and trainees, active programs to foster culture change, and serving as a role model of fairness and inclusivity. Nominee must be a **current member** of Yale Cancer Center. Please nominate outstanding candidates and send a brief nomination letter (one-page maximum) via email to **Anna Raso**.

Yale Cancer Center Lifetime Achievement Award: Yale Cancer Center recognizes the achievements of one of our senior members through our annual Lifetime Achievement award. Nominee must be a current member of Yale Cancer Center. Please send nomination suggestions for the award via email to **Anna Raso**.

Ruth McCorkle Oncology Advanced Practice Provider Award: This annual award from Yale Cancer Center/Smilow Cancer Hospital recognizes the contributions of our Nurse Practitioner and Physician Assistant colleagues who contribute so much to oncology patient care. Please consider nominating yourself or a colleague for this award. **Nominations** are due for the Ruth McCorkle Award to **Kim Slusser** by November 30, 2022.

Class of '61 Cancer Research Award: This annual Award recognizes significant accomplishments in cancer research at Yale University by a young member of the faculty, coupled with the expectation for future outstanding contributions to our understanding of the causes of cancer and to the development of novel cancer treatments. Established through the generosity of the Yale College Class of 1961, the Award provides unrestricted funds to support the winner's cancer research at Yale. Nominees must be an independent Yale faculty member aged 45 or less (on Dec 31, 2022), with accomplishments documented by published papers and awarded grants in any area of cancer research. Self-nominations are welcomed. Nominations



[Read More](#)

We welcomed more than 200 attendees to our annual Review of Advances in Oncology: Highlights from the ASCO® Annual Meeting 2022 on September 30 at Anthony's Ocean View. 32 of our faculty representing our cancer programs presented the latest information on cancer treatment and clinical trials. Thank you to Roy Herbst, MD, PhD, who hosted the program, and to Eric Winer, MD, for presenting the keynote address.



[Read More](#)

On #WorldMentalHealthDay, we acknowledge the struggles everyone faces, especially those of our patients. Our team of social workers are terrific and host support groups in-person, virtually, and by phone to stay in tune with patients and encourage conversation or just be there to listen. Our care teams also make sure to have a mental health check-in with patients throughout their cancer journey by using a helpful tool called a Distress Thermometer.

The thermometer is a quick, paper questionnaire developed by the National Comprehensive Cancer Network (NCCN) that the patient fills out, indicating their level

any area of cancer research. Your nominations are welcomed. Nominations must be received by 5:00pm on Friday November 11, 2022. Inquiries and nomination materials should please be sent to **Mark Lemmon**.

Recent Publications

Harrington KJ, Burtness B, Greil R, Soulieres D, Tahara M, Castro G, Psyrris A, Brana I, Baste N, Neupane P, Bratland A, Fueterer T, Hughes B, Mesia R, Ngamphaiboon N, Rordorf T, Ishak W, Lin J, Gumuscu B, Swaby R, Rischin D.

Pembrolizumab With or Without Chemotherapy in Recurrent or Metastatic Head and Neck Squamous Cell Carcinoma: Updated Results of the Phase III KEYNOTE-048 Study

Journal of Clinical Oncology, online ahead of print.

[Read More](#)

Kunz PL, Graham NT, Catalano PJ, Nimeiri HS, Fisher GA, Longacre TA, Suarez CJ, Martin BA, Yao JC, Kulke MH, Hendifar AE, Shanks JC, Shah MH, Zalupski MM, Schmulbach EL, Reidy-Lagunes DL, Strosberg JR, O'Dwyer PJ, Benson AB

A Randomized Study of Temozolomide or Temozolomide and Capecitabine in Patients with Advanced Pancreatic Neuroendocrine Tumors

(ECOG-ACRIN E2211) published online ahead of print, 2022 Oct 19. *J Clin Oncol.* 2022;101200JCO2201013.

[Read More](#)

Talcott, W, Chen K, Peters G, Reddy K, Weintraub S, Mougalian S, Adelson K, Evans S.

Self-Reported COVID-19 Infections and Social Mixing Behavior at Oncology Meetings

Science Direct, 114(1):30-38.

[Read More](#)

Nader M, Bonde P, Massaro S, Giuliano J, Shah N.

The Use of Extracorporeal Membrane Oxygenation as a Bridge to Bone Marrow Transplantation in a Patient with High-risk Acute Myeloid

Leukemia

Journal of Pediatric Hematology/ Oncology, online ahead of print.

[Read More](#)

Kuderer N, Desai A, Lustberg M, Lyman G.

Mitigating Acute Chemotherapy-Associated Adverse Events in Patients with Cancer

Nature, online ahead of print.

[Read More](#)

Herbst RS, Majem M, Barlesi F, Carcereny E, Chu Q, Monnet I, Sanchez-Hernandez A, Dakhil S, Camidge RD, Winzer L, Soo-Hoo Y, Cooper Z, Kumar R, Bothos J, Aggarwal C, Martinez-Marti A.

COAST: An Open-Label, Phase II, Multidrug Platform Study of Durvalumab Alone or in Combination With Oleclumab or Monalizumab in Patients With Unresectable, Stage III Non-Small-Cell Lung Cancer

that the patient has out, indicating their level of distress around several scenarios. It's not generally presented during every appointment – just periodically, and it's a great tool that allows members of the patient's care team to address concerns or questions on the spot, or make sure a social worker meets with the patient one-on-one before they head home.

The Distress Thermometer was recently updated by NCCN and is now available in more than 70 languages. It is used across all 14 of our Care Centers in addition to Smilow.



[Read More](#)



At #EOL, use of Systemic Anticancer Therapy, especially

#immunotherapy, increased, w/out improving outcomes, thus delaying #palliativecare & #hospice enrollment, while increasing acute care use & costs.



The phase 2 PIVOT-2 study led by Drs. Mario Sznoł & Michael Hurwitz

@SmilowCancer shows #BEMPEG plus nivolumab displayed anti-tumor activity as first-line treatment in patients with locally advanced/metastatic #urothelialcancer.



Dr. Saral Mehra @SmilowCancer presenting @YaleCancer Grand

Rounds on #headandneck cancers– “Quality of care research, when taken from bench to bedside, can have a remarkable impact on patient outcomes.”



Proud of the leadership of @FauziaRiaz @DDoroshov, 2

@YaleHemOnc graduates on a multicenter inpatient immunotherapy outcomes study at #ASCOQLTY22 with @ElizabethPrsic

Read More

Baldassarre LA, Ganatra S, Lopez-Mattei J, Yang EH, Zaha VG, Wong TC, Ayoub C, DeCara JM, Dent S, Deswal A, Ghosh AK, Henry M, Khemka A, Leja M, Rudski L, Villarraga HR, Liu JE, Barac A, Scherrer-Crosbie M; ACC Cardio-Oncology and the ACC Imaging Councils.

Advances in Multimodality Imaging in Cardio-Oncology: JACC State-of-the-Art Review

Science Direct, 80(16):1560-1578.

Read More

Canavan, M. E., Wang, X., Ascha, M. S., Miksad, R. A., Calip, G. S., Gross, C. P., & Adelson, K. B.

Systemic Anticancer Therapy at the End of Life-Changes in Usage Pattern in the Immunotherapy Era

JAMA Oncol. 2022;10.1001/jamaoncol.2022.4666.

Read More

Kaulen LD, Baehring JM.

Treatment Options for Recurrent Primary CNS Lymphoma

Springer Link, online ahead of print.

Read More

Wardill HR, Cheung YT, Boltong A, Charalambous A, Koczwara B, Lustberg M, Tomlins E, Britto JM.

'Share Your Views'-International Consultation Informs a Patient Engagement Strategy For The Multinational Association Of Supportive Care In Cancer

Springer Link, online ahead of print.

Read More

Lalonde CS, Teng Y, Burtness BA, Ferris RL, Ahmed R, Saba NF.

The Quest to Eradicate HPV-Related Oropharyngeal Carcinoma: An Opportunity Not to Miss

Journal of the National Cancer Institute, 114(10):1333-1337.

Read More

Kuderer NM, Desai A, Lustberg MB, Lyman GH.

Mitigating Acute Chemotherapy-Associated Adverse Events in Patients with Cancer

Nature Reviews Clinical Oncology, online ahead of print.

Read More

Loeser AL, Gao L, Bardia A, Burkard ME, Kalinsky KM, Peppercorn J, Rugo HS, Carlson M, Cowden J, Glenn L, Maues J, McGlown S, Ni A, Padron N, Lustberg M.

Patient-Centered Dosing: Oncologists' Perspectives About Treatment-Related Side Effects And Individualized Dosing For Patients With Metastatic Breast Cancer (MBC)

Springer Link, online ahead of print.

Read More

Conforti F, Pala L, Bagnardi V, De Pas T, Colleoni M, Buyse M, Hortobagyi G, Gianni L, Winer E, Loibl S, Cortes J, Piccart M, Wolff AC, Viale G, Gelber RD.

highlighting patient outcomes following inpatient ICI use.



Yale Cancer Center @YaleCancer-
Oct 19 At the 19th Biennial

Congress of the Metastasis Research Society, Nov. 13-16, Dr. Lajos Pusztai will share an update on a new clinical trial during "Metastasis biology-specific clinical trials."



Register to join us in person or virtually tomorrow evening,

Thursday, October 20 at 5:30pm in honor of #breastcancerawarenessmonth with @maryam_justberg @DrParisButler @GreenupRachel and @YaleBreast colleagues @SmilowCancer.



Milena Miszczuk @JuliusChapiro & colleagues share in CVIR_Journal

how 3D quantitative analysis of tumor burden is a strong predictor of survival in pts with #NET liver metastases who are undergoing intra-arterial therapies.



.@maryam_justberg comments on the importance of #HER2

categorization for metastatic #breastcancer treatment, "I see the beginning of having more options for essentially half of my patients with metastatic diseases."



.@Joseph_W_Kim & colleagues share the results from

@NCICancerTrials 9984: Randomized Trial of Olaparib With or Without Cediranib for Metastatic Castration-Resistant Prostate

Cancer #mCRPC in @JCO_ASCO @SmilowCancer



.@ValerieJHorsley explores the function of #adipocytes, including

how they may provide therapeutic avenues for #cancerin this study published in *Current Opinion in Genetics & Development*



Today at Noon, Dr. Saral Mehra, Chief of Head & Neck Surgery

@SmilowCancer, will present on Quality and Outcomes Research in #HeadandNeckCancer at #GrandRounds. Please join us in person or via Zoom.



"The better our treatment gets for #breastcancer, the more

Surrogacy of Pathologic Complete Response in Trials of Neoadjuvant Therapy for Early Breast Cancer: Critical Analysis of Strengths, Weaknesses, and Misinterpretations

JAMA Oncology, online ahead of print.

[Read More](#)

Shan NL, Kahn A, Puzstai L.

Intratour Heterogeneity, From Hypothesis to The Clinic

British Journal of Cancer, online ahead of print.

[Read More](#)

Kim JW, McKay RR, Radke MR, Zhao S, Taplin ME, Davis NB, Monk P, Appleman LJ, Lara PN Jr, Vaishampayan UN, Zhang J, Paul AK, Buble G, Van Allen EM, Unlu S, Huang Y, Loda M, Shapiro GI, Glazer PM, LoRusso PM, Ivy SP, Shyr Y, Swisher EM, Petrylak DP.

Randomized Trial of Olaparib With or Without Cediranib for Metastatic Castration-Resistant Prostate Cancer: The Results From National Cancer Institute 9984

Journal of Clinical Oncology, online ahead of print.

[Read More](#)

Miller JJ, Gonzalez Castro LN, McBrayer S, Weller M, Cloughesy T, Portnow J, Andronesi O, Barnholtz-Sloan JS, Baumert BG, Berger MS, Bi WL, Bindra R, Cahill DP, Chang SM, Costello JF, Horbinski C, Huang RY, Jenkins RB, Ligon KL, Mellinohoff IK, Nabors LB, Platten M, Reardon DA, Shi DD, Schiff D, Wick W, Yan H, von Deimling A, van den Bent M, Kaelin WG, Wen PY.

Isocitrate Dehydrogenase (IDH) Mutant Gliomas: A Society for Neuro-Oncology (SNO) Consensus Review on Diagnosis, Management, And Future Directions

Neuro-Oncology, online ahead of print.

[Read More](#)

Braman N, Prasanna P, Bera K, Alilou M, Khorrami M, Leo P, Etesami M, Vulchi M, Turk P, Gupta A, Jain P, Fu P, Pennell N, Velcheti V, Abraham J, Plecha D, Madabhushi A.

Novel Radiomic Measurements of Tumor-Associated Vasculature

Morphology on Clinical Imaging as a Biomarker of Treatment Response in Multiple Cancers

Clinical Cancer Research, 28(20):4410-4424.

[Read More](#)

Harrington KJ, Burtness B, Greil R, Soulières D, Tahara M, de Castro G Jr, Psyrris A, Brana I, Basté N, Neupane P, Bratland Å, Fuereder T, Hughes BGM, Mesia R, Ngamphaiboon N, Rordorf T, Wan Ishak WZ, Lin J, Gumuscu B, Swaby RF, Rischin D.

Pembrolizumab With or Without Chemotherapy in Recurrent or Metastatic Head and Neck Squamous Cell Carcinoma: Updated Results of the Phase III KEYNOTE-048 Study

Journal of Clinical Oncology, online ahead of print.

[Read More](#)

Gillison ML, Ferris RL, Harris J, Colevas AD, Mell LK, Kong C, Jordan RC, Moore KL, Truong MT, Kirsch C, Chakravarti A, Blakaj DM, Clump DA, Ohr JP, Deeken JF, Gensheimer MF, Saba NF, Dorth JA, Rosenthal DI, Leidner RS, Kimple RJ, Machtay M, Curran WJ Jr, Torres-Saavedra P, Le QT.

Safety Of Nivolumab Added to Chemoradiotherapy Platforms for

unacceptable it is that there are these big disparities. When you have diseases where there's curative therapy, it's just tragic if somebody can't get it."



Congratulations to Dr. Juan Vasquez @JcvasqV and Dr. Vidya Puthenpura @vid589, recipients on @hopeonwheels grants from @Hyundai to support their #pediatriccancer research.



New research from @maryam_lustberg & colleagues in @NatRevClinOncol shares how the burden of chemotherapy-associated adverse events (CAAEs) remains high and is associated with considerable morbidity, mortality and costs.

Calendar

Urology Grand Rounds

October 21; 7:30 AM

**Sterling Hall of Medicine, L-Wing -
Beaumont Room**

Surgical Management of Spine Tumors

Dr. Ehud Mendel

[Learn More](#)

Endocrinology Clinical Dilemma

October 21; 12:00 PM

BCMM 206/208

Carolina Gonzalez-Lopez

[Learn More](#)

Endocrine Grand Rounds

October 21; 1:00 PM

BCMM 206

Dr. John Wysolmerski

[Learn More](#)

Yale Medical Symphony Orchestra

Halloween Concert 2022

October 21; 7:30 PM

M.S. Harkness Memorial Auditorium

[Learn More](#)

Yale Cancer Answers: "Improvements in Breast Imaging"

October 23, 7:30 PM

Kiran Sheikh, MD

[Learn More](#)

Yale Cancer Center Grand Rounds/

Tullman Lectureship

Safety Of Nivolumab Added to Chemoradiotherapy Platforms for Intermediate and High-Risk Local-Regionally Advanced Head and Neck Squamous Cell Carcinoma: RTOG Foundation 3504

Science Direct, S0360-3016(22)03434-4.

[Read More](#)

Chan A, Elsayed A, Ng DQ, Ruddy K, Loprinzi C, Lustberg M.

A Global Survey on The Utilization of Cryotherapy and Compression Therapy for The Prevention of Chemotherapy-Induced Peripheral Neuropathy

Springer Link, online ahead of print.

[Read More](#)

Sternberg CN, Petrylak DP, Bellmunt J, Nishiyama H, Necchi A, Gurney H, Lee JL, van der Heijden MS, Rosenbaum E, Penel N, Pang ST, Li JR, García Del Muro X, Joly F, Pápai Z, Bao W, Ellinghaus P, Lu C, Sierecki M, Coppieters S, Nakajima K, Ishida TC, Quinn DI.

FORT-1: Phase II/III Study of Rogaratinib Versus Chemotherapy in Patients with Locally Advanced or Metastatic Urothelial Carcinoma Selected Based on FGFR1/ 3 mRNA Expression

Journal of Clinical Oncology, online ahead of print.

[Read More](#)

Kim JW, McKay RR, Radke MR, Zhao S, Taplin ME, Davis NB, Monk P, Appleman LJ, Lara PN Jr, Vaishampayan UN, Zhang J, Paul AK, Bublely G, Van Allen EM, Unlu S, Huang Y, Loda M, Shapiro GI, Glazer PM, LoRusso PM, Ivy SP, Shyr Y, Swisher EM, Petrylak DP.

Randomized Trial of Olaparib with or Without Cediranib for Metastatic Castration-Resistant Prostate Cancer: The Results from National Cancer Institute 9984

Journal of Clinical Oncology, online ahead of print.

[Read More](#)

Funding and Award Opportunities

Cancer Adoptive Cellular Therapy Network (Can-ACT) for Adult Cancers (UG3/UH3)

Through this FOA, the NCI intends to accelerate development, innovation and establishment of adoptive cellular therapy clinical trials for treatment of adult patients (18 years or older) with solid tumors. Specifically, UG3 phase of the awards will support preclinical, translational and IND-enabling studies that lay groundwork for UH3 early-stage clinical trials testing adoptive immune cell therapies in adult patients with solid tumors.

Application Deadline: October 28, 2022

[Read More](#)

Cancer Adoptive Cellular Therapy Network (Can-ACT) Coordinating Center (U24)

Through this FOA, the NCI intends to support a coordinating center to manage the Cancer Adoptive Cell Therapy (Can-ACT) Network a network of UG3/UH3 awardees that will conduct adoptive cell therapy research and clinical trials for patients with solid tumors.

Application Deadline: October 28, 2022

Tummar Lectureship

October 25; 12:00 PM

55 Park Street; Auditorium

Breast Cancer, Moving Ever Closer to Cure for All

Lajos Pusztai, MD, DPhil

[Learn More](#)

Yale Cell Biology Seminar Series

October 25; 1:00 PM

The Anlyan Center - TAC N107

Cell Biology in Different Contexts

Yixian Zheng, PhD

[Learn More](#)

Human and Translational Immunology Seminar Series

October 25; 4:00 PM

The Anlyan Center - Auditorium N107

Impact of HSV on Antibody Responses and T Cell Phenotypes: Implications for Vaccine Development and HIV Reactivation

Betsy Herold, MD

[Learn More](#)

Global Immunotalks 2022

October 26; 12:00 PM

Anne O'Garra

[Learn More](#)

Yale PCCSM Grand Rounds

October 26; 3:00 PM

Oxygen Therapy in Pulmonary Medicine

Peter Kahn, MD, MPH, ThM

[Learn More](#)

Yale Cancer Center Seminar

October 26; 5:00 PM

Winchester Building - WWW208 Conf. Rm.

Determining the Risk of Thrombosis in Double Heterozygous Carriers of Factor V Leiden and Prothrombin G20210A Mutation Using Large-Scale Genomics

Justine Ryu, MD

[Learn More](#)

Immunobiology Seminar Series

October 27; 10:30 AM

The Anlyan Center - Auditorium, N-107

Extreme Metabolism: Measuring Metabolic Flux in Immune Cells and Tumors in Vivo

Caroline Bartman, PhD

[Learn More](#)

Pathology Grand Rounds

October 27; 12:30 PM

[Read More](#)

YSM Science Fellows

The Yale School of Medicine (YSM) seeks applications for the first class of YSM Science Fellows, through which we will recruit exceptional trainees from diverse backgrounds in the basic, translational, and/or clinical fields each year for the next five years. We specifically seek outstanding recent PhD graduates who — through their research, outreach, mentoring, teaching, and leadership — have a record of excellence in their field and high future potential.

Application Deadline: November 1, 2022

[Read More](#)

Michael F. Price Memorial Grant Award for Gastroesophageal Cancer

The DeGregorio Family for Gastric and Esophageal Cancer (Gastroesophageal Cancer) is pleased to announce its 13th annual funding opportunity for gastroesophageal malignancies in honor of Michael F. Price. The Foundation seeks to promote and facilitate collaborative research on the pathogenesis, early diagnosis and treatment of upper gastrointestinal malignancies.

Application Deadline: November 1, 2022

[Read More](#)

EIAP Scholars Award

The Early Investigator Advancement Program (EIAP) facilitates the advancement of scientists from diverse backgrounds and is now accepting applications for its second cohort of EIAP Scholars. One critical juncture is the transition from junior investigator to independent investigator. Each year, EIAP supports the professional and career development of a cohort of eligible and qualified Early Stage Investigators and New Investigators from institutions across the country.

Application Deadline: November 1, 2022

[Read More](#)

Current NCI SBIR Contract Solicitation

Are you working on innovative technologies that aim to prevent, diagnose, or treat cancer? The NCI SBIR Development Center can provide funding through the FY2023 NCI SBIR Contract Solicitation to assist your efforts to commercialize cancer technology projects. Please direct questions to Cherie Wells, the Contract Analyst for the Office of Acquisitions, at ncioasbir@mail.nih.gov.

Application Deadline: November 4, 2022

[Read More](#)

The Pershing Square Sohn Prize for Young Investigators in Cancer Research

The Pershing Square Sohn Prize for Young Investigators in Cancer Research provides early career, New York area scientists the freedom to take risks and pursue their boldest research at a stage when traditional funding is lacking. Prize winners each receive \$200,000 a year for up to three years. At least six grants are awarded annually.

LOI Due: November 7, 2022

[Read More](#)

Program for the Promotion of Interdisciplinary Team Science (POINTS)

The YSM Office of Team Science will support teams of investigators to

[Fitkin Memorial Pavilion Auditorium](#)

Integration and Analysis of High-Dimensional Clinical and 'Omic Data

Dr. Lanjing Zhang, MD, MS

[Learn More](#)

Cancer Genetics and Prevention Program Seminar

October 27; 2:30 PM

[Learn More](#)

Center for GI Cancers Seminar Series 2022-2023

October 27; 4:15 PM

[Learn More](#)

OncLive State of the Science Summit

October 27; 6:00 PM

Ovarian Cancer

Gary Altwerger, MD | Elena Ratner, MD, MBA | Vaagn Andikyan, MD | Gary Altwerger, MD

[Learn More](#)

Smilow Shares Advances in Breast Cancer

October 27; 7:00 PM

Melanie Lynch, MD | Kathleen Fenn, MD | Neal Fischbach, MD | Kevin Du, MD, PhD, MSCI | Monica Valero, MD

[Learn More](#)

Digestive Diseases Pathophysiology

Seminar

October 28; 1:00 PM

Xavier Llor, MD, PhD

[Learn More](#)

Breast Center Educational Day

October 29; 8:00 AM

Greenwich Hospital

Breast Cancer Challenges: Fertility, Menopause and Sexuality

Barbara Ward, MD | Mariya Rozenblit, MD | Ann Partridge, MD | Deepika Garg, MD | Mary Jane Minkin, MD | Liz O'Riordan, MD

[Learn More](#)

Yale Cancer Center Seminar

October 31; 5:00 PM

Winchester Building - WWW208 Conf. Rm
Acute Myeloid Leukemia: Moving Towards a Cure?

Eunice Wang, MD

[Learn More](#)

address major questions in basic, clinical, and translational science and partner with them on grant submissions to obtain federal funding for sustainable support for these projects. To nucleate new projects, we will provide \$50,000 to \$200,000 to groups of two to five investigators, led by a YSM faculty member, in support of research projects having the potential to achieve program project or center funding (i.e., U01, U54, P01, P30, P50, comparable large grants from other federal and non-federal agencies).

Application Deadline: November 7, 2022

[Read More](#)

Pershing Square Sohn Prize for Young Investigators in Cancer Research

The Pershing Square Sohn Prize for Young Investigators in Cancer Research provides greater New York City area-based early career scientists the freedom to take risks and pursue their boldest research at a stage when traditional funding is lacking. Prize winners each receive \$200,000 a year for three years, totaling \$600,000. At least six prizes are awarded annually.

Application Deadline: November 7, 2022

[Read More](#)

Global Implementation Science for Equitable Cancer Control (GlobalISE Cancer Control, U54)

The purpose of this FOA is to build implementation science centers in low- and middle-income countries (LMICs). This initiative will support implementation science research capacity-building activities, including research projects that identify, develop, and test innovative theory-based strategies for overcoming barriers to the adoption, adaptation, integration, scale-up, and sustainability of evidence-based cancer control interventions in LMICs.

Application Deadline: November 8, 2022

[Read More](#)

NCI Cancer Moonshot Scholars Diversity Program (CMSDP) (R01)

The overarching goal of the CMSDP is to increase the number of R01 Early-Stage Investigators and enhance the diversity of the cancer research workforce, while promoting scientific advancements in cancer. Investigators from diverse backgrounds, including those from underrepresented groups are encouraged to work with their institutions to apply.

Application Deadline: November 8, 2022

[Read More](#)

Lion Heart Fund For Cancer Research

Yale investigators are encouraged to submit proposals of innovative, high-potential projects requiring pilot funding. Projects may be in any area of breast cancer research – basic, translational, clinical, outcomes and population science are all welcomed from any discipline or group of disciplines.

Application Deadline: November 8, 2022

[Read More](#)

AACR-QuadW Foundation Sarcoma Research Fellowship

This fellowship represents a joint effort to encourage and support a postdoctoral or clinical research fellow to conduct translational or clinical sarcoma research and to establish a successful career path in this field.

Application Deadline: November 8, 2022

[Read More](#)

Smilow Shares with Primary Care on Lung Cancer

November 1; 5:00 PM

Steven Benaderet | Michael Cohenuram, MD | Sarah Goldberg, MD, MPH | Vincent Mase Jr, MD, BS | Daniel Rudolph, MD

[Learn More](#)

Lung Cancer Awareness Month

November 2; 5:30 PM

55 Park Street - Auditorium

Daniel Boffa, MD | Sarah Goldberg, MD | Lynn Tanoue, MD, MBA | Vincent Mase Jr, MD, BS | So Yeon Kim, MD | Thomas Hayman, MD, PhD | Gavitt Woodard, MD | Justin D. Blasberg, MD, MPH, FACS | Scott Gettinger, MD | Frederick Wilson, MD, PhD | Veda Giri, MD | Halley Robinson, LCSW | Sanja Dacic, MD, PhD | Jennifer Possick, MD | Anna Bader, MD, MS

[Learn More](#)

2022-2023 Microbiology Graduate Seminar Series

November 3; 3:30 PM

Hope Memorial Building - 216

Dr. Nikhil Malvankar

[Learn More](#)

The 10th Annual RNA Center Retreat

November 4; 8:00 AM

Auditorium Marsh Hall - Auditorium

Salil Garg, MD, PhD | Wendy V. Gilbert, PhD | Antonio Giraldez, PhD | Fergus F. Wallace |

Farren Isaacs, PhD | Diane Krause, MD, PhD | Haifan Lin, PhD | Sigrid Nachtergaele | Zachary Smith, PhD | Paul Turner, PhD | Susan Baserga, MD, PhD

[Learn More](#)



Share your news!

Please submit your recent publications, awards, and grant announcements to:

[Renee Gaudette](#)

Director, Public Affairs and Communications

[Read More](#)

ACS - Institutional Research Grant Pilot Awards for Under Represented Minorities (Junior Investigators)

The purpose of this grant is to provide pilot research funds for an Assistant Professor who identifies as underrepresented in health-related sciences, namely, as African American or Black, American Indian and Alaskan Native, Hispanic/Latinx, or Native Hawaiian or other Pacific Islander.

Letters of Intent Due: November 14, 2022

[Read More](#)

Technology Impact Award

The Cancer Research Institute Technology Impact Award provides seed funding of up to \$200,000 to be used over 12-24 months to address the gap between technology development and clinical application of cancer immunotherapies. These grants aim to encourage collaboration between technology developers and clinical cancer immunologists and to generate the proof-of-principle of a novel platform technology in bioinformatics, ex vivo or in silico modeling systems, immunological or tumor profiling instrumentation, methods, reagents and assays, or other relevant technologies that can enable clinician scientists to generate deeper insights into the mechanisms of action of effective or ineffective cancer immunotherapies.

LOI Due: November 15, 2022

[Read More](#)

Multi-Omics for Health and Disease Awards

The goal of these FOAs is to establish Disease Study Sites that will be part of a collaborative initiative to advance the application of multi-omic technologies to study health and disease in ancestrally diverse populations.

- **Multi-Omics for Health and Disease - Disease Study Sites (U01)**
- **Multi-Omics for Health and Disease - Omics Production Centers (U01)**
- **Multi-Omics for Health and Disease - Data Analysis and Coordination Center (U01)**

Application Deadlines: November 18, 2022

NCI Pathway to Independence Award for Outstanding Early Stage Postdoctoral Researchers (K99/R00)

The purpose of this award is to increase and maintain a strong cohort of new and talented, NCI-supported, independent investigators. This program is designed for postdoctoral fellows with research and/or clinical doctoral degrees who do not require an extended period of mentored research career development beyond their doctoral degrees. The objective of this award is to facilitate a timely transition of these fellows from their mentored, postdoctoral research positions to independent, tenure-track or equivalent faculty positions.

Application Deadline: November 29, 2022

[Read More](#)

Clinical Sites for HIV/Cervical Cancer Prevention 'CASCADE' Clinical Trials Network (UG1)

The 'CASCADE' Network will conduct pragmatic clinical trials evaluating the effectiveness of clinically proven interventions to overcome barriers and reduce failures in the cervical cancer screening, management, and precancer treatment cascade for women living with HIV.

Letter of Intent Due: November 28, 2022

[Read More](#)

AACR Clinical Oncology Research (CORE) Training Fellowships

This fellowship is designed for early-career clinical scientists who hold a medical degree (MD, DO, or MD/PhD) and are interested in acquiring the knowledge and skills related to drug development from the perspective of the pharmaceutical industry. The fellow will gain real-world experience in drug development, including clinical research, clinical trial design, and data analysis.

Application Deadline: November 30, 2022

Read More

Breast Surgery Fellowships

The term of the Breast Surgical Fellowship is one year with a grant award of \$75,000, from August 1 through July 31. Institutions making application for the 2023 award must have an established breast fellowship program, be SSO accredited for a minimum of two years, and be located in New York, New Jersey or Connecticut.

Application Deadline: December 1, 2022

Read More

BCA Education and Outreach Grants

Breast Cancer Alliance offers grants to support programs directly related to outreach and case managerial breast cancer services, including education, counseling, biopsies and mammograms for the underserved. The programs must be located in Connecticut and/or in Westchester County, New York.

Application Deadline: December 9, 2022

Read More

AHEAD (Advancing Head and Neck Cancer Early Detection Research) (U01)

The purpose of this FOA is to accelerate translation of research to improve early detection of head and neck cancers (HNC). This FOA seeks applications that focus on early detection of HNC by applying molecular, cellular, and multi-omics signatures to clinical studies for differentiating benign from premalignant lesions, and identifying prognostic signatures on the transformation from premalignant to malignant lesions.

Letter of Intent Due: December 11, 2022

Read More

Alex's Lemonade Stand Foundation 2023 Young Investigator Grant

The Young Investigator grant is a three-year award designed to support early career researchers, such as postdoctoral fellows, clinical fellows or instructors, pursuing promising childhood cancer research ideas. These grants aim to cultivate the best and brightest researchers of the future who demonstrate a commitment to a research career in pediatric cancer. A mentor is required, and a career development plan must be included. The Young Investigator grant offers up to \$50,000 in direct costs per year for three years.

Application Deadline: December 12, 2022

Read More

NCI Intramural Continuing Umbrella of Research Experiences (iCURE)

This program supports mentored research experiences for qualified students and scientists from diverse backgrounds in the multidisciplinary research environment of the NCI campuses in Bethesda, Rockville, and Frederick.

Maryland.

Application Deadline: December 15, 2022

Read More

NCI Cancer Moonshot Scholars Diversity Program (CMSDP) (R01)

This Funding Opportunity Announcement (FOA) supports the Cancer Moonshot Scholars Diversity Program (CMSDP) and solicits R01 grant applications that propose independent research projects within the scientific mission of the National Cancer Institute (NCI). The overarching goal of the CMSDP is to increase the number of R01 Early Stage Investigators (ESIs) and enhance the diversity of the cancer research workforce, while promoting scientific advancements in cancer. Investigators from diverse backgrounds, including those from underrepresented groups are encouraged to work with their institutions to apply.

Application Deadline: February 6, 2024

Read More

Yale Cancer Center | 333 Cedar Street, New Haven, CT 06520

[Unsubscribe renee.gaudette@yale.edu](#)

[Update Profile](#) | [Constant Contact Data Notice](#)

Sent by renee.gaudette@yale.edu powered by



Try email marketing for free today!